



UK Office

Everest Biotech Ltd

Cherwell Innovation Centre
77 Heyford Park
Upper Heyford
Oxfordshire
OX25 5HD
UK

Enquiries:

info@everestbiotech.com

Sales:

sales@everestbiotech.com

Tech support:

support@everestbiotech.com

Tel: +44 (0)1869 238326

Fax: +44 (0)1869 238327

US Office

Everest Biotech c/o Abcore

405 Maple Street, Suite A106
Ramona,
CA 92065
USA

Inquiries:

info@everestbiotech.com

Sales:

usasales@everestbiotech.com

Tech support:

support@everestbiotech.com

Tel: 888-320-4628 (toll-free)

Fax: 888-841-9041

www.everestbiotech.com

**Research Use Only. Not for
diagnostic or therapeutic use.**

EB10335 - Goat Anti-HOXC8 Antibody

Size: 100µg specific antibody in 200µl



Target Protein

Principal Names: homeo box 3A, homeo box C8, homeobox C8, homeobox protein Hox-C8, HOX3, Hox-3.1, mouse, homolog of, HOX3A, HOXC8

Official Symbol: HOXC8

Accession Number(s): NP_073149.1

Human GeneID(s): [3224](#)

Non-Human GeneID(s): 15426 (mouse)

Immunogen

Peptide with sequence C-SLYGAQQEAS, from the internal region of the protein sequence according to NP_073149.1.

Please note the [peptide](#) is available for sale.

Purification and Storage

Purified from goat serum by ammonium sulphate precipitation followed by antigen affinity chromatography using the immunizing peptide.

Supplied at 0.5 mg/ml in Tris saline, 0.02% sodium azide, pH7.3 with 0.5% bovine serum albumin.

Aliquot and store at -20°C. Minimize freezing and thawing.

Applications Tested

Peptide ELISA: antibody detection limit dilution 1:2000.

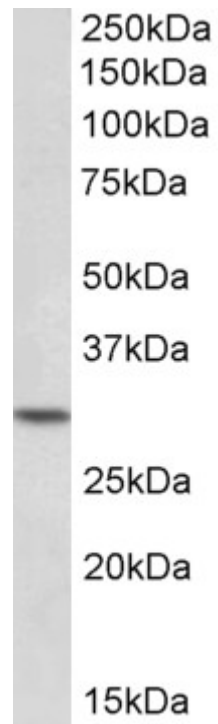
Western blot: Approx 30kDa band observed in Human Peripheral Blood

Mononucleocytes lysates and approx. 33kDa in Mouse Spinal Cord lysates (calculated MW of 27.8kDa according to NP_073149.1). Recommended concentration: 0.1-0.3µg/ml.

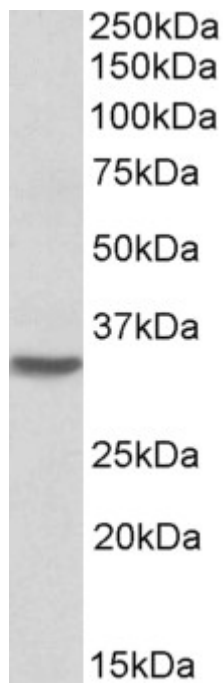
Species Reactivity

Tested: Human, Mouse

Expected from sequence similarity: Human, Mouse, Dog



EB10335 (0.1µg/ml) staining of Peripheral Blood Lymphocytes lysate (35µg protein in RIPA buffer). Primary incubation was 1 hour. Detected by chemiluminescence.



EB10335 (0.1µg/ml) staining of Mouse Spinal Cord lysate (35µg protein in RIPA buffer). Primary incubation was 1 hour. Detected by chemiluminescence.