



UK Office

Everest Biotech Ltd

Cherwell Innovation Centre
77 Heyford Park
Upper Heyford
Oxfordshire
OX25 5HD
UK

Enquiries:

info@everestbiotech.com

Sales:

sales@everestbiotech.com

Tech support:

support@everestbiotech.com

Tel: +44 (0)1869 238326

Fax: +44 (0)1869 238327

US Office

Everest Biotech c/o Abcore

405 Maple Street, Suite A106
Ramona,
CA 92065
USA

Inquiries:

info@everestbiotech.com

Sales:

usasales@everestbiotech.com

Tech support:

support@everestbiotech.com

Tel: 888-320-4628 (toll-free)

Fax: 888-841-9041

www.everestbiotech.com

**Research Use Only. Not for
diagnostic or therapeutic use.**

EB08884 - Goat Anti-HOXD10 Antibody

Size: 100µg specific antibody in 200µl



Target Protein

Principal Names: HOXD10, homeobox D10, HOX4, HOX4D, HOX4E, Hox-4.4, homeobox 4D, homeobox D10

Official Symbol: HOXD10

Accession Number(s): NP_002139.2

Human GeneID(s): [3236](#)

Non-Human GeneID(s): 15430 (mouse), 303991 (rat)

Immunogen

Peptide with sequence PNRSCRIEQPVTQQ, from the internal region of the protein sequence according to NP_002139.2.

Please note the [peptide](#) is available for sale.

Purification and Storage

Purified from goat serum by ammonium sulphate precipitation followed by antigen affinity chromatography using the immunizing peptide.

Supplied at 0.5 mg/ml in Tris saline, 0.02% sodium azide, pH7.3 with 0.5% bovine serum albumin.

Aliquot and store at -20°C. Minimize freezing and thawing.

Applications Tested

Peptide ELISA: antibody detection limit dilution 1:32000.

Western blot: Preliminary testing showed a band at approx 37kDa in Human Kidney lysate after 3µg/ml antibody staining (calculated MW of 38.4 kDa according to NP_002139.2). Primary incubation 1 hour at room temperature.

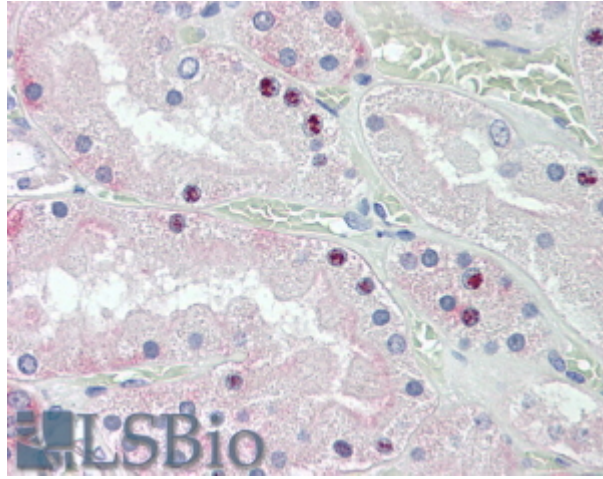
IHC: In paraffin embedded Human Kidney shows nuclear staining in some epithelial cells of PCT. Recommended concentration, 3-5µg/ml.

Flow Cytometry: Flow cytometric analysis of HEK293 cells. Recommended concentration: 10ug/ml.

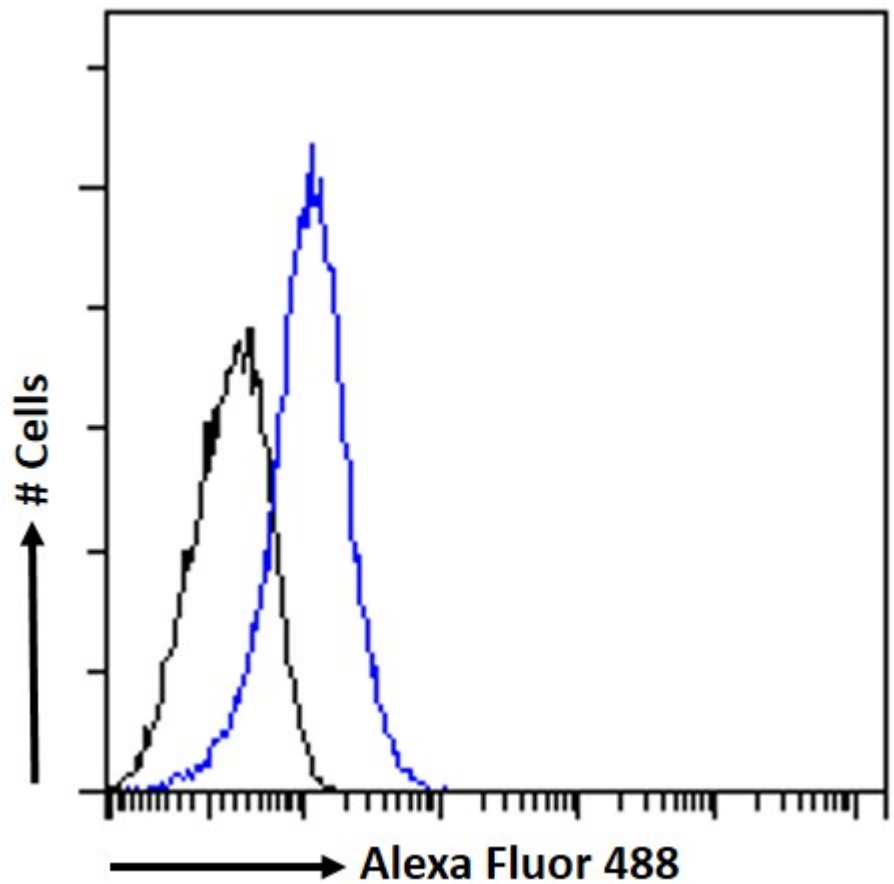
Species Reactivity

Tested: Human

Expected from sequence similarity: Human, Mouse, Rat, Horse, Cow



EB08884 (3.8µg/ml) staining of paraffin embedded Human Kidney. Steamed antigen retrieval with citrate buffer pH 6, AP-staining.



EB08884 Flow cytometric analysis of paraformaldehyde fixed HEK293 cells (blue line), permeabilized with 0.5% Triton. Primary incubation 1hr (10ug/ml) followed by Alexa Fluor 488 secondary antibody (1ug/ml). IgG control: Unimmunized goat IgG (black line) followed by Alexa Fluor 488 secondary antibody.