

## UK Office

### Everest Biotech Ltd

Cherwell Innovation Centre  
77 Heyford Park  
Upper Heyford  
Oxfordshire  
OX25 5HD  
UK

Enquiries:

[info@everestbiotech.com](mailto:info@everestbiotech.com)

Sales:

[sales@everestbiotech.com](mailto:sales@everestbiotech.com)

Tech support:

[support@everestbiotech.com](mailto:support@everestbiotech.com)

Tel: +44 (0)1869 238326

[www.everestbiotech.com](http://www.everestbiotech.com)

**Research Use Only. Not for  
diagnostic or therapeutic use.**

## EB11197 - Goat Anti-HP alpha chain Antibody

Size: 100µg specific antibody in 200µl



### Target Protein

**Principal Names:** binding peptide, BP, haptoglobin, haptoglobin alpha(1S)-beta, haptoglobin alpha(2FS)-beta, haptoglobin, alpha polypeptide, haptoglobin, beta polypeptide, HP2ALPHA2, HPA1S, MGC111141, HP

**Official Symbol:** HP

**Accession Number(s):** NP\_005134.1; NP\_001119574.1; NP\_001305067.1

**Human GeneID(s):** [3240](#)

**Important Comments:** This antibody is expected to recognize both reported isoforms (NP\_005134.1; NP\_001119574.1).

### Immunogen

Peptide with sequence QCKNYYKLRTEGD, from the internal region of the protein sequence according to NP\_005134.1; NP\_001119574.1; NP\_001305067.1.

Please note the [peptide](#) is available for sale.

### Purification and Storage

Purified from goat serum by ammonium sulphate precipitation followed by antigen affinity chromatography using the immunizing peptide.

Supplied at 0.5 mg/ml in Tris saline, 0.02% sodium azide, pH7.3 with 0.5% bovine serum albumin.

Aliquot and store at -20°C. Minimize freezing and thawing.

### Applications Tested

**Peptide ELISA:** antibody detection limit dilution 1:32000.

**Western blot:** Approx 18kDa band observed in Human Liver lysates and approx. 20kDa in preliminary testing of HepG2 cell lysate (calculated MW of 18kDa according to alpha chain cleaved from NP\_005134.1). Recommended concentration: 0.01-0.03µg/ml.

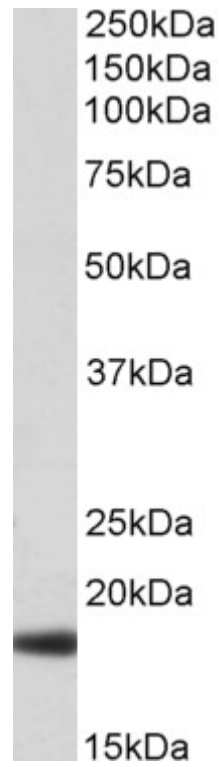
Primary incubation 1 hour at room temperature.

**Flow Cytometry:** Flow cytometric analysis of HepG2 cells. Recommended concentration: 10ug/ml.

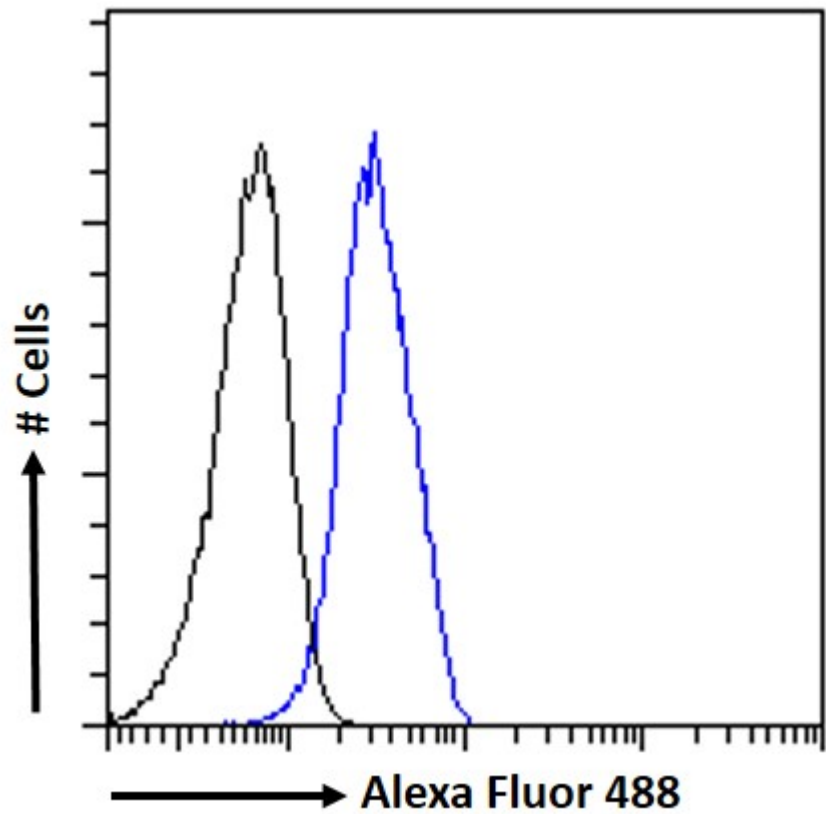
### Species Reactivity

**Tested:** Human

**Expected from sequence similarity:** Human



EB11197 (0.01 $\mu$ g/ml) staining of Human Liver lysate (35 $\mu$ g protein in RIPA buffer). Detected by chemiluminescence.



EB11197 Flow cytometric analysis of paraformaldehyde fixed HepG2 cells (blue line), permeabilized with 0.5% Triton. Primary incubation 1hr (10 $\mu$ g/ml) followed by Alexa Fluor 488 secondary antibody (1 $\mu$ g/ml). IgG control: Unimmunized goat IgG (black line) followed by Alexa Fluor 488 secondary antibody.