



UK Office

Everest Biotech Ltd

Cherwell Innovation Centre
77 Heyford Park
Upper Heyford
Oxfordshire
OX25 5HD
UK

Enquiries:

info@everestbiotech.com

Sales:

sales@everestbiotech.com

Tech support:

support@everestbiotech.com

Tel: +44 (0)1869 238326

Fax: +44 (0)1869 238327

US Office

Everest Biotech c/o Abcore

405 Maple Street, Suite A106
Ramona,
CA 92065
USA

Inquiries:

info@everestbiotech.com

Sales:

usasales@everestbiotech.com

Tech support:

support@everestbiotech.com

Tel: 888-320-4628 (toll-free)

Fax: 888-841-9041

www.everestbiotech.com

**Research Use Only. Not for
diagnostic or therapeutic use.**

EB11197 - Goat Anti-HP alpha chain Antibody

Size: 100µg specific antibody in 200µl



Target Protein

Principal Names: binding peptide, BP, haptoglobin, haptoglobin alpha(1S)-beta, haptoglobin alpha(2FS)-beta, haptoglobin, alpha polypeptide, haptoglobin, beta polypeptide, HP2ALPHA2, HPA1S, MGC111141, HP

Official Symbol: HP

Accession Number(s): NP_005134.1; NP_001119574.1

Human GeneID(s): [3240](#)

Important Comments: This antibody is expected to recognize both reported isoforms (NP_005134.1; NP_001119574.1).

Immunogen

Peptide with sequence QCKNYYKLRTEGD, from the internal region of the protein sequence according to NP_005134.1; NP_001119574.1.

Please note the [peptide](#) is available for sale.

Purification and Storage

Purified from goat serum by ammonium sulphate precipitation followed by antigen affinity chromatography using the immunizing peptide.

Supplied at 0.5 mg/ml in Tris saline, 0.02% sodium azide, pH7.3 with 0.5% bovine serum albumin.

Aliquot and store at -20°C. Minimize freezing and thawing.

Applications Tested

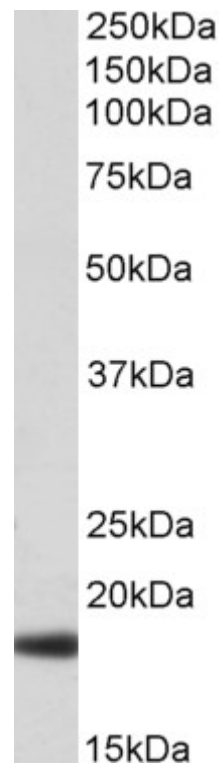
Peptide ELISA: antibody detection limit dilution 1:32000.

Western blot: Approx 18kDa band observed in Human Liver lysates (calculated MW of 18kDa according to alpha chain cleaved from NP_005134.1). Recommended concentration: 0.01-0.03µg/ml.

Species Reactivity

Tested: Human

Expected from sequence similarity: Human



EB11197 (0.01µg/ml) staining of Human Liver lysate (35µg protein in RIPA buffer). Primary incubation was 1 hour. Detected by chemiluminescence.