



UK Office

Everest Biotech Ltd

Cherwell Innovation Centre
77 Heyford Park
Upper Heyford
Oxfordshire
OX25 5HD
UK

Enquiries:

info@everestbiotech.com

Sales:

sales@everestbiotech.com

Tech support:

support@everestbiotech.com

Tel: +44 (0)1869 238326

Fax: +44 (0)1869 238327

US Office

Everest Biotech c/o Abcore

405 Maple Street, Suite A106
Ramona,
CA 92065
USA

Inquiries:

info@everestbiotech.com

Sales:

usasales@everestbiotech.com

Tech support:

support@everestbiotech.com

Tel: 888-320-4628 (toll-free)

Fax: 888-841-9041

www.everestbiotech.com

**Research Use Only. Not for
diagnostic or therapeutic use.**

EB06624 - Goat Anti-HPS6 Antibody

Size: 100µg specific antibody in 200µl



Target Protein

Principal Names: HPS6, FLJ22501, MGC20522, Hermansky-Pudlak syndrome 6, RP11-302K17.1, Hermansky-Pudlak syndrome-6, Hermansky-Pudlak syndrome-6

Official Symbol: HPS6

Accession Number(s): NP_079023

Human GeneID(s): [79803](#)

Immunogen

Peptide with sequence LRTELRDYRGLEEC, from the internal region of the protein sequence according to NP_079023.

Please note the [peptide](#) is available for sale.

Purification and Storage

Purified from goat serum by ammonium sulphate precipitation followed by antigen affinity chromatography using the immunizing peptide.

Supplied at 0.5 mg/ml in Tris saline, 0.02% sodium azide, pH7.3 with 0.5% bovine serum albumin.

Aliquot and store at -20°C. Minimize freezing and thawing.

Applications Tested

Peptide ELISA: antibody detection limit dilution 1:32000.

Western blot: Approx 90-100kDa band observed in Human Lung and Human Skin lysates (calculated MW of 83.0kDa according to NP_079023). Recommended concentration: 1-3µg/ml. Primary incubation was for 1 hour.

IHC: Paraffin embedded Human Brain (Cortex). Recommended concentration: 5µg/ml.

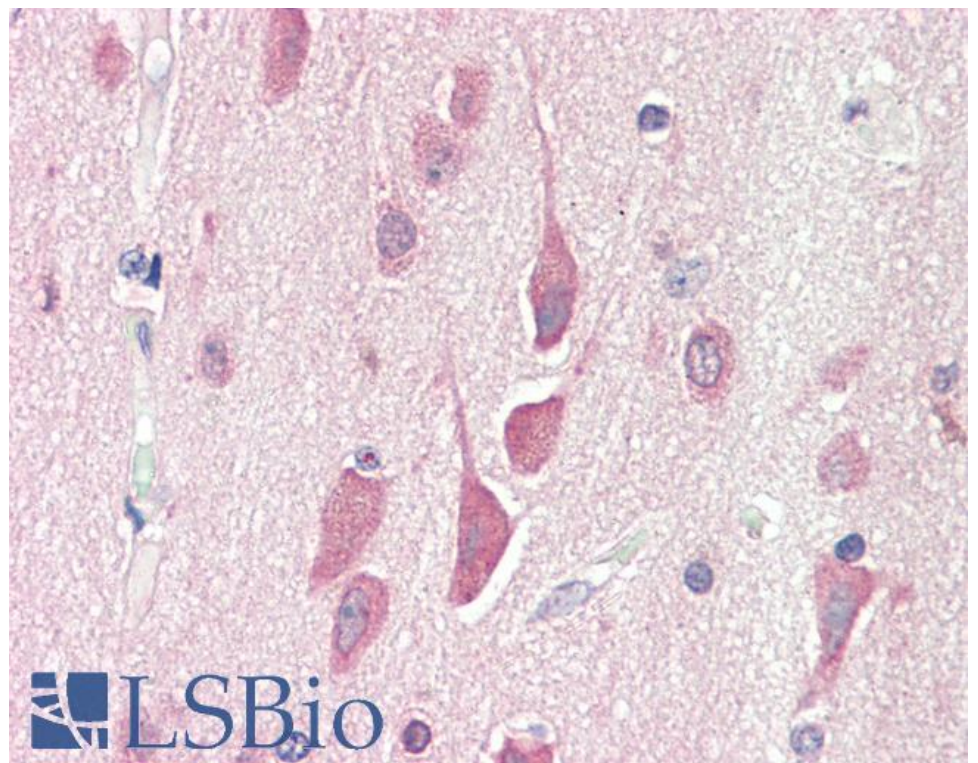
Species Reactivity

Tested: Human

Expected from sequence similarity: Human, Mouse, Rat, Pig, Cow



EB06624 staining (1µg/ml) of Human Lung lysate (RIPA buffer, 30µg total protein per lane). Detected by chemiluminescence.



EB06624 (5µg/ml) staining of paraffin embedded Human Cortex. Steamed antigen retrieval with citrate buffer pH 6, AP-staining.