

## UK Office

**Everest Biotech Ltd**  
Cherwell Innovation Centre  
77 Heyford Park  
Upper Heyford  
Oxfordshire  
OX25 5HD  
UK

Enquiries:

[info@everestbiotech.com](mailto:info@everestbiotech.com)

Sales:

[sales@everestbiotech.com](mailto:sales@everestbiotech.com)

Tech support:

[support@everestbiotech.com](mailto:support@everestbiotech.com)

Tel: +44 (0)1869 238326

[www.everestbiotech.com](http://www.everestbiotech.com)

**Research Use Only. Not for  
diagnostic or therapeutic use.**

## EB08620 - Goat Anti-HRASLS2 Antibody

Size: 100µg specific antibody in 200µl



### Target Protein

**Principal Names:** HRASLS2, HRAS-like suppressor 2, FLJ20556

**Official Symbol:** HRASLS2

**Accession Number(s):** NP\_060348.1

**Human GeneID(s):** [54979](#)

**Important Comments:** This design was based on provisional sequence data.

### Immunogen

Peptide with sequence QELPYSLTSDNC, from the internal region of the protein sequence according to NP\_060348.1.

Please note the [peptide](#) is available for sale.

### Purification and Storage

Purified from goat serum by ammonium sulphate precipitation followed by antigen affinity chromatography using the immunizing peptide.

Supplied at 0.5 mg/ml in Tris saline, 0.02% sodium azide, pH7.3 with 0.5% bovine serum albumin.

Aliquot and store at -20°C. Minimize freezing and thawing.

### Applications Tested

**Peptide ELISA:** antibody detection limit dilution 1:16000.

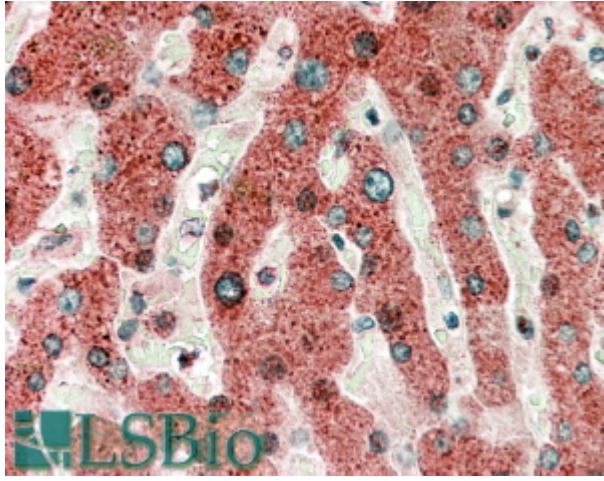
**Western blot:** Preliminary experiments gave an approx. 21kDa band in Human Kidney lysates after 0.5 µg/ml antibody staining. Please note that currently we cannot find an explanation in the literature for the band we observe given the calculated size of 17.4kDa according to NP\_060348.1 (provisional). The 21kDa band was successfully blocked by incubation with the immunizing peptide. We would appreciate any feedback from people in the field - have any results been reported with other antibodies/lysates? Have any further splice variants/modified forms been reported?

**IHC:** In paraffin embedded Human Liver shows a granular pattern in the cytoplasm of hepatocytes. Recommended concentration, 5-10µg/ml.

### Species Reactivity

**Tested:** Human

**Expected from sequence similarity:** Human



EB08620 (5 $\mu$ g/ml) staining of paraffin embedded Human Liver. Microwaved antigen retrieval with Tris/EDTA buffer pH9, HRP-staining.