



## UK Office

### Everest Biotech Ltd

Cherwell Innovation Centre  
77 Heyford Park  
Upper Heyford  
Oxfordshire  
OX25 5HD  
UK

Enquiries:

[info@everestbiotech.com](mailto:info@everestbiotech.com)

Sales:

[sales@everestbiotech.com](mailto:sales@everestbiotech.com)

Tech support:

[support@everestbiotech.com](mailto:support@everestbiotech.com)

Tel: +44 (0)1869 238326

[www.everestbiotech.com](http://www.everestbiotech.com)

**Research Use Only. Not for  
diagnostic or therapeutic use.**

## EB08338 - Goat Anti-HRASLS3 / HREV107-3 Antibody

Size: 100µg specific antibody in 200µl



### Target Protein

**Principal Names:** PLA2G16, phospholipase A2, group XVI, AdPLA, H-REV107-1, HRASLS3, HREV107, HREV107-3, MGC118754, HRAS-like suppressor 3, adipose-specific PLA2

**Official Symbol:** PLAAT3

**Accession Number(s):** NP\_009000.2

**Human GeneID(s):** [11145](#)

**Non-Human GeneID(s):** 225845 (mouse), 24913 (rat)

**Important Comments:** Reported variants represent identical protein:NP\_009000.2 and NP\_001121675.1).

### Immunogen

Peptide with sequence RAPIPEPKGDLIE-C, from the N Terminus of the protein sequence according to NP\_009000.2.

Please note the [peptide](#) is available for sale.

### Purification and Storage

Purified from goat serum by ammonium sulphate precipitation followed by antigen affinity chromatography using the immunizing peptide.

Supplied at 0.5 mg/ml in Tris saline, 0.02% sodium azide, pH7.3 with 0.5% bovine serum albumin.

Aliquot and store at -20°C. Minimize freezing and thawing.

### Applications Tested

**Peptide ELISA:** antibody detection limit dilution 1:128000.

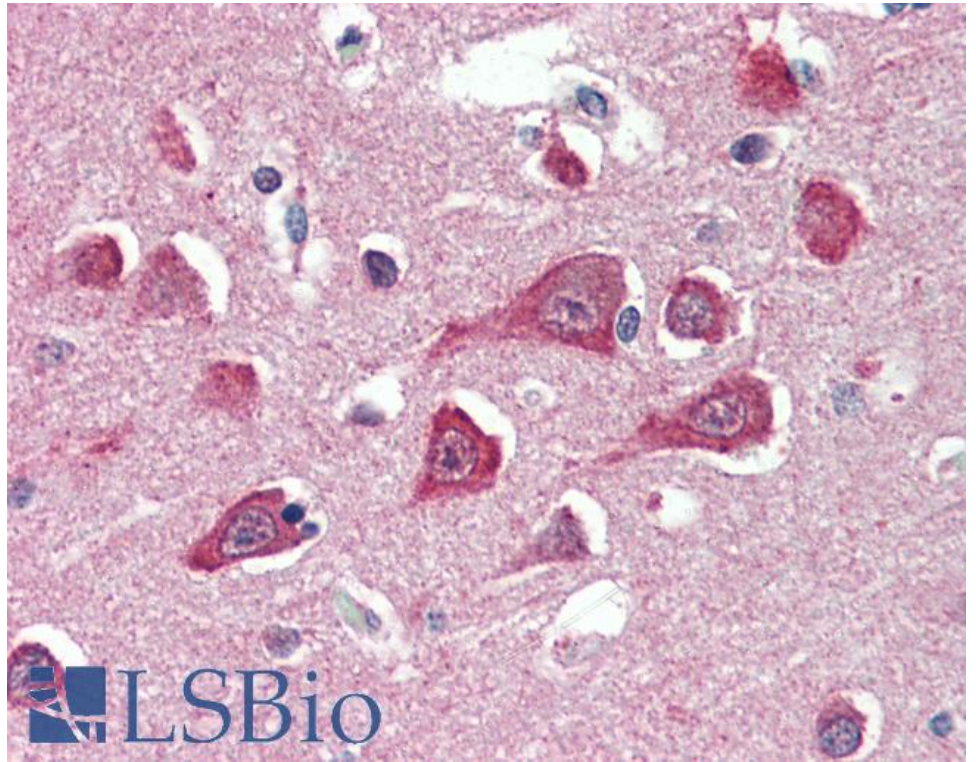
**Western blot:** Preliminary experiments gave an approx 28kDa band in Human Heart lysates after 0.1µg/ml antibody staining. Please note that currently we cannot find an explanation in the literature for the band we observe given the calculated size of 18.0kDa according to NP\_009000.1. The 28kDa band was successfully blocked by incubation with the immunizing peptide.

**IHC:** Paraffin embedded Human Brain (Cortex). Recommended concentration: 5µg/ml.

### Species Reactivity

**Tested:** Human

**Expected from sequence similarity:** Human, Mouse, Rat, Cow



EB08338 (5µg/ml) staining of paraffin embedded Human Cortex. Steamed antigen retrieval with citrate buffer pH 6, AP-staining.