



UK Office

Everest Biotech Ltd

Cherwell Innovation Centre
77 Heyford Park
Upper Heyford
Oxfordshire
OX25 5HD
UK

Enquiries:

info@everestbiotech.com

Sales:

sales@everestbiotech.com

Tech support:

support@everestbiotech.com

Tel: +44 (0)1869 238326

Fax: +44 (0)1869 238327

US Office

Everest Biotech c/o Abcore

405 Maple Street, Suite A106
Ramona,
CA 92065
USA

Inquiries:

info@everestbiotech.com

Sales:

usasales@everestbiotech.com

Tech support:

support@everestbiotech.com

Tel: 888-320-4628 (toll-free)

Fax: 888-841-9041

www.everestbiotech.com

**Research Use Only. Not for
diagnostic or therapeutic use.**

EB12438 - Goat Anti-HS3ST1 Antibody

Size: 100µg specific antibody in 200µl



Target Protein

Principal Names: HS3ST1, heparan sulfate (glucosamine) 3-O-sulfotransferase 1, 3OST, 3OST1, 3-OST-1, h3-OST-1, heparan sulfate 3-O-sulfotransferase 1, heparan sulfate D-glucosaminyl 3-O-sulfotransferase 1, heparan sulfate glucosamine 3-O-sulfotransferase 1, heparin-glucos

Official Symbol: HS3ST1

Accession Number(s): NP_005105.1

Human GeneID(s): [9957](#)

Immunogen

Peptide with sequence C-NKLHEYFHEPNKK, from the C Terminus of the protein sequence according to NP_005105.1.

Please note the [peptide](#) is available for sale.

Purification and Storage

Purified from goat serum by ammonium sulphate precipitation followed by antigen affinity chromatography using the immunizing peptide.

Supplied at 0.5 mg/ml in Tris saline, 0.02% sodium azide, pH7.3 with 0.5% bovine serum albumin.

Aliquot and store at -20°C. Minimize freezing and thawing.

Applications Tested

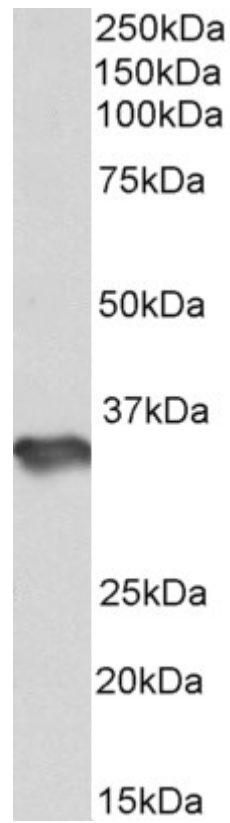
Peptide ELISA: antibody detection limit dilution 1:128000.

Western blot: Approx 35kDa band observed in Human Brain (Cerebellum, Cerebral Cortex, Frontal Cortex) lysates (calculated MW of 35.8kDa according to NP_005105.1).
Recommended concentration: 1-3µg/ml.

Species Reactivity

Tested: Human

Expected from sequence similarity: Human, Cow



EB12438 (1µg/ml) staining of Human Cerebellum lysate (35µg protein in RIPA buffer). Primary incubation was 1 hour. Detected by chemiluminescence.