

UK Office

Everest Biotech Ltd

Cherwell Innovation Centre
77 Heyford Park
Upper Heyford
Oxfordshire
OX25 5HD
UK

Enquiries:

info@everestbiotech.com

Sales:

sales@everestbiotech.com

Tech support:

support@everestbiotech.com

Tel: +44 (0)1869 238326

www.everestbiotech.com

**Research Use Only. Not for
diagnostic or therapeutic use.**

EB11062 - Goat Anti-Hsd11b1 (mouse) Antibody

Size: 100µg specific antibody in 200µl



Target Protein

Principal Names: 11-beta-HSD1, 11-beta-hydroxysteroid dehydrogenase 1, 11-DH, corticosteroid 11-beta-dehydrogenase isozyme 1, HDL, HSD11, HSD11B, HSD11L, hydroxysteroid (11-beta) dehydrogenase 1, short chain dehydrogenase/reductase family 26C, member 1, Hsd11b1

Official Symbol: Hsd11b1

Accession Number(s): NP_032314.2

Non-Human GeneID(s): 15483 (mouse), 25116 (rat)

Immunogen

Peptide with sequence C-TARSEEGLQKVVSRL, from the internal region of the protein sequence according to NP_032314.2.

Please note the [peptide](#) is available for sale.

Purification and Storage

Purified from goat serum by ammonium sulphate precipitation followed by antigen affinity chromatography using the immunizing peptide.

Supplied at 0.5 mg/ml in Tris saline, 0.02% sodium azide, pH7.3 with 0.5% bovine serum albumin.

Aliquot and store at -20°C. Minimize freezing and thawing.

Applications Tested

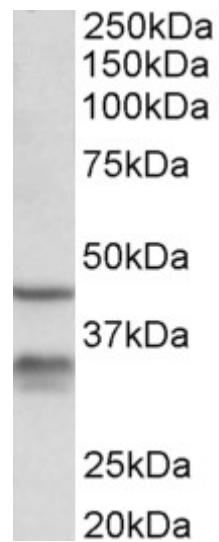
Peptide ELISA: antibody detection limit dilution 1:32000.

Western blot: Approx 32kDa band observed in Mouse Lung lysates (calculated MW of 32.4kDa according to NP_032314.2). Recommended concentration: 0.3-1µg/ml. An additional band of unknown identity was also consistently observed at 45kDa. This band was successfully blocked by incubation with the immunizing peptide. However, it remained visible in a KO background.

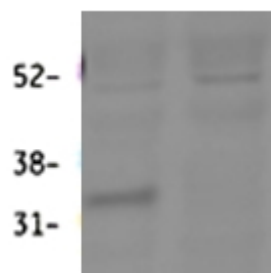
Species Reactivity

Tested: Mouse

Expected from sequence similarity: Mouse, Rat



EB11062 (0.3 μ g/ml) staining of Mouse Lung lysate (35 μ g protein in RIPA buffer). Primary incubation was 1 hour. Detected by chemiluminescence.



EB11062 (0.3 μ g/ml) staining of Mouse Lung lysate (60 μ g protein in RIPA buffer). First lane shows wildtype and second lane shows knockout background. Primary incubation was overnight. Detected by fluorescence with Li-cor). Data obtained from Prof. K. Chapman and Zhenguang Zhang, Centre for Cardiovascular Sciences, Queen's Medical Research Institute, Edinburgh, UK