



UK Office

Everest Biotech Ltd

Cherwell Innovation Centre
77 Heyford Park
Upper Heyford
Oxfordshire
OX25 5HD
UK

Enquiries:

info@everestbiotech.com

Sales:

sales@everestbiotech.com

Tech support:

support@everestbiotech.com

Tel: +44 (0)1869 238326

www.everestbiotech.com

**Research Use Only. Not for
diagnostic or therapeutic use.**

EB11978 - Goat Anti-HSPA13 / STCH (aa83-95) Antibody

Size: 100µg specific antibody in 200µl



Target Protein

Principal Names: HSPA13, heat shock protein 70kDa family, member 13, STCH, heat shock 70 kDa protein 13, microsomal stress 70 protein ATPase core, microsomal stress-70 protein ATPase core, stress 70 protein chaperone, microsome-associated, 60kD, stress 70 protein chaperone, microsome-associated, 60kDa, stress-70 protein chaperone microsome-associated 60 kDa protein

Official Symbol: HSPA13

Accession Number(s): NP_008879.3

Human GeneID(s): [6782](#)

Immunogen

Peptide with sequence C-ESVELADSNPQNT, from the internal region of the protein sequence according to NP_008879.3.

Please note the [peptide](#) is available for sale.

Purification and Storage

Purified from goat serum by ammonium sulphate precipitation followed by antigen affinity chromatography using the immunizing peptide.

Supplied at 0.5 mg/ml in Tris saline, 0.02% sodium azide, pH7.3 with 0.5% bovine serum albumin.

Aliquot and store at -20°C. Minimize freezing and thawing.

Applications Tested

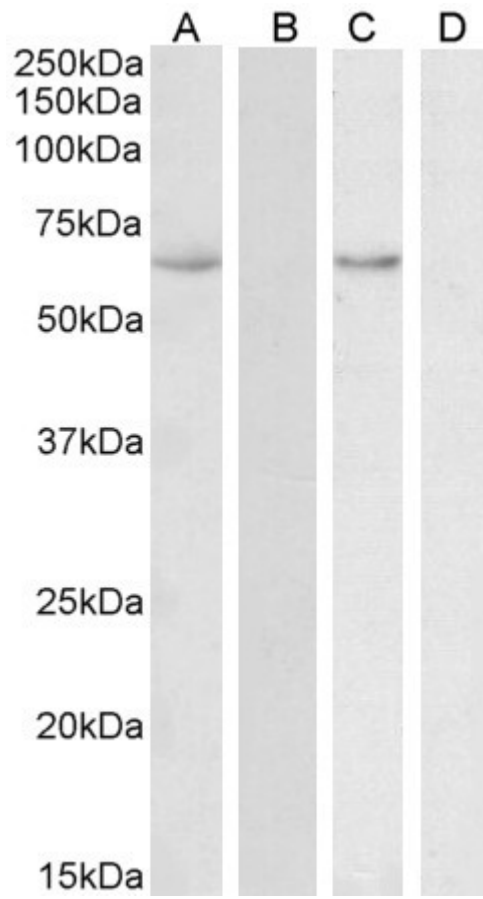
Peptide ELISA: antibody detection limit dilution 1:128000.

Western blot: Approx 60-65kDa band observed in Human Uterus and Colon lysates (calculated MW of 51.9kDa according to NP_008879.3). This band was successfully blocked by incubation with the immunizing peptide and corresponds to different antibodies from other sources. Recommended concentration: 0.1-0.3µg/ml. Primary incubation 1 hour at room temperature.

Species Reactivity

Tested: Human

Expected from sequence similarity: Human



EB11978 (0.1 μ g/ml) staining of Human Uterus lysate (A) + peptide (B) and (0.3 μ g/ml) Colon lysate (C) + peptide (D) (35 μ g protein in RIPA buffer). Detected by chemiluminescence.