



## UK Office

### Everest Biotech Ltd

Cherwell Innovation Centre  
77 Heyford Park  
Upper Heyford  
Oxfordshire  
OX25 5HD  
UK

Enquiries:

[info@everestbiotech.com](mailto:info@everestbiotech.com)

Sales:

[sales@everestbiotech.com](mailto:sales@everestbiotech.com)

Tech support:

[support@everestbiotech.com](mailto:support@everestbiotech.com)

Tel: +44 (0)1869 238326

Fax: +44 (0)1869 238327

## US Office

### Everest Biotech c/o Abcore

405 Maple Street, Suite A106  
Ramona,  
CA 92065  
USA

Inquiries:

[info@everestbiotech.com](mailto:info@everestbiotech.com)

Sales:

[usasales@everestbiotech.com](mailto:usasales@everestbiotech.com)

Tech support:

[support@everestbiotech.com](mailto:support@everestbiotech.com)

Tel: 888-320-4628 (toll-free)

Fax: 888-841-9041

[www.everestbiotech.com](http://www.everestbiotech.com)

**Research Use Only. Not for  
diagnostic or therapeutic use.**

## EB11978 - Goat Anti-HSPA13 / STCH (aa83-95) Antibody

Size: 100µg specific antibody in 200µl



### Target Protein

**Principal Names:** HSPA13, heat shock protein 70kDa family, member 13, STCH, heat shock 70 kDa protein 13, microsomal stress 70 protein ATPase core, microsomal stress-70 protein ATPase core, stress 70 protein chaperone, microsome-associated, 60kD, stress 70 protein chaperone, microsome-associated, 60kDa, stress-70 protein chaperone microsome-associated 60 kDa protein

**Official Symbol:** HSPA13

**Accession Number(s):** NP\_008879.3

**Human GenelD(s):** [6782](#)

### Immunogen

Peptide with sequence C-ESVELADSNPQNT, from the internal region of the protein sequence according to NP\_008879.3.

Please note the [peptide](#) is available for sale.

### Purification and Storage

Purified from goat serum by ammonium sulphate precipitation followed by antigen affinity chromatography using the immunizing peptide.

Supplied at 0.5 mg/ml in Tris saline, 0.02% sodium azide, pH7.3 with 0.5% bovine serum albumin.

Aliquot and store at -20°C. Minimize freezing and thawing.

### Applications Tested

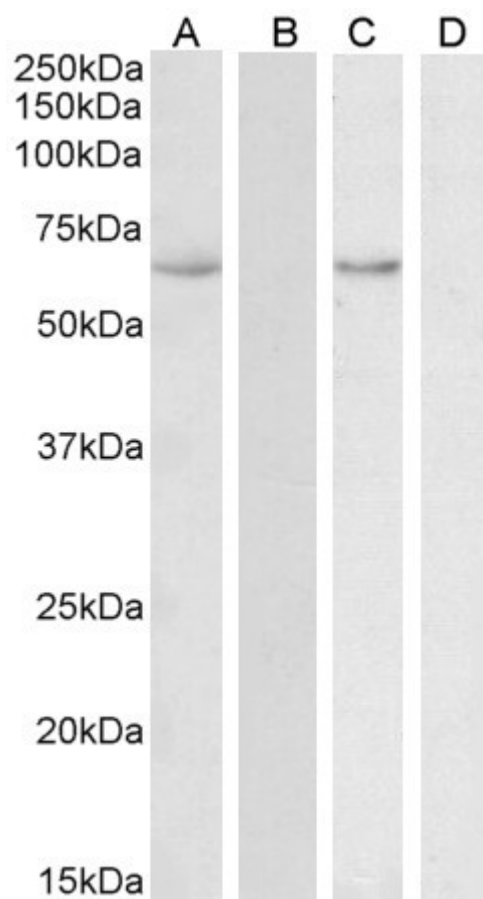
**Peptide ELISA:** antibody detection limit dilution 1:128000.

**Western blot:** Approx 60-65kDa band observed in Human Uterus and Colon lysates (calculated MW of 51.9kDa according to NP\_008879.3)..This band was successfully blocked by incubation with the immunizing peptide and corresponds to different antibodies from other sources. Recommended concentration: 0.1-0.3µg/ml. Primary incubation 1 hour at room temperature.

### Species Reactivity

**Tested:** Human

**Expected from sequence similarity:** Human



EB11978 (0.1µg/ml) staining of Human Uterus lysate (A) + peptide (B) and (0.3ug/ml) Colon lysate (C) + peptide (D) (35µg protein in RIPA buffer). Detected by chemiluminescence.