



UK Office

Everest Biotech Ltd

Cherwell Innovation Centre
77 Heyford Park
Upper Heyford
Oxfordshire
OX25 5HD
UK

Enquiries:

info@everestbiotech.com

Sales:

sales@everestbiotech.com

Tech support:

support@everestbiotech.com

Tel: +44 (0)1869 238326

Fax: +44 (0)1869 238327

US Office

Everest Biotech c/o Abcore

405 Maple Street, Suite A106
Ramona,
CA 92065
USA

Inquiries:

info@everestbiotech.com

Sales:

usasales@everestbiotech.com

Tech support:

support@everestbiotech.com

Tel: 888-320-4628 (toll-free)

Fax: 888-841-9041

www.everestbiotech.com

**Research Use Only. Not for
diagnostic or therapeutic use.**

EB12856 - Goat Anti-HSPA5 / GRP78 (aa118-131) Antibody

Size: 100µg specific antibody in 200µl



Target Protein

Principal Names: HSPA5, heat shock 70kDa protein 5 (glucose-regulated protein, 78kDa), BIP, GRP78, HEL-S-89n, MIF2, 78 kDa glucose-regulated protein, endoplasmic reticulum luminal Ca(2+)-binding protein grp78, epididymis secretory sperm binding protein Li 89n, immunoglobulin

Official Symbol: HSPA5

Accession Number(s): NP_005338.1

Human GeneID(s): [3309](#)

Immunogen

Peptide with sequence C-KVVEKKTTPYIQVD, from the internal region of the protein sequence according to NP_005338.1.

Please note the [peptide](#) is available for sale.

Purification and Storage

Purified from goat serum by ammonium sulphate precipitation followed by antigen affinity chromatography using the immunizing peptide.

Supplied at 0.5 mg/ml in Tris saline, 0.02% sodium azide, pH7.3 with 0.5% bovine serum albumin.

Aliquot and store at -20°C. Minimize freezing and thawing.

Applications Tested

Peptide ELISA: antibody detection limit dilution 1:128000.

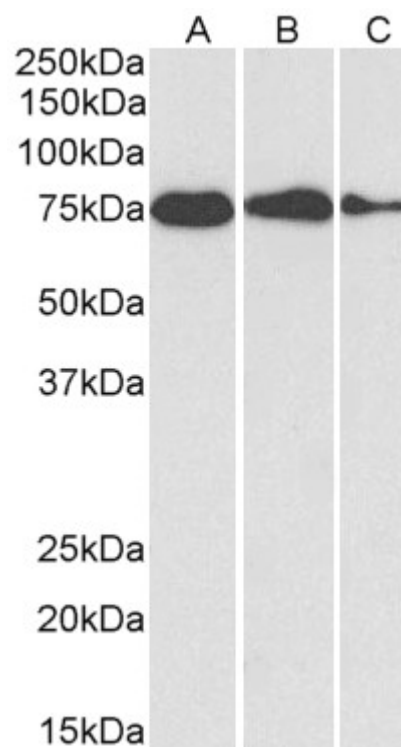
Western blot: Approx 75kDa band observed in lysates of cell lines HepG2, HeLa and MCF7, and in Mouse Liver and Testis lysates, and approx. 80kDa band in Rat Brain lysates (calculated MW of 72.3kDa according to Human NP_005338.1 and Rat NP_037215.1, and 72.4kDa according to Mouse NP_071705.3). This molecular weight is routinely observed by other sources. Recommended concentration: 0.01-0.1 µg/ml. Primary incubation was 1 hour.

Immunofluorescence: Strong expression of the protein seen in the cytoplasm of HeLa cells. Recommended concentration: 5 µg/ml.

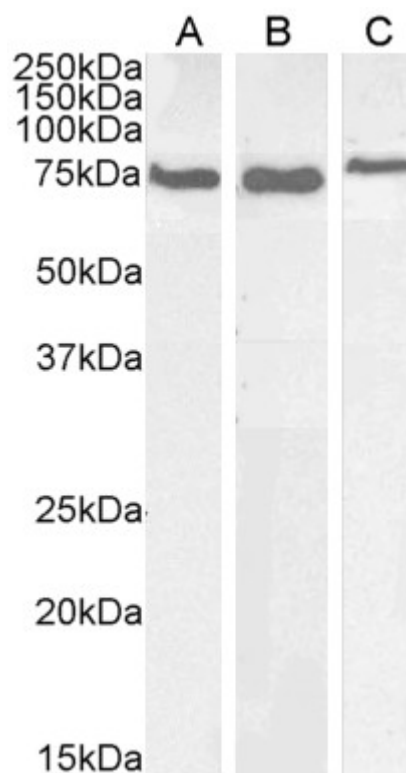
Species Reactivity

Tested: Human, Mouse, Rat

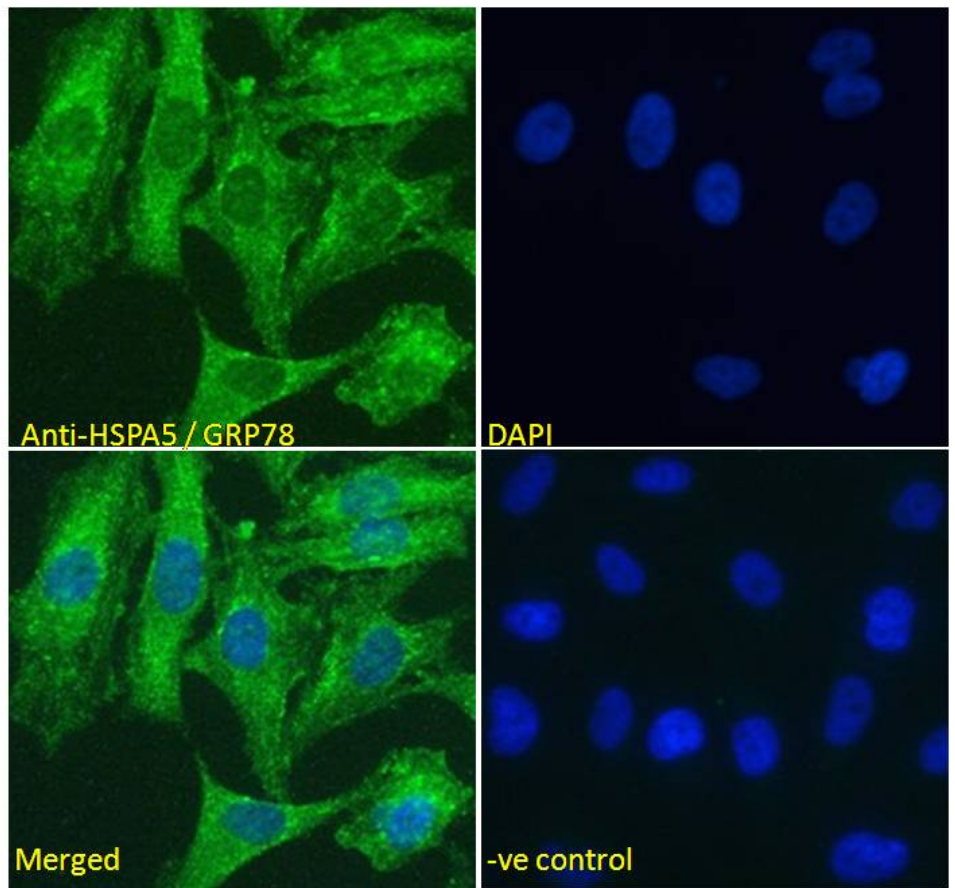
Expected from sequence similarity: Human



EB12856 (0.1µg/ml) staining of HepG2 (A), HeLa (B) and MCF7 (C) cell lysate (35µg protein in RIPA buffer). Detected by chemiluminescence.



EB12856 (0.01µg/ml) staining of Mouse Liver (A) and Testes (B) and Rat Brain (C) lysate (35µg protein in RIPA buffer). Detected by chemiluminescence.



EB12856 Immunofluorescence analysis of paraformaldehyde fixed HeLa cells, permeabilized with 0.15% Triton. Primary incubation 1hr (5ug/ml) followed by Alexa Fluor 488 secondary antibody (2ug/ml), showing cytoplasmic staining. The nuclear stain is DAPI (blue). Negative control: Unimmunized goat IgG (5ug/ml) followed by Alexa Fluor 488 secondary antibody (2ug/ml).