



UK Office

Everest Biotech Ltd

Cherwell Innovation Centre
77 Heyford Park
Upper Heyford
Oxfordshire
OX25 5HD
UK

Enquiries:

info@everestbiotech.com

Sales:

sales@everestbiotech.com

Tech support:

support@everestbiotech.com

Tel: +44 (0)1869 238326

Fax: +44 (0)1869 238327

US Office

Everest Biotech c/o Abcore

405 Maple Street, Suite A106
Ramona,
CA 92065
USA

Inquiries:

info@everestbiotech.com

Sales:

usasales@everestbiotech.com

Tech support:

support@everestbiotech.com

Tel: 888-320-4628 (toll-free)

Fax: 888-841-9041

www.everestbiotech.com

**Research Use Only. Not for
diagnostic or therapeutic use.**

EB07295 - Goat Anti-HSPA8 (Isoform 1) Antibody

Size: 100µg specific antibody in 200µl



Target Protein

Principal Names: HSPA8, heat shock 70kDa protein 8, HSC54, HSC70, HSC71, HSP71, HSP73, HSPA10, LAP, MGC131511, MGC29929, NIP71, LPS-associated protein 1, N-myristoyltransferase inhibitor protein 71, constitutive heat shock protein 70, heat shock 70kD protein 8, heat shock 70kd protein 10, heat shock cognate protein 54, heat shock cognate protein, 71-kDa, lipopolysaccharide-associated protein, uncharacterized bone marrow protein BM034

Official Symbol: HSPA8

Accession Number(s): NP_006588.1

Human GeneID(s): [3312](#)

Non-Human GeneID(s): 15481 (mouse), 24468 (rat)

Important Comments: This antibody is expected to recognise isoform 1 (NP_006588.1) only.

Immunogen

Peptide with sequence C-EKLQGKINDEDKQK, from the internal region of the protein sequence according to NP_006588.1.

Please note the [peptide](#) is available for sale.

Purification and Storage

Purified from goat serum by ammonium sulphate precipitation followed by antigen affinity chromatography using the immunizing peptide.

Supplied at 0.5 mg/ml in Tris saline, 0.02% sodium azide, pH7.3 with 0.5% bovine serum albumin.

Aliquot and store at -20°C. Minimize freezing and thawing.

Applications Tested

Peptide ELISA: antibody detection limit dilution 1:4000.

Western blot: Approx 75kDa band observed in lysates of cell lines HepG2 and NIH3T3 (calculated MW of 70.9kDa according to Human NP_006588.1 and Mouse NP_112442.2).

This molecular weight is routinely observed by other sources. Recommended concentration: 0.03-0.1µg/ml. Primary incubation 1 hour at room temperature.

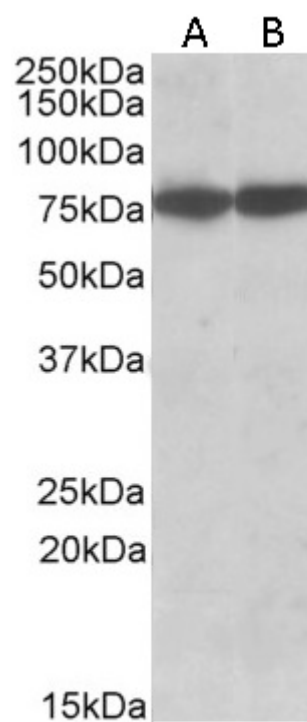
IHC: Paraffin embedded Human Prostate. Recommended concentration: 5µg/ml.

Immunofluorescence: Strong expression of the protein seen in the cytoplasm of HeLa cells. Recommended concentration: 10µg/ml

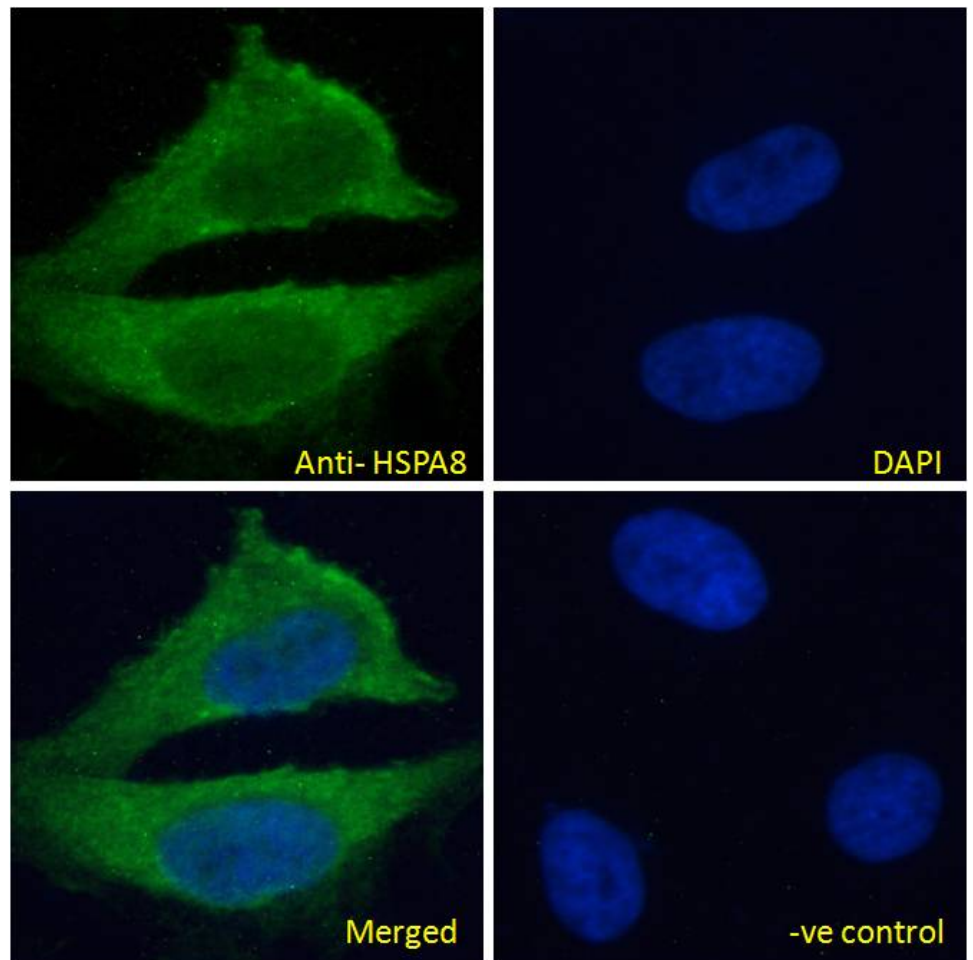
Species Reactivity

Tested: Human, Mouse

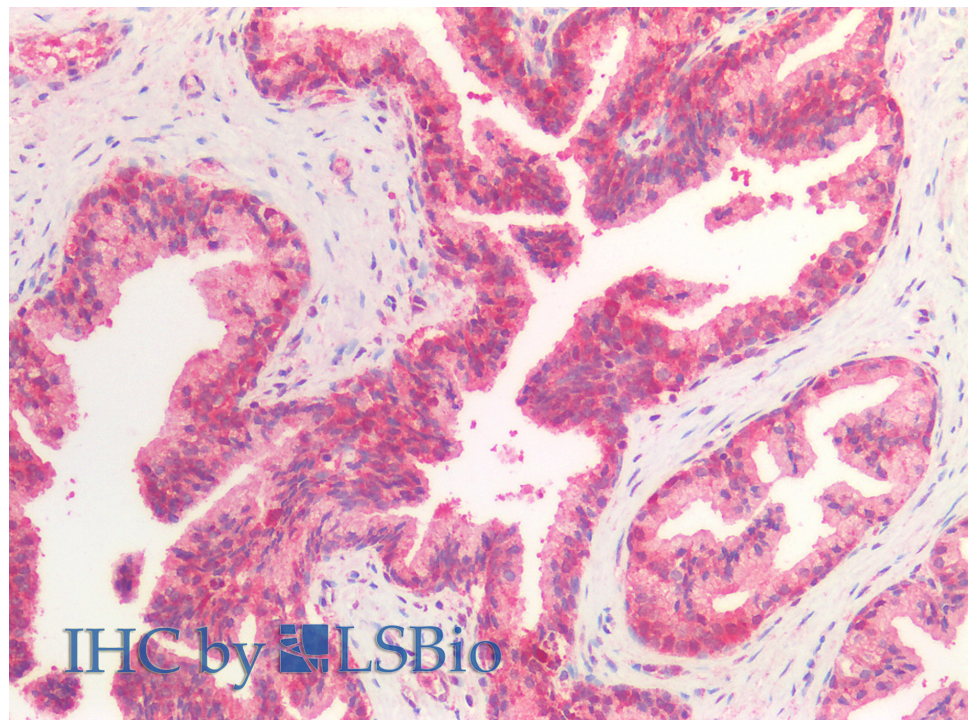
Expected from sequence similarity: Human, Mouse, Rat, Dog



EB07295 (0.03 μ g/ml) staining of HepG2 (A) and NIH3T3 (B) cell lysate (35 μ g protein in RIPA buffer). Detected by chemiluminescence.



EB07295 Immunofluorescence analysis of paraformaldehyde fixed HeLa cells, permeabilized with 0.15% Triton. Primary incubation 1hr (10ug/ml) followed by Alexa Fluor 488 secondary antibody (4ug/ml), showing cytoplasmic staining. The nuclear stain is DAPI (blue). Negative control: Unimmunized goat IgG (10ug/ml) followed by Alexa Fluor 488 secondary antibody (4ug/ml).



EB07295 (5µg/ml) staining of paraffin embedded Human Prostate. Steamed antigen retrieval with citrate buffer pH 6, AP-staining.