

## UK Office

### Everest Biotech Ltd

Cherwell Innovation Centre  
77 Heyford Park  
Upper Heyford  
Oxfordshire  
OX25 5HD  
UK

Enquiries:

[info@everestbiotech.com](mailto:info@everestbiotech.com)

Sales:

[sales@everestbiotech.com](mailto:sales@everestbiotech.com)

Tech support:

[support@everestbiotech.com](mailto:support@everestbiotech.com)

Tel: +44 (0)1869 238326

Fax: +44 (0)1869 238327

## US Office

### Everest Biotech c/o Abcore

405 Maple Street, Suite A106  
Ramona,  
CA 92065  
USA

Inquiries:

[info@everestbiotech.com](mailto:info@everestbiotech.com)

Sales:

[usasales@everestbiotech.com](mailto:usasales@everestbiotech.com)

Tech support:

[support@everestbiotech.com](mailto:support@everestbiotech.com)

Tel: 888-320-4628 (toll-free)

Fax: 888-841-9041

[www.everestbiotech.com](http://www.everestbiotech.com)

**Research Use Only. Not for  
diagnostic or therapeutic use.**

## EB11006 - Goat Anti-Htr1a (mouse) Antibody

Size: 100µg specific antibody in 200µl



## Target Protein

**Principal Names:** Htr1a, 5-hydroxytryptamine (serotonin) receptor 1A, Gpcr18, 5-HT-1A, 5-HT1A receptor, 5-hydroxytryptamine receptor 1A, G-protein coupled receptor 18, serotonin receptor 1A, 5-HT-1A, 5-HT1A receptor, 5-hydroxytryptamine (serotonin) receptor 1A, 5-hydroxytryptamine receptor 1A, Gpcr18, G-protein coupled receptor 18, serotonin receptor 1A, Htr1a

**Official Symbol:** Htr1a

**Accession Number(s):** NP\_032334.2

**Human GeneID(s):** [3350](#)

**Non-Human GeneID(s):** 15550 (mouse), 24473 (rat)

## Immunogen

Peptide with sequence C-ERKNERTAEAKRK, from the internal region of the protein sequence according to NP\_032334.2.

Please note the [peptide](#) is available for sale.

## Purification and Storage

Purified from goat serum by ammonium sulphate precipitation followed by antigen affinity chromatography using the immunizing peptide.

Supplied at 0.5 mg/ml in Tris saline, 0.02% sodium azide, pH7.3 with 0.5% bovine serum albumin.

Aliquot and store at -20°C. Minimize freezing and thawing.

## Applications Tested

**Peptide ELISA:** antibody detection limit dilution 1:128000.

**Western blot:** Approx 45kDa band observed in Mouse Brain lysates (calculated MW of 46.2kDa according to Mouse NP\_032334.2). Recommended concentration: 1-3µg/ml. Additional bands of 75 and 18kDa of unknown identity were consistently observed. These bands were successfully blocked by incubation with the immunizing peptide. Primary incubation was 1 hour. Preliminary testing was unsuccessful on Rat Brain for this particular batch.

## Species Reactivity

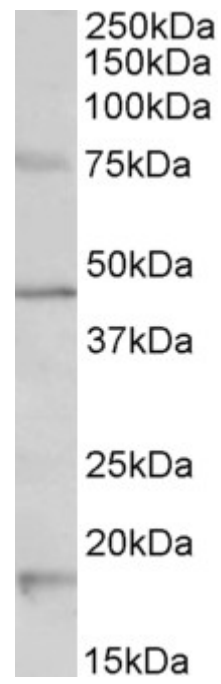
**Tested:** Human, Mouse

**Expected from sequence similarity:** Human, Mouse, Rat

## Specific Reference

**This antibody has been successfully used in Western blot on Human:**

Cordeaux Y, Pasupathy D, Bacon J, Charnock-Jones DS, Smith GC.  
Characterization of serotonin receptors in pregnant human myometrium.  
J Pharmacol Exp Ther. 2009 Mar;328(3):682-91.  
PMID: 19075042



EB11006 (1 $\mu$ g/ml) staining of Mouse Brain lysate (35 $\mu$ g protein in RIPA buffer). Detected by chemiluminescence.