



UK Office

Everest Biotech Ltd

Cherwell Innovation Centre
77 Heyford Park
Upper Heyford
Oxfordshire
OX25 5HD
UK

Enquiries:

info@everestbiotech.com

Sales:

sales@everestbiotech.com

Tech support:

support@everestbiotech.com

Tel: +44 (0)1869 238326

Fax: +44 (0)1869 238327

US Office

Everest Biotech c/o Abcore

405 Maple Street, Suite A106
Ramona,
CA 92065
USA

Inquiries:

info@everestbiotech.com

Sales:

usasales@everestbiotech.com

Tech support:

support@everestbiotech.com

Tel: 888-320-4628 (toll-free)

Fax: 888-841-9041

www.everestbiotech.com

**Research Use Only. Not for
diagnostic or therapeutic use.**

EB13101 - Goat Anti-Human C-reactive protein antibody (HRP) Antibody

Size: 100µg specific antibody in 200µl



Target Protein

Principal Names: C-reactive protein, CRP, PTX1

Official Symbol: CRP

Accession Number(s): NP_000558.2

Human GeneID(s): [1401](#)

Important Comments: 0.2mg in 0.5mg/ml

Immunogen

Peptide with sequence Purified Human C reactive protein, from the N/A of the protein sequence according to NP_000558.2.

Purification and Storage

Purified from goat serum by ammonium sulphate precipitation followed by antigen affinity chromatography using the immunizing peptide.

Phosphate buffer saline, PH 7.3, with 0.02% sodium azide as preservative.

Aliquot and store at -20°C. Minimize freezing and thawing.

Applications Tested

Peptide ELISA: antibody detection limit dilution 1:128000.

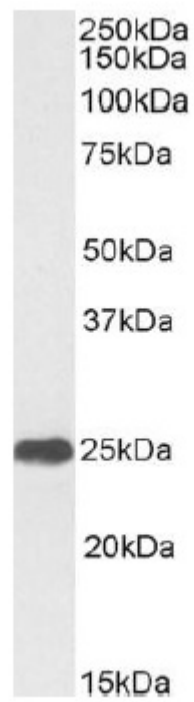
Western blot: Approx. 25kDa band observed in Human Liver and Serum Lysates.

Recommended concentration: 0.3µg/ml. Primary incubation was 1 hour.

Species Reactivity

Tested: Human

Expected from sequence similarity: Human



EB13101 (0.3 μ g/ml) staining of Human Liver lysate (35 μ g protein in RIPA buffer). Detected by chemiluminescence at 3 min exposure.