



UK Office

Everest Biotech Ltd

Cherwell Innovation Centre
77 Heyford Park
Upper Heyford
Oxfordshire
OX25 5HD
UK

Enquiries:

info@everestbiotech.com

Sales:

sales@everestbiotech.com

Tech support:

support@everestbiotech.com

Tel: +44 (0)1869 238326

Fax: +44 (0)1869 238327

US Office

Everest Biotech c/o Abcore

405 Maple Street, Suite A106
Ramona,
CA 92065
USA

Inquiries:

info@everestbiotech.com

Sales:

usasales@everestbiotech.com

Tech support:

support@everestbiotech.com

Tel: 888-320-4628 (toll-free)

Fax: 888-841-9041

www.everestbiotech.com

**Research Use Only. Not for
diagnostic or therapeutic use.**

EB07020 - Goat Anti-HVEM / TR2 Antibody

Size: 100µg specific antibody in 200µl



Target Protein

Principal Names: HVEM, TR2, TNFRSF14, tumor necrosis factor receptor superfamily, member 14 (herpesvirus entry mediator), HGNC:11912, ATAR, HVEA, LIGHTR, CD40-like protein precursor, herpesvirus entry mediator, herpesvirus entry mediator A, tumor necrosis factor receptor superfamily, member 14, tumor necrosis factor receptor-like gene2

Official Symbol: TNFRSF14

Accession Number(s): NP_003811.2

Human GeneID(s): [8764](#)

Immunogen

Peptide with sequence C-SVQRKRQEAEGE, from the internal region of the protein sequence according to NP_003811.2.

Please note the [peptide](#) is available for sale.

Purification and Storage

Purified from goat serum by ammonium sulphate precipitation followed by antigen affinity chromatography using the immunizing peptide.

Supplied at 0.5 mg/ml in Tris saline, 0.02% sodium azide, pH7.3 with 0.5% bovine serum albumin.

Aliquot and store at -20°C. Minimize freezing and thawing.

Applications Tested

Peptide ELISA: antibody detection limit dilution 1:32000.

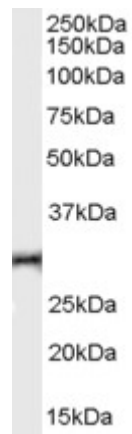
Western blot: Approx 30kDa band observed in Human Thymus and Tonsil lysates (calculated MW of 30.4kDa according to NP_003811.2). Recommended concentration: 0.03-0.1 µg/ml.

IHC: Paraffin embedded Human Kidney. Recommended concentration: 5µg/ml.

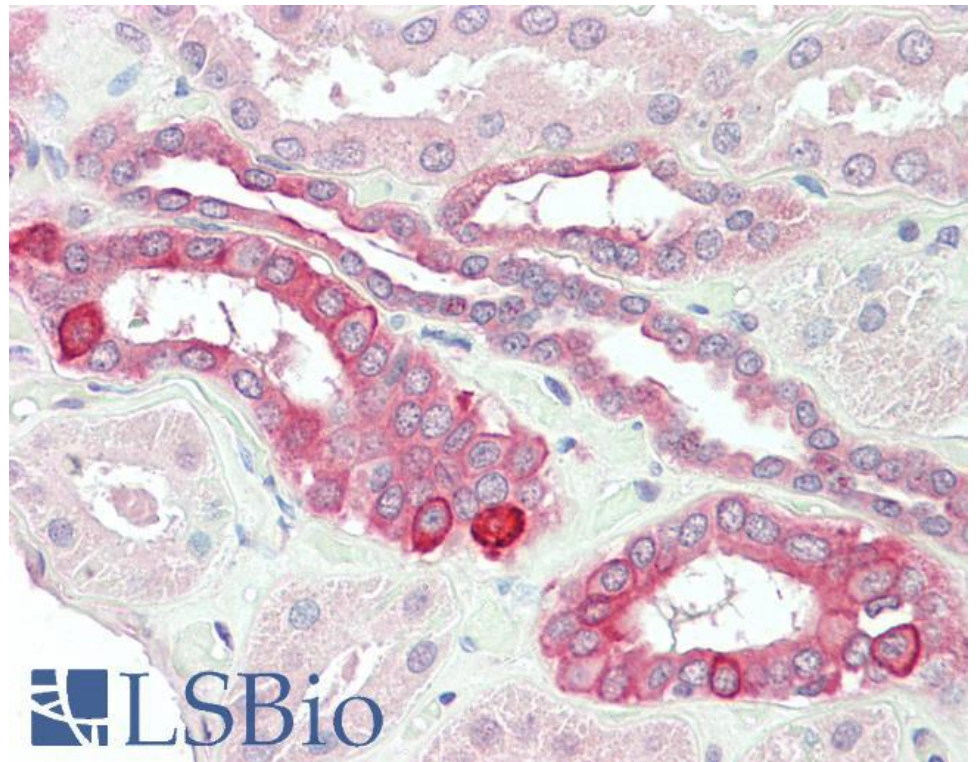
Species Reactivity

Tested: Human

Expected from sequence similarity: Human



EB07020 (0.03µg/ml) staining of Human Thymus lysate (35µg protein in RIPA buffer). Primary incubation was 1 hour. Detected by chemiluminescence.



EB07020 (5µg/ml) staining of paraffin embedded Human Kidney. Steamed antigen retrieval with citrate buffer pH 6, AP-staining.