

UK Office

Everest Biotech Ltd

Cherwell Innovation Centre
77 Heyford Park
Upper Heyford
Oxfordshire
OX25 5HD
UK

Enquiries:

info@everestbiotech.com

Sales:

sales@everestbiotech.com

Tech support:

support@everestbiotech.com

Tel: +44 (0)1869 238326

www.everestbiotech.com

**Research Use Only. Not for
diagnostic or therapeutic use.**

EB11754 - Goat Anti-ICAM1 (aa313-327) Antibody

Size: 100µg specific antibody in 200µl



Target Protein

Principal Names: BB2, CD54, cell surface glycoprotein P3.58, human rhinovirus receptor, ICAM1, ICAM-1, intercellular adhesion molecule 1, intercellular adhesion molecule 1 (CD54), human rhinovirus receptor, major group rhinovirus receptor, P3.58

Official Symbol: ICAM1

Accession Number(s): NP_000192.2

Human GeneID(s): [3383](#)

Important Comments: The immunizing peptide represents part of the extracellular domain, and it does not overlap any known glycosite..

Immunogen

Peptide with sequence C-PNVILTKPEVSEGTE, from the internal region of the protein sequence according to NP_000192.2.

Please note the [peptide](#) is available for sale.

Purification and Storage

Purified from goat serum by ammonium sulphate precipitation followed by antigen affinity chromatography using the immunizing peptide.

Supplied at 0.5 mg/ml in Tris saline, 0.02% sodium azide, pH7.3 with 0.5% bovine serum albumin.

Aliquot and store at -20°C. Minimize freezing and thawing.

Applications Tested

Peptide ELISA: antibody detection limit dilution 1:128000.

Western blot: Approx 100kDa band observed in Human Lung lysates (calculated MW of 57.8kDa according to Human NP_000192.2). This molecular weight is routinely observed by other sources. Recommended concentration: 0.1-0.3µg/ml. Primary incubation 1 hour at room temperature.

Immunofluorescence: Strong expression of the protein seen in the cytoplasm of A431 cells Recommended concentration: 10µg/ml.

Flow Cytometry: Flow cytometric analysis of Jurkat cells and Human peripheral blood monocytes. Recommended concentration: 10ug/ml.

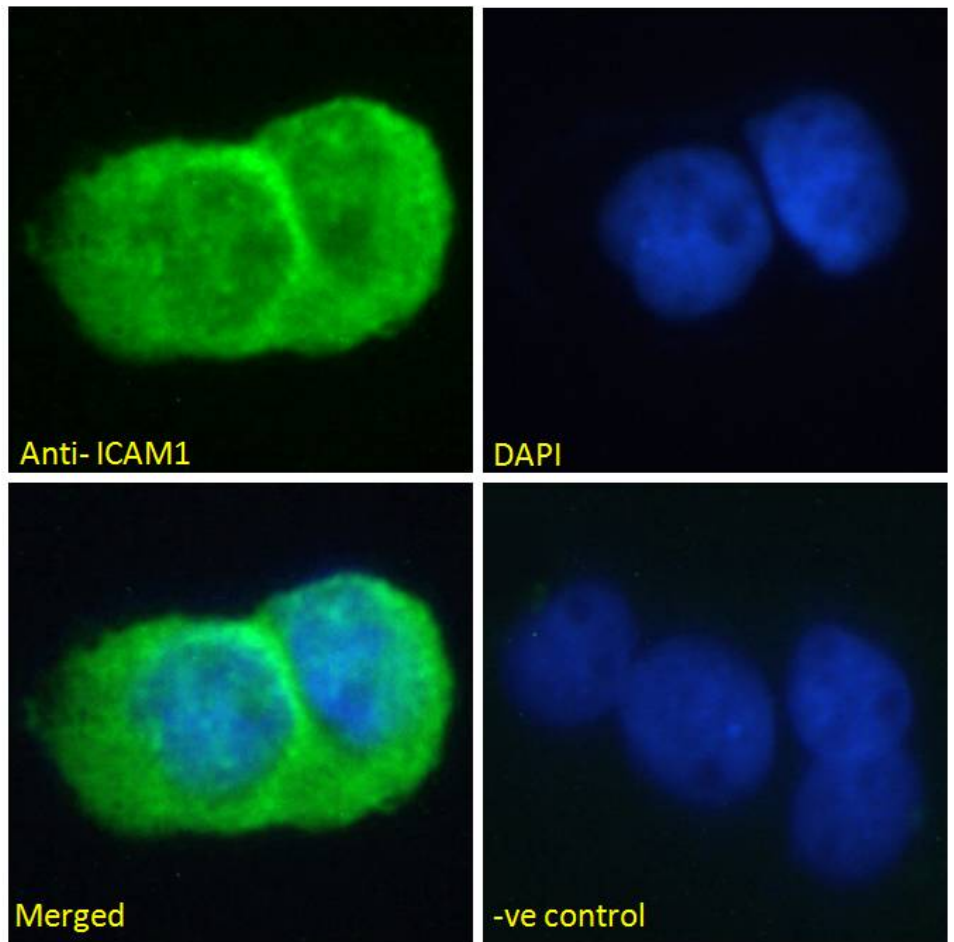
Species Reactivity

Tested: Human

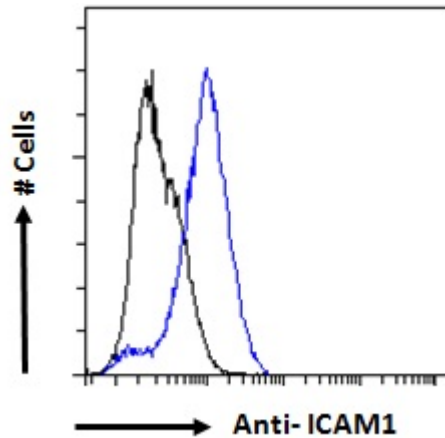
Expected from sequence similarity: Human



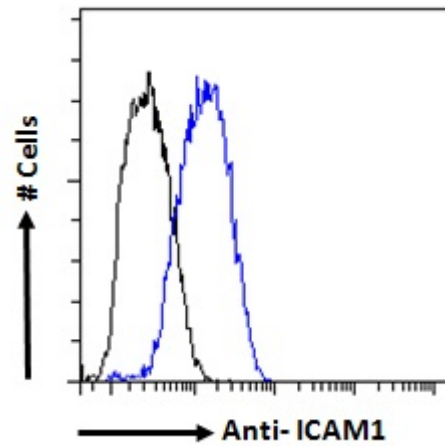
EB11754 (0.3µg/ml) staining of Human Lung lysate (35µg protein in RIPA buffer). Detected by chemiluminescence.



EB11754 Immunofluorescence analysis of paraformaldehyde fixed A431 cells, permeabilized with 0.15% Triton. Primary incubation 1hr (10ug/ml) followed by Alexa Fluor 488 secondary antibody (2ug/ml), showing cytoplasmic staining. The nuclear stain is DAPI (blue). Negative control: Unimmunized goat IgG (10ug/ml) followed by Alexa Fluor 488 secondary antibody (2ug/ml).



EB11754 Flow cytometric analysis of paraformaldehyde fixed Jurkat cells (blue line), permeabilized with 0.5% Triton. Primary incubation 1hr (10ug/ml) followed by Alexa Fluor 488 secondary antibody (1ug/ml). IgG control: Unimmunized goat IgG (black line) followed by Alexa Fluor 488 secondary antibody.



EB11754 Flow cytometric analysis of paraformaldehyde fixed human peripheral blood monocytes (blue line), permeabilized with 0.5% Triton. Primary incubation 1hr (10ug/ml) followed by Alexa Fluor 488 secondary antibody (1ug/ml). IgG control: Unimmunized goat IgG (black line) followed by Alexa Fluor 488 secondary antibody.