



## UK Office

### Everest Biotech Ltd

Cherwell Innovation Centre  
77 Heyford Park  
Upper Heyford  
Oxfordshire  
OX25 5HD  
UK

Enquiries:

[info@everestbiotech.com](mailto:info@everestbiotech.com)

Sales:

[sales@everestbiotech.com](mailto:sales@everestbiotech.com)

Tech support:

[support@everestbiotech.com](mailto:support@everestbiotech.com)

Tel: +44 (0)1869 238326

Fax: +44 (0)1869 238327

## US Office

### Everest Biotech c/o Abcore

405 Maple Street, Suite A106  
Ramona,  
CA 92065  
USA

Inquiries:

[info@everestbiotech.com](mailto:info@everestbiotech.com)

Sales:

[usasales@everestbiotech.com](mailto:usasales@everestbiotech.com)

Tech support:

[support@everestbiotech.com](mailto:support@everestbiotech.com)

Tel: 888-320-4628 (toll-free)

Fax: 888-841-9041

[www.everestbiotech.com](http://www.everestbiotech.com)

**Research Use Only. Not for  
diagnostic or therapeutic use.**

## EB09484 - Goat Anti-ICOS Antibody

Size: 100µg specific antibody in 200µl



### Target Protein

**Principal Names:** ICOS, inducible T-cell co-stimulator, AILIM, CD278, MGC39850, activation-inducible lymphocyte immunomediatory molecule, inducible costimulator

**Official Symbol:** ICOS

**Accession Number(s):** NP\_036224.1

**Human GeneID(s):** [29851](#)

**Non-Human GeneID(s):** 54167 (mouse)

### Immunogen

Peptide with sequence KGGQILCDLTKTKGS, from the internal region of the protein sequence according to NP\_036224.1.

Please note the [peptide](#) is available for sale.

### Purification and Storage

Purified from goat serum by ammonium sulphate precipitation followed by antigen affinity chromatography using the immunizing peptide.

Supplied at 0.5 mg/ml in Tris saline, 0.02% sodium azide, pH7.3 with 0.5% bovine serum albumin.

Aliquot and store at -20°C. Minimize freezing and thawing.

### Applications Tested

**Peptide ELISA:** antibody detection limit dilution 1:32000.

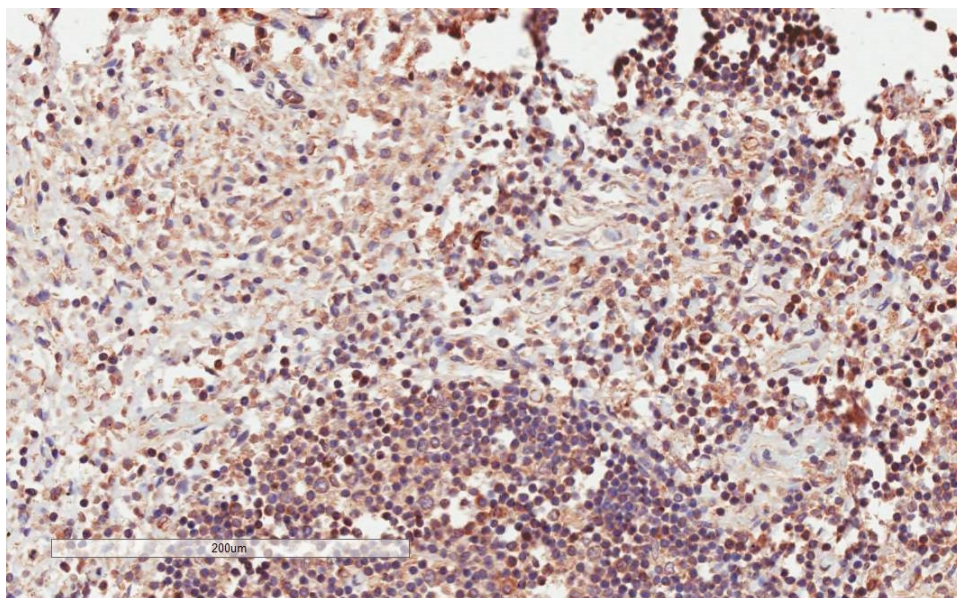
**Western blot:** Preliminary experiments gave an approx 13kDa band in Human Peripheral Blood Lymphocyte lysates after 0.01µg/ml antibody staining. Please note that currently we cannot find an explanation in the literature for the band we observe given the calculated size of 22.6kDa according to NP\_036224.1. The 13kDa band was successfully blocked by incubation with the immunizing peptide.

**IHC:** In paraffin embedded Human Lymph Node shows membrane staining just outside the mantle zone of the Germinal Centre. Recommended concentration: 1-2µg/ml. Paraffin embedded Human Tonsil and Thymus. Recommended concentration: 3.75µg/ml.

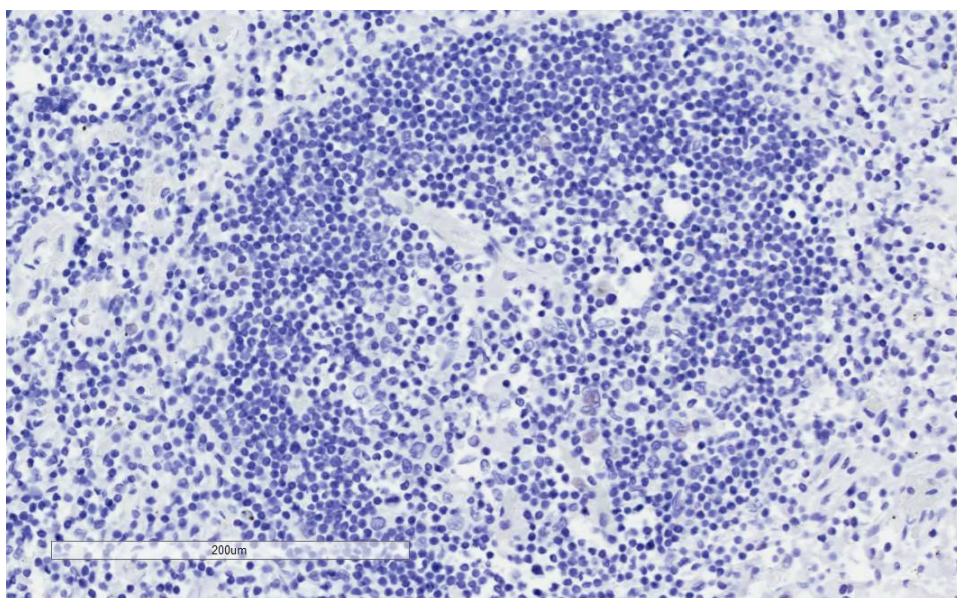
### Species Reactivity

**Tested:** Human

**Expected from sequence similarity:** Human

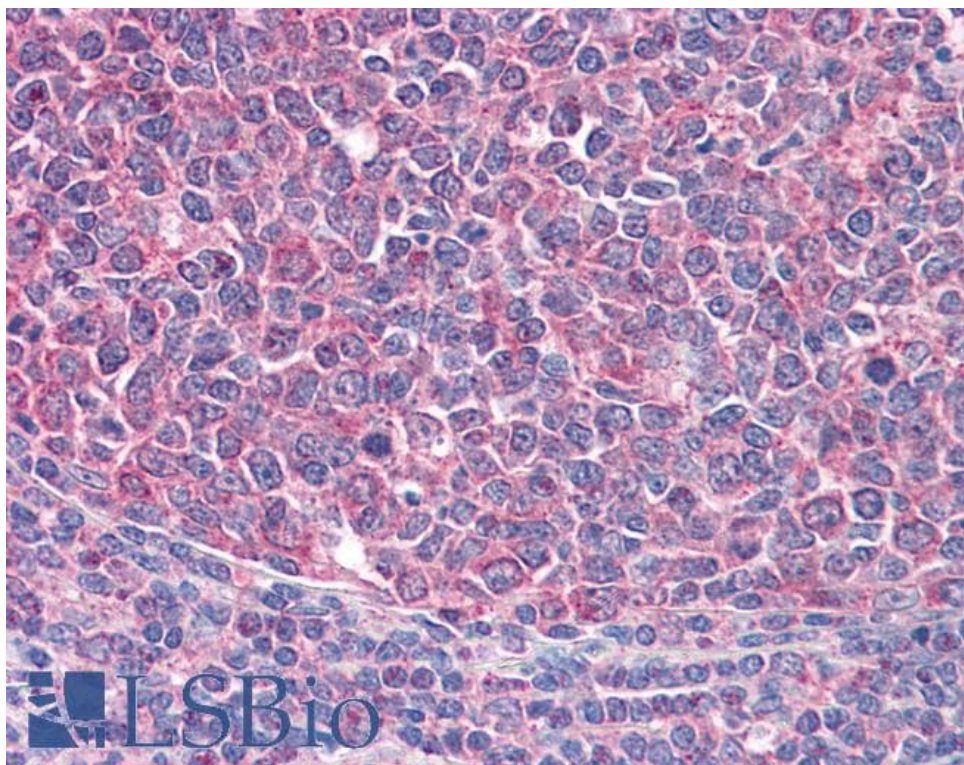


EB09484 (2μg/ml) staining of paraffin embedded Human Lymph Node. Microwaved antigen retrieval with citrate buffer pH 6, HRP-staining.

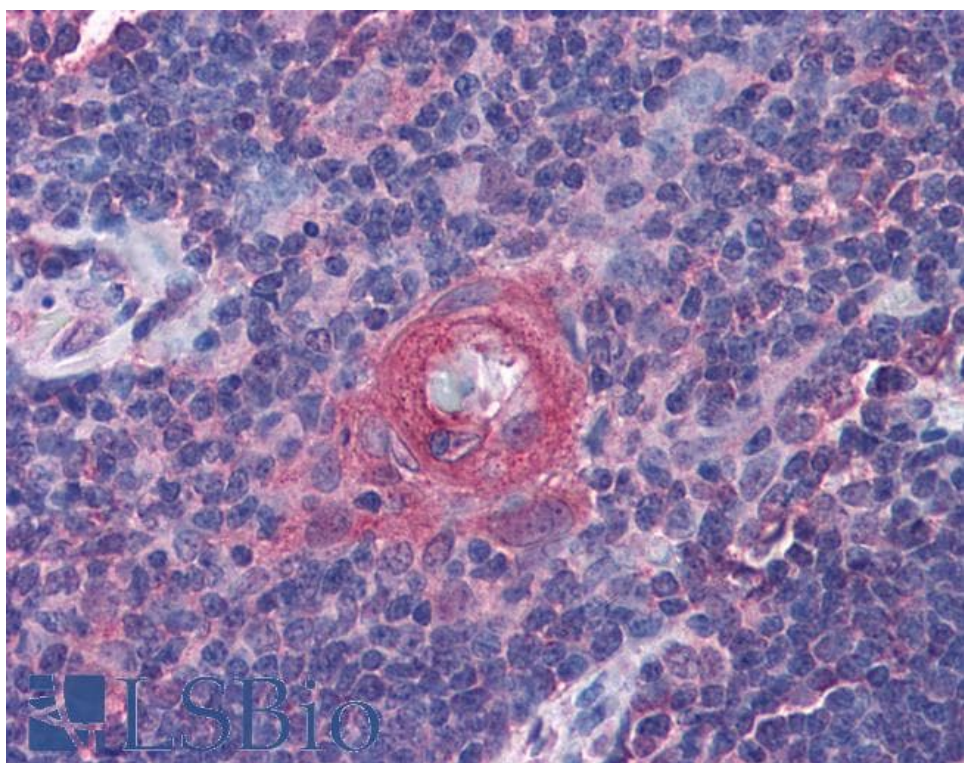


EB09484 Negative Control showing staining of paraffin embedded Human Lymph Node, with no primary antibody.





EB09484 (3.75µg/ml) staining of paraffin embedded Human Tonsil. Steamed antigen retrieval with citrate buffer pH 6, AP-staining.



EB09484 (3.75µg/ml) staining of paraffin embedded Human Thymus. Steamed antigen retrieval with citrate buffer pH 6, AP-staining.