



## UK Office

### Everest Biotech Ltd

Cherwell Innovation Centre  
77 Heyford Park  
Upper Heyford  
Oxfordshire  
OX25 5HD  
UK

Enquiries:

[info@everestbiotech.com](mailto:info@everestbiotech.com)

Sales:

[sales@everestbiotech.com](mailto:sales@everestbiotech.com)

Tech support:

[support@everestbiotech.com](mailto:support@everestbiotech.com)

Tel: +44 (0)1869 238326

[www.everestbiotech.com](http://www.everestbiotech.com)

**Research Use Only. Not for  
diagnostic or therapeutic use.**

## EB12839 - Goat Anti-ICOS ligand / B7-H2 Antibody

Size: 100µg specific antibody in 200µl

### Target Protein

**Principal Names:** ICOSLG, inducible T-cell co-stimulator ligand, B7-H2, B7H2, B7RP-1, B7RP1, CD275, GL50, ICOS-L, ICOSL, LICOS, B7 homolog 2, B7 homologue 2, B7-like protein GI50, B7-related protein 1, ICOS ligand, transmembrane protein B7-H2 ICOS ligand

**Official Symbol:** ICOSLG

**Accession Number(s):** NP\_056074.1; NP\_001269979.1; NP\_001269980.1; NP\_001269981.1

**Human GeneID(s):** [23308](#)

**Important Comments:** This antibody is expected to recognize all reported isoforms (NP\_056074.1; NP\_001269979.1; NP\_001269980.1; NP\_001269981.1).

### Immunogen

Peptide with sequence C-SQTGNDIGERDKIT, from the internal region of the protein sequence according to NP\_056074.1; NP\_001269979.1; NP\_001269980.1; NP\_001269981.1.

Please note the [peptide](#) is available for sale.

### Purification and Storage

Purified from goat serum by ammonium sulphate precipitation followed by antigen affinity chromatography using the immunizing peptide.

Supplied at 0.5 mg/ml in Tris saline, 0.02% sodium azide, pH7.3 with 0.5% bovine serum albumin.

Aliquot and store at -20°C. Minimize freezing and thawing.

### Applications Tested

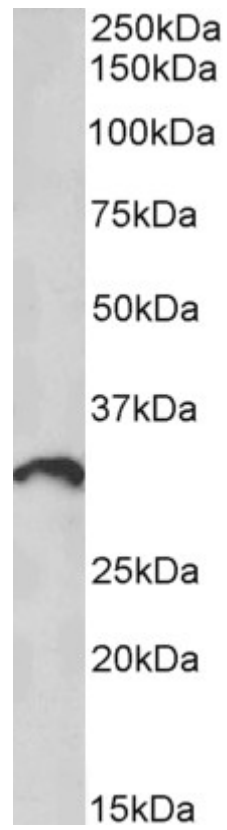
**Peptide ELISA:** antibody detection limit dilution 1:8000.

**Western blot:** Approx 33kDa band observed in Human Lymph Node lysates (calculated MW of 33.3kDa according to NP\_056074.1). Recommended concentration: 1-3µg/ml.

### Species Reactivity

**Tested:** Human

**Expected from sequence similarity:** Human



EB12839 (1 $\mu$ g/ml) staining of Human Lymph Node lysate (35 $\mu$ g protein in RIPA buffer). Primary incubation was 1 hour. Detected by chemiluminescence.