



## UK Office

### Everest Biotech Ltd

Cherwell Innovation Centre  
77 Heyford Park  
Upper Heyford  
Oxfordshire  
OX25 5HD  
UK

Enquiries:

[info@everestbiotech.com](mailto:info@everestbiotech.com)

Sales:

[sales@everestbiotech.com](mailto:sales@everestbiotech.com)

Tech support:

[support@everestbiotech.com](mailto:support@everestbiotech.com)

Tel: +44 (0)1869 238326

[www.everestbiotech.com](http://www.everestbiotech.com)

**Research Use Only. Not for  
diagnostic or therapeutic use.**

## EB10652 - Goat Anti-IDH1 (yeast) Antibody

Size: 100µg specific antibody in 200µl



### Target Protein

**Principal Names:** IDH1, Idh1p, YNL037C, Subunit of mitochondrial NAD(+)-dependent isocitrate dehydrogenase, which catalyzes the oxidation of isocitrate to alpha-ketoglutarate in the TCA cycle

**Official Symbol:** IDH1

**Accession Number(s):** NP\_014361.1

### Immunogen

Peptide with sequence C-EPGSRHVGLDIKGQN, from the internal region of the protein sequence according to NP\_014361.1.

Please note the [peptide](#) is available for sale.

### Purification and Storage

Purified from goat serum by ammonium sulphate precipitation followed by antigen affinity chromatography using the immunizing peptide.

Supplied at 0.5 mg/ml in Tris saline, 0.02% sodium azide, pH7.3 with 0.5% bovine serum albumin.

Aliquot and store at -20°C. Minimize freezing and thawing.

### Applications Tested

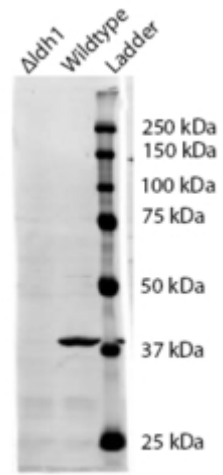
**Peptide ELISA:** antibody detection limit dilution 1:16000.

**Western blot:** Approx 38kDa band observed in wildtype lysates of *S.cerevisiae* (calculated MW of 39.3kDa according to NP\_014361.1). Recommended concentration: 0.3-1µg/ml.

### Species Reactivity

**Tested:** *S.cerevisiae* S288c

**Expected from sequence similarity:** *Saccharomyces cerevisiae*



EB10652 (0.5 $\mu$ g/ml) staining of *S. cerevisiae* S288c lysate (35 $\mu$ g protein in RIPA buffer). Primary incubation was 1 hour. Detected by chemiluminescence. The blocking buffer contained non-animal derived protein. Data kindly provided by Dr. F Reggiori, University of Utrecht, Netherlands