



UK Office

Everest Biotech Ltd

Cherwell Innovation Centre
77 Heyford Park
Upper Heyford
Oxfordshire
OX25 5HD
UK

Enquiries:

info@everestbiotech.com

Sales:

sales@everestbiotech.com

Tech support:

support@everestbiotech.com

Tel: +44 (0)1869 238326

Fax: +44 (0)1869 238327

US Office

Everest Biotech c/o Abcore

405 Maple Street, Suite A106
Ramona,
CA 92065
USA

Inquiries:

info@everestbiotech.com

Sales:

usasales@everestbiotech.com

Tech support:

support@everestbiotech.com

Tel: 888-320-4628 (toll-free)

Fax: 888-841-9041

www.everestbiotech.com

**Research Use Only. Not for
diagnostic or therapeutic use.**

EB10652 - Goat Anti-IDH1 (yeast) Antibody

Size: 100µg specific antibody in 200µl



Target Protein

Principal Names: IDH1, Idh1p, YNL037C, Subunit of mitochondrial NAD(+)-dependent isocitrate dehydrogenase, which catalyzes the oxidation of isocitrate to alpha-ketoglutarate in the TCA cycle

Official Symbol: IDH1

Accession Number(s): NP_014361.1

Immunogen

Peptide with sequence C-EPGSRHVGLDIKGQN, from the internal region of the protein sequence according to NP_014361.1.

Please note the [peptide](#) is available for sale.

Purification and Storage

Purified from goat serum by ammonium sulphate precipitation followed by antigen affinity chromatography using the immunizing peptide.

Supplied at 0.5 mg/ml in Tris saline, 0.02% sodium azide, pH7.3 with 0.5% bovine serum albumin.

Aliquot and store at -20°C. Minimize freezing and thawing.

Applications Tested

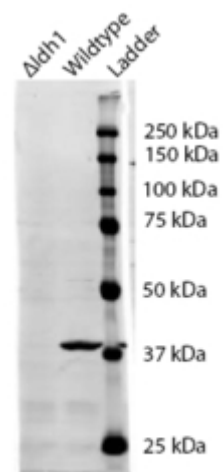
Peptide ELISA: antibody detection limit dilution 1:16000.

Western blot: Approx 38kDa band observed in wildtype lysates of *S.cerevisiae* (calculated MW of 39.3kDa according to NP_014361.1). Recommended concentration: 0.3-1µg/ml.

Species Reactivity

Tested: *S.cerevisiae* S288c

Expected from sequence similarity: *Saccharomyces cerevisiae*



EB10652 (0.5µg/ml) staining of *S. cerevisiae* S288c lysate (35µg protein in RIPA buffer). Primary incubation was 1 hour. Detected by chemiluminescence. The blocking buffer contained non-animal derived protein. Data kindly provided by Dr. F Reggiori, University of Utrecht, Netherlands