



UK Office

Everest Biotech Ltd

Cherwell Innovation Centre
77 Heyford Park
Upper Heyford
Oxfordshire
OX25 5HD
UK

Enquiries:

info@everestbiotech.com

Sales:

sales@everestbiotech.com

Tech support:

support@everestbiotech.com

Tel: +44 (0)1869 238326

Fax: +44 (0)1869 238327

US Office

Everest Biotech c/o Abcore

405 Maple Street, Suite A106
Ramona,
CA 92065
USA

Inquiries:

info@everestbiotech.com

Sales:

usasales@everestbiotech.com

Tech support:

support@everestbiotech.com

Tel: 888-320-4628 (toll-free)

Fax: 888-841-9041

www.everestbiotech.com

**Research Use Only. Not for
diagnostic or therapeutic use.**

EB10529 - Goat Anti-IDH2 Antibody

Size: 100µg specific antibody in 200µl



Target Protein

Principal Names: ICD-M, IDH, IDHM, IDP, IDPM, isocitrate dehydrogenase 2 (NADP+), mitochondrial, isocitrate dehydrogenase, mitochondrial, mNADP-IDH, NADP+-specific ICDH, oxalosuccinate decarboxylase, IDH2

Official Symbol: IDH2

Accession Number(s): NP_002159.2

Human GeneID(s): [3418](#)

Non-Human GeneID(s): 269951 (mouse), 361596 (rat)

Immunogen

Peptide with sequence CIHGLSNVKLNE, from the internal region of the protein sequence according to NP_002159.2.

Please note the [peptide](#) is available for sale.

Purification and Storage

Purified from goat serum by ammonium sulphate precipitation followed by antigen affinity chromatography using the immunizing peptide.

Supplied at 0.5 mg/ml in Tris saline, 0.02% sodium azide, pH7.3 with 0.5% bovine serum albumin.

Aliquot and store at -20°C. Minimize freezing and thawing.

Applications Tested

Peptide ELISA: antibody detection limit dilution 1:16000.

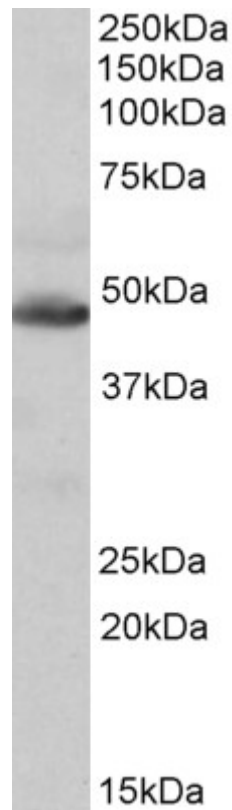
Western blot: Approx 48kDa band observed in Mouse, Rat and Pig Heart lysates (calculated MW of 50.9kDa according to Mouse NP_766599.2). Recommended concentration: 0.1-0.3µg/ml. Primary incubation was 1 hour.

IHC: Paraffin embedded Human Skeletal Muscle. Recommended concentration: 3.75µg/ml.

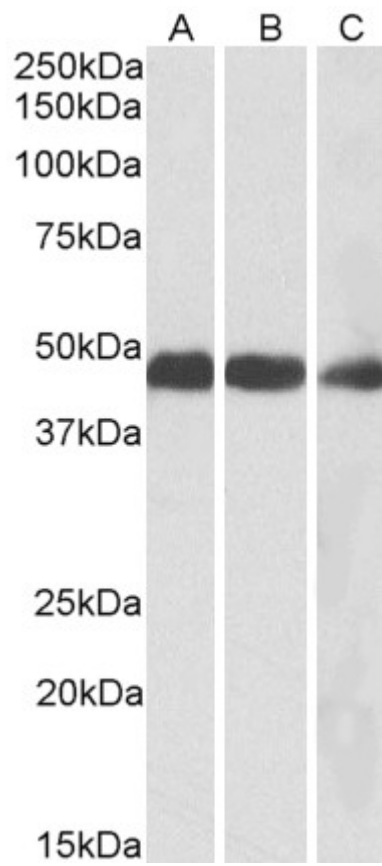
Species Reactivity

Tested: Human, Mouse, Rat, Pig

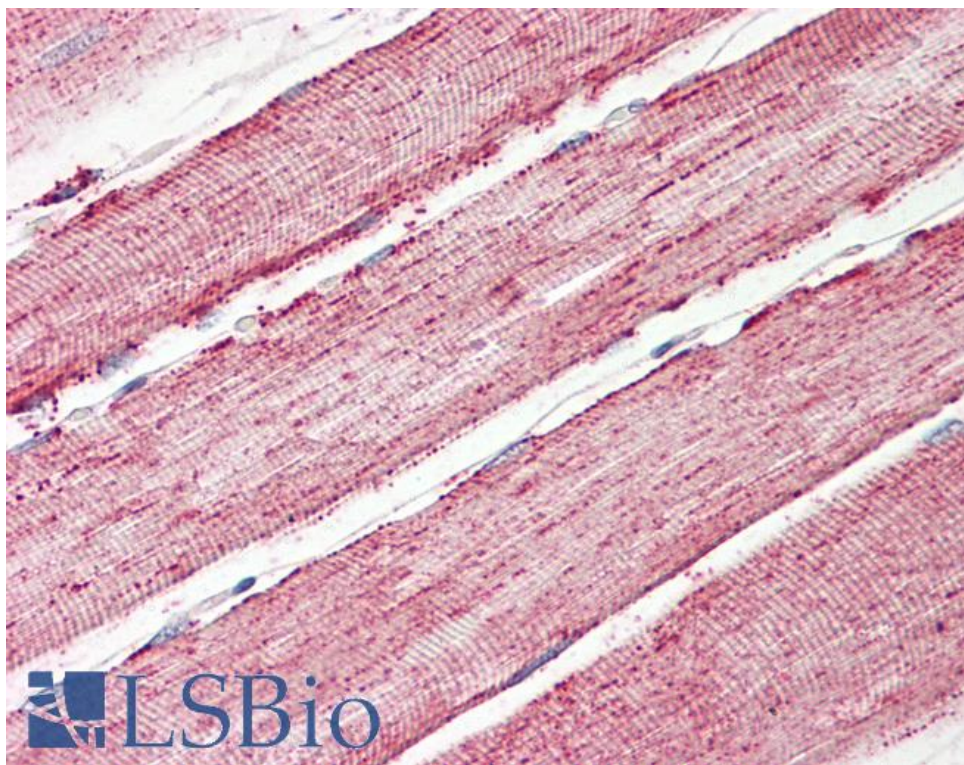
Expected from sequence similarity: Human, Mouse, Rat, Dog, Cow, Pig



EB10529 (0.1µg/ml) staining of Human Heart lysate (35µg protein in RIPA buffer). Detected by chemiluminescence.



EB10529 (0.1µg/ml) staining of Mouse (A), Rat (B) and Pig (C) Heart lysates (35µg protein in RIPA buffer). Detected by chemiluminescence.



EB10529 (3.75µg/ml) staining of paraffin embedded Human Skeletal Muscle. Steamed antigen retrieval with citrate buffer pH 6, AP-staining.