



## UK Office

### Everest Biotech Ltd

Cherwell Innovation Centre  
77 Heyford Park  
Upper Heyford  
Oxfordshire  
OX25 5HD  
UK

Enquiries:

[info@everestbiotech.com](mailto:info@everestbiotech.com)

Sales:

[sales@everestbiotech.com](mailto:sales@everestbiotech.com)

Tech support:

[support@everestbiotech.com](mailto:support@everestbiotech.com)

Tel: +44 (0)1869 238326

[www.everestbiotech.com](http://www.everestbiotech.com)

**Research Use Only. Not for  
diagnostic or therapeutic use.**

## EB08984 - Goat Anti-IDS Antibody

Size: 100µg specific antibody in 200µl



### Target Protein

**Principal Names:** IDS, iduronate 2-sulfatase (Hunter syndrome), MPS2, SIDS, iduronate-2-sulfatase

**Official Symbol:** IDS

**Accession Number(s):** NP\_000193.1

**Human GeneID(s):** [3423](#)

**Important Comments:** This antibody is expected to recognize isoform a (NP\_000193.1).

### Immunogen

Peptide with sequence C-KHFRFRDLEEDP, from the internal region of the protein sequence according to NP\_000193.1.

Please note the [peptide](#) is available for sale.

### Purification and Storage

Purified from goat serum by ammonium sulphate precipitation followed by antigen affinity chromatography using the immunizing peptide.

Supplied at 0.5 mg/ml in Tris saline, 0.02% sodium azide, pH7.3 with 0.5% bovine serum albumin.

Aliquot and store at -20°C. Minimize freezing and thawing.

### Applications Tested

**Peptide ELISA:** antibody detection limit dilution 1:16000.

**Western blot:** Approx. 60kDa band observed in Human Liver lysates (calculated MW of 61.9kDa according to NP\_000193.1). Recommended concentration: 0.1-0.3µg/ml.

**IHC:** In paraffin embedded Human Placenta shows lysosomal staining of trophoblasts. Recommended concentration: 3-5µg/ml.

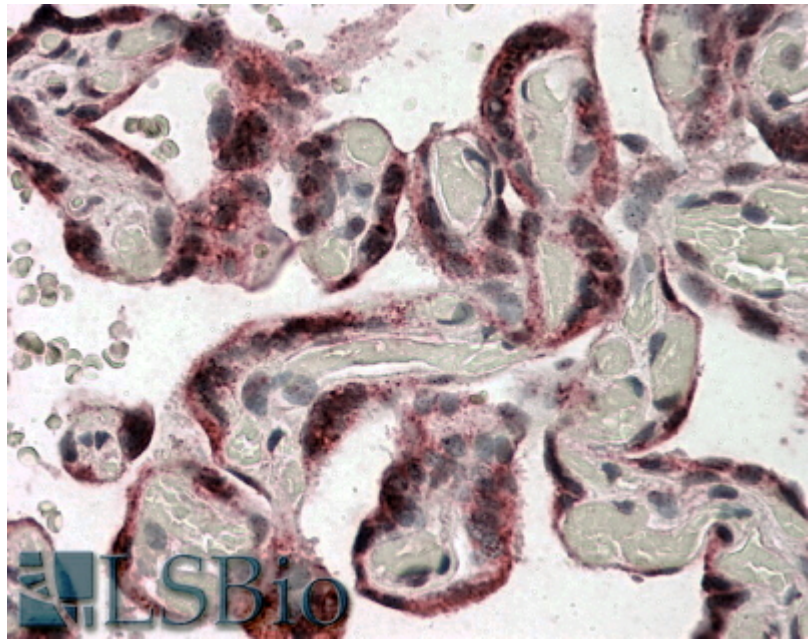
### Species Reactivity

**Tested:** Human

**Expected from sequence similarity:** Human

250kDa  
150kDa  
100kDa  
75kDa  
50kDa  
37kDa  
25kDa  
20kDa  
15kDa

EB08984 (0.1 $\mu$ g/ml) staining of Human Liver lysate (35 $\mu$ g protein in RIPA buffer). Primary incubation was 1 hour.  
Detected by chemiluminescence.



EB08984 (3.8 $\mu$ g/ml) staining of paraffin embedded Human Placenta. Steamed antigen retrieval with citrate buffer pH 6, AP-staining.