



UK Office

Everest Biotech Ltd

Cherwell Innovation Centre
77 Heyford Park
Upper Heyford
Oxfordshire
OX25 5HD
UK

Enquiries:

info@everestbiotech.com

Sales:

sales@everestbiotech.com

Tech support:

support@everestbiotech.com

Tel: +44 (0)1869 238326

Fax: +44 (0)1869 238327

US Office

Everest Biotech c/o Abcore

405 Maple Street, Suite A106
Ramona,
CA 92065
USA

Inquiries:

info@everestbiotech.com

Sales:

usasales@everestbiotech.com

Tech support:

support@everestbiotech.com

Tel: 888-320-4628 (toll-free)

Fax: 888-841-9041

www.everestbiotech.com

**Research Use Only. Not for
diagnostic or therapeutic use.**

EB08984 - Goat Anti-IDS Antibody

Size: 100µg specific antibody in 200µl



Target Protein

Principal Names: IDS, iduronate 2-sulfatase (Hunter syndrome), MPS2, SIDS, iduronate-2-sulfatase

Official Symbol: IDS

Accession Number(s): NP_000193.1

Human GeneID(s): [3423](#)

Important Comments: This antibody is expected to recognize isoform a (NP_000193.1).

Immunogen

Peptide with sequence C-KHFRFRDLEEDP, from the internal region of the protein sequence according to NP_000193.1.

Please note the [peptide](#) is available for sale.

Purification and Storage

Purified from goat serum by ammonium sulphate precipitation followed by antigen affinity chromatography using the immunizing peptide.

Supplied at 0.5 mg/ml in Tris saline, 0.02% sodium azide, pH7.3 with 0.5% bovine serum albumin.

Aliquot and store at -20°C. Minimize freezing and thawing.

Applications Tested

Peptide ELISA: antibody detection limit dilution 1:16000.

Western blot: Approx. 60kDa band observed in Human Liver lysates (calculated MW of 61.9kDa according to NP_000193.1). Recommended concentration: 0.1-0.3µg/ml.

IHC: In paraffin embedded Human Placenta shows lysosomal staining of trophoblasts. Recommended concentration: 3-5µg/ml.

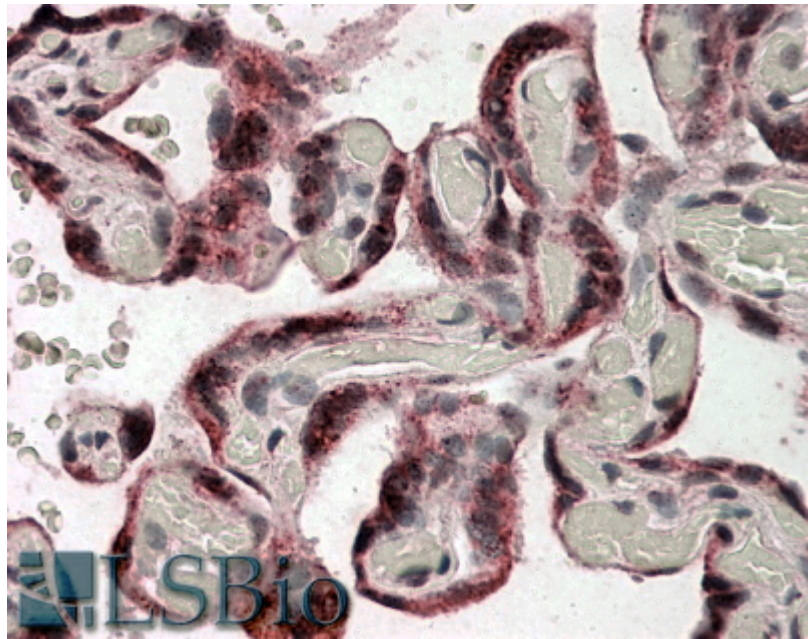
Species Reactivity

Tested: Human

Expected from sequence similarity: Human



EB08984 (0.1µg/ml) staining of Human Liver lysate (35µg protein in RIPA buffer). Primary incubation was 1 hour.
Detected by chemiluminescence.



EB08984 (3.8µg/ml) staining of paraffin embedded Human Placenta. Steamed antigen retrieval with citrate buffer
pH 6, AP-staining.