

## UK Office

### Everest Biotech Ltd

Cherwell Innovation Centre  
77 Heyford Park  
Upper Heyford  
Oxfordshire  
OX25 5HD  
UK

Enquiries:

[info@everestbiotech.com](mailto:info@everestbiotech.com)

Sales:

[sales@everestbiotech.com](mailto:sales@everestbiotech.com)

Tech support:

[support@everestbiotech.com](mailto:support@everestbiotech.com)

Tel: +44 (0)1869 238326

[www.everestbiotech.com](http://www.everestbiotech.com)

**Research Use Only. Not for  
diagnostic or therapeutic use.**

## EB12862 - Goat Anti-IFITM3 Antibody

Size: 100µg specific antibody in 200µl



### Target Protein

**Principal Names:** IFITM3, interferon induced transmembrane protein 3, 1-8U, DSPA2b, IP15, dispanin subfamily A member 2b, interferon-induced transmembrane protein 3, interferon-inducible protein 1-8U

**Official Symbol:** IFITM3

**Accession Number(s):** NP\_066362.2

**Human GeneID(s):** [10410](#)

**Important Comments:** The immunizing peptide only differs by one residue from IFITM2 and therefore cross-reactivation of this antibody is to be expected.

### Immunogen

Peptide with sequence C-HNPAPPTSTVIHIRS, from the internal region of the protein sequence according to NP\_066362.2.

Please note the [peptide](#) is available for sale.

### Purification and Storage

Purified from goat serum by ammonium sulphate precipitation followed by antigen affinity chromatography using the immunizing peptide.

Supplied at 0.5 mg/ml in Tris saline, 0.02% sodium azide, pH7.3 with 0.5% bovine serum albumin.

Aliquot and store at -20°C. Minimize freezing and thawing.

### Applications Tested

**Peptide ELISA:** antibody detection limit dilution 1:64000.

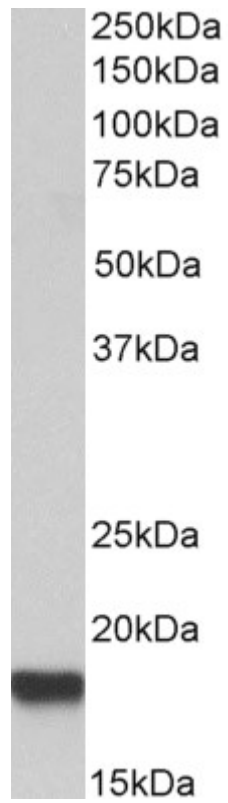
**Western blot:** Approx 17kDa band observed in lysates of cell line HeLa (calculated MW of 14.6kDa according to NP\_066362.2). The observed molecular weight corresponds to the lipidated form. Recommended concentration: 0.3-1µg/ml. Primary incubation was 1 hour.

**IHC:** Paraffin embedded Human Kidney and Spleen. Recommended concentration: 2.5µg/ml.

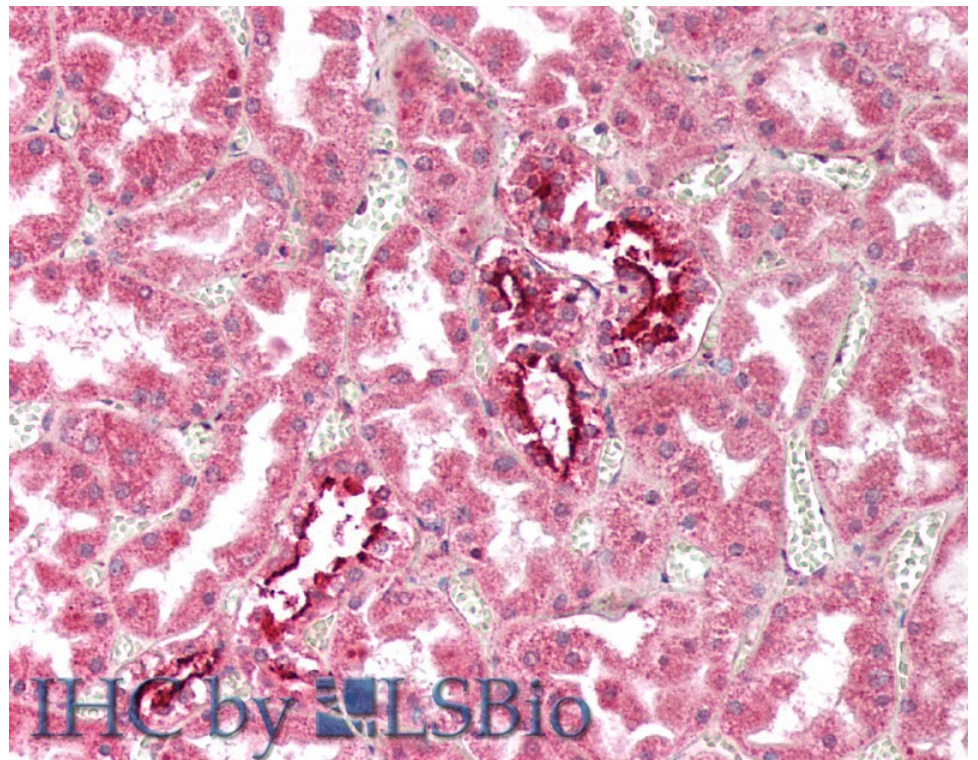
### Species Reactivity

**Tested:** Human

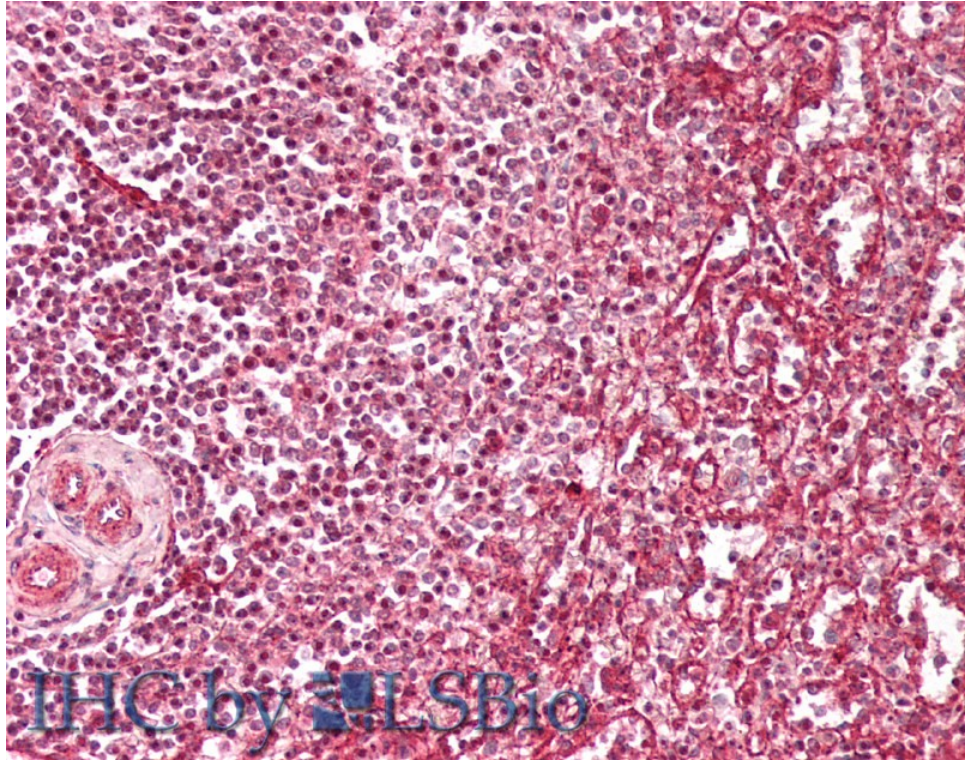
**Expected from sequence similarity:** Human



EB12862 (0.5µg/ml) staining of HeLa lysate (35µg protein in RIPA buffer). Detected by chemiluminescence.



EB12862 (2.5µg/ml) staining of paraffin embedded Human Kidney. Steamed antigen retrieval with citrate buffer pH 6, AP-staining.



EB12862 (2.5µg/ml) staining of paraffin embedded Human Spleen. Steamed antigen retrieval with citrate buffer pH 6, AP-staining.