



UK Office

Everest Biotech Ltd

Cherwell Innovation Centre
77 Heyford Park
Upper Heyford
Oxfordshire
OX25 5HD
UK

Enquiries:

info@everestbiotech.com

Sales:

sales@everestbiotech.com

Tech support:

support@everestbiotech.com

Tel: +44 (0)1869 238326

Fax: +44 (0)1869 238327

US Office

Everest Biotech c/o Abcore

405 Maple Street, Suite A106
Ramona,
CA 92065
USA

Inquiries:

info@everestbiotech.com

Sales:

usasales@everestbiotech.com

Tech support:

support@everestbiotech.com

Tel: 888-320-4628 (toll-free)

Fax: 888-841-9041

www.everestbiotech.com

**Research Use Only. Not for
diagnostic or therapeutic use.**

EB08349 - Goat Anti-IFNAR2 Antibody

Size: 100µg specific antibody in 200µl



Target Protein

Principal Names: IFNAR2, interferon (alpha, beta and omega) receptor 2, IFN-R, IFN-alpha-REC, IFNABR, IFNARB

Official Symbol: IFNAR2

Accession Number(s): NP_000865.2 ; NP_997467.1; NP_997468.1

Human GeneID(s): [3455](#)

Important Comments: This antibody is expected to recognise all three reported isoforms (NP_000865.2 ; NP_997467.1; NP_997468.1)

Immunogen

Peptide with sequence SYDSPDYTDESCCT, from the internal region of the protein sequence according to NP_000865.2 ; NP_997467.1; NP_997468.1 .

Please note the [peptide](#) is available for sale.

Purification and Storage

Purified from goat serum by ammonium sulphate precipitation followed by antigen affinity chromatography using the immunizing peptide.

Supplied at 0.5 mg/ml in Tris saline, 0.02% sodium azide, pH7.3 with 0.5% bovine serum albumin.

Aliquot and store at -20°C. Minimize freezing and thawing.

Applications Tested

Peptide ELISA: antibody detection limit dilution 1:32000.

Western blot: Preliminary experiments gave an approx 28kDa band in Human Uterus lysates after 0.2µg/ml antibody staining. Please note that currently we cannot find an explanation in the literature for the band we observe given the calculated size of 37.4kDa according to NP_000865.2. The 28kDa band was successfully blocked by incubation with the immunizing peptide.

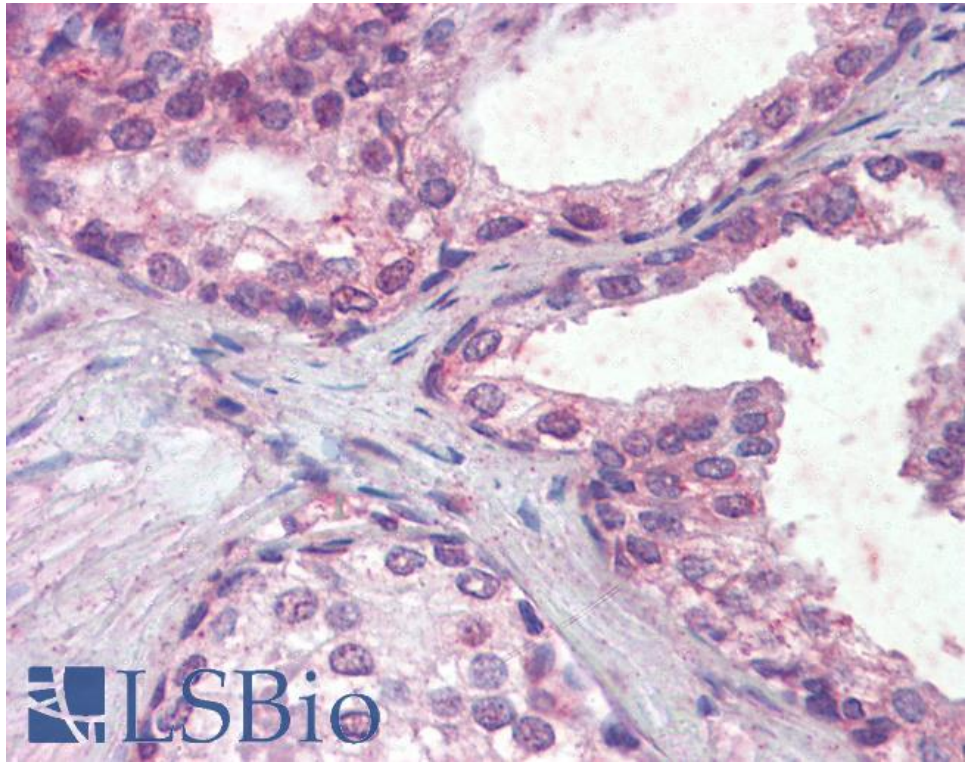
IHC: Paraffin embedded Human Prostate and Placenta. Recommended concentration: 5µg/ml.

Flow Cytometry: Flow cytometric analysis of K562 cells. Recommended concentration: 10ug/ml.

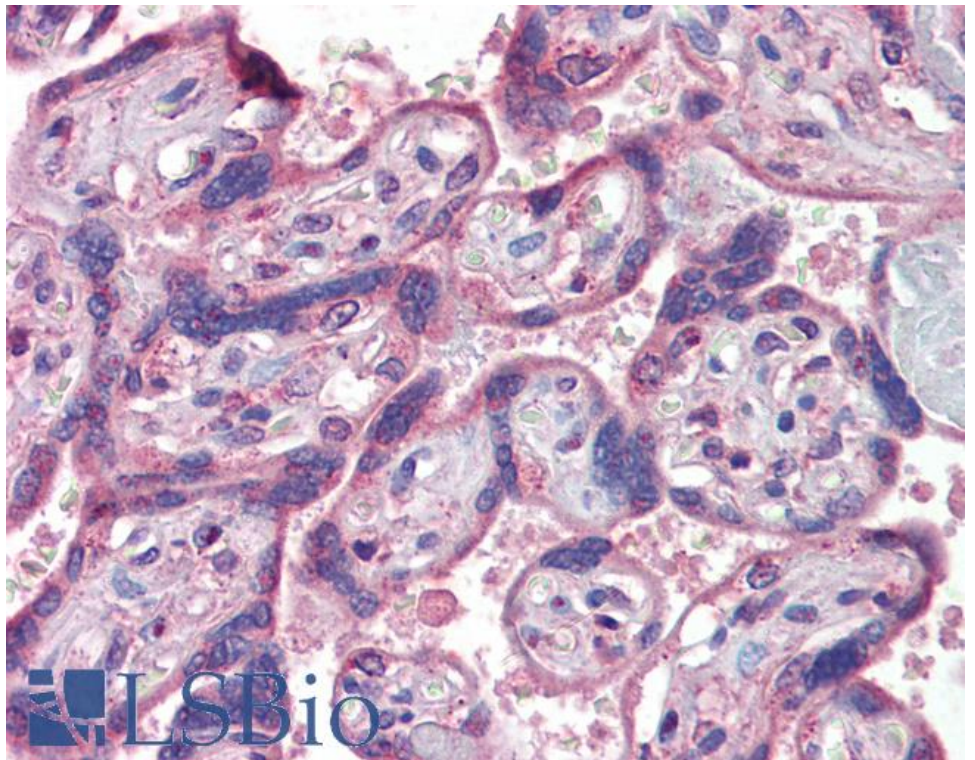
Species Reactivity

Tested: Human

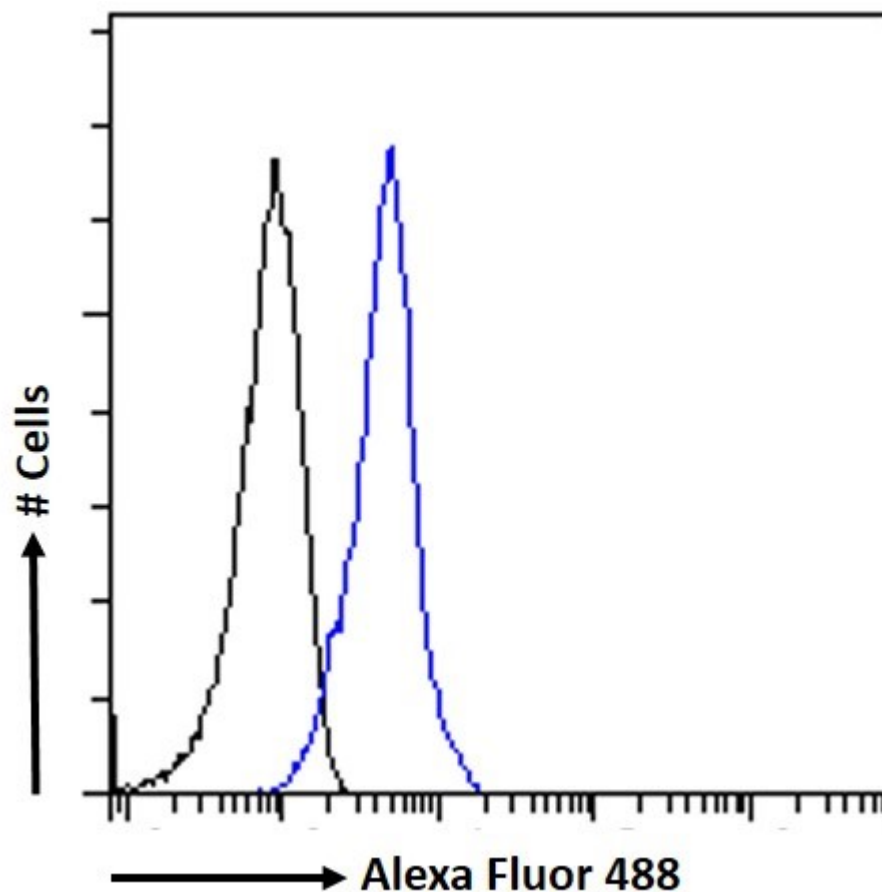
Expected from sequence similarity: Human



EB08349 (5µg/ml) staining of paraffin embedded Human Prostate. Steamed antigen retrieval with citrate buffer Ph 6, AP-staining.



EB08349 (5µg/ml) staining of paraffin embedded Human Placenta. Steamed antigen retrieval with citrate buffer pH 6, AP-staining.



EB08349 Flow cytometric analysis of paraformaldehyde fixed K562 cells (blue line), permeabilized with 0.5% Triton. Primary incubation 1hr (10ug/ml) followed by Alexa Fluor 488 secondary antibody (1ug/ml). IgG control: Unimmunized goat IgG (black line) followed by Alexa Fluor 488 secondary antibody.