

## UK Office

### Everest Biotech Ltd

Cherwell Innovation Centre  
77 Heyford Park  
Upper Heyford  
Oxfordshire  
OX25 5HD  
UK

Enquiries:

[info@everestbiotech.com](mailto:info@everestbiotech.com)

Sales:

[sales@everestbiotech.com](mailto:sales@everestbiotech.com)

Tech support:

[support@everestbiotech.com](mailto:support@everestbiotech.com)

Tel: +44 (0)1869 238326

[www.everestbiotech.com](http://www.everestbiotech.com)

**Research Use Only. Not for  
diagnostic or therapeutic use.**

## EB11063 - Goat Anti-IGF2 (aa81-93) Antibody

Size: 100µg specific antibody in 200µl



### Target Protein

**Principal Names:** C11orf43, FLJ22066, FLJ44734, IGF-II, insulin-like growth factor 2 (somatomedin A), insulin-like growth factor II, insulin-like growth factor type 2, OTTHUMP00000220677, PP9974, somatomedin-A, IGF2

**Official Symbol:** IGF2

**Accession Number(s):** NP\_000603.1; NP\_001121070.1

**Human GeneID(s):** [3481](#)

**Non-Human GeneID(s):** 16002 (mouse), 24483 (rat)

**Important Comments:** This antibody is expected to recognize both reported isoforms (NP\_000603.1; NP\_001121070.1). Reported variants represent identical protein: NP\_000603.1, NP\_001007140.2

### Immunogen

Peptide with sequence ETYCATPAKSERD, from the internal region of the protein sequence according to NP\_000603.1; NP\_001121070.1.

Please note the [peptide](#) is available for sale.

### Purification and Storage

Purified from goat serum by ammonium sulphate precipitation followed by antigen affinity chromatography using the immunizing peptide.

Supplied at 0.5 mg/ml in Tris saline, 0.02% sodium azide, pH7.3 with 0.5% bovine serum albumin.

Aliquot and store at -20°C. Minimize freezing and thawing.

### Applications Tested

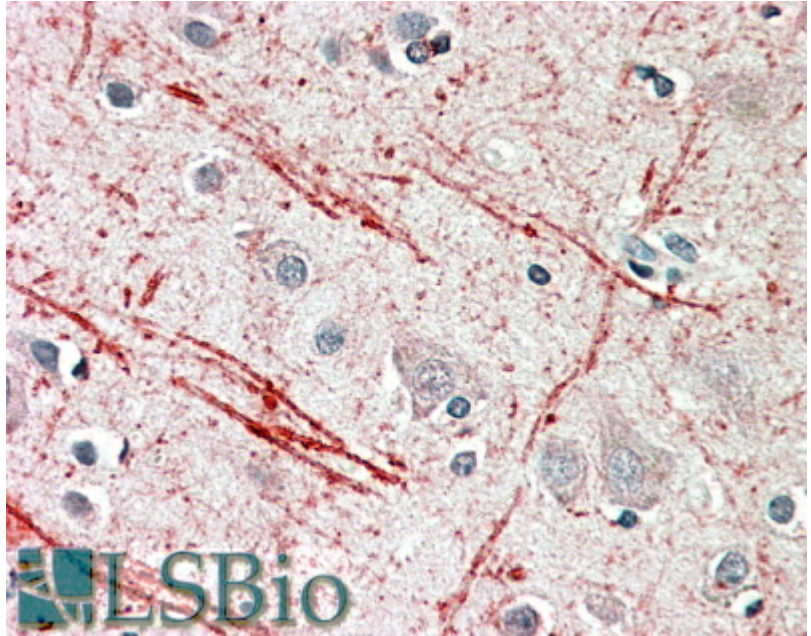
**Peptide ELISA:** antibody detection limit dilution 1:64000.

**IHC:** In paraffin embedded Human Cortex shows axonal staining. Recommended concentration: 5-10µg/ml.

### Species Reactivity

**Tested:** Human

**Expected from sequence similarity:** Human, Mouse, Rat, Dog, Cow



EB11063 (5µg/ml) staining of paraffin embedded Human Cortex. Steamed antigen retrieval with citrate buffer pH 6, AP-staining.