



## UK Office

### Everest Biotech Ltd

Cherwell Innovation Centre  
77 Heyford Park  
Upper Heyford  
Oxfordshire  
OX25 5HD  
UK

Enquiries:

[info@everestbiotech.com](mailto:info@everestbiotech.com)

Sales:

[sales@everestbiotech.com](mailto:sales@everestbiotech.com)

Tech support:

[support@everestbiotech.com](mailto:support@everestbiotech.com)

Tel: +44 (0)1869 238326

Fax: +44 (0)1869 238327

## US Office

### Everest Biotech c/o Abcore

405 Maple Street, Suite A106  
Ramona,  
CA 92065  
USA

Inquiries:

[info@everestbiotech.com](mailto:info@everestbiotech.com)

Sales:

[usasales@everestbiotech.com](mailto:usasales@everestbiotech.com)

Tech support:

[support@everestbiotech.com](mailto:support@everestbiotech.com)

Tel: 888-320-4628 (toll-free)

Fax: 888-841-9041

[www.everestbiotech.com](http://www.everestbiotech.com)

**Research Use Only. Not for  
diagnostic or therapeutic use.**

## EB10067 - Goat Anti-IGF2BP1/IMP1 Antibody

Size: 100µg specific antibody in 200µl



### Target Protein

**Principal Names:** coding region determinant-binding protein, CRDBP, CRD-BP, IGF II mRNA binding protein 1, IGF2 mRNA-binding protein 1, IMP1, IMP-1, insulin-like growth factor 2 mRNA binding protein 1, VICKZ family member 1, VICKZ1, ZBP1, zipcode-binding protein 1, IGF2BP1

**Official Symbol:** IGF2BP1

**Accession Number(s):** NP\_006537.3; NP\_001153895.1

**Human GeneID(s):** [10642](#)

**Non-Human GeneID(s):** 140486 (mouse), 303477 (rat)

**Important Comments:** This antibody is expected to recognize both reported isoforms (NP\_006537.3; NP\_001153895.1).

### Immunogen

Peptide with sequence C-EKVFAEHKISYSQG, from the internal region of the protein sequence according to NP\_006537.3; NP\_001153895.1.

Please note the [peptide](#) is available for sale.

### Purification and Storage

Purified from goat serum by ammonium sulphate precipitation followed by antigen affinity chromatography using the immunizing peptide.

Supplied at 0.5 mg/ml in Tris saline, 0.02% sodium azide, pH7.3 with 0.5% bovine serum albumin.

Aliquot and store at -20°C. Minimize freezing and thawing.

### Applications Tested

**Peptide ELISA:** antibody detection limit dilution 1:16000.

**Western blot:** Approx 65kDa band observed in lysates of cell line Caco-2 and approx.

70kDa in lysates of cell line K562 and in nuclear cell lysates of HepG2 and NIH3T3 (calculated MW of 63.5kDa according to Human NP\_006537.3 and Mouse NP\_034081.1).

Recommended concentration: 0.1-1µg/ml. Primary incubation 1 hour at room temperature.

**Positive Control:** A batch specific positive control lysate is available for this product.

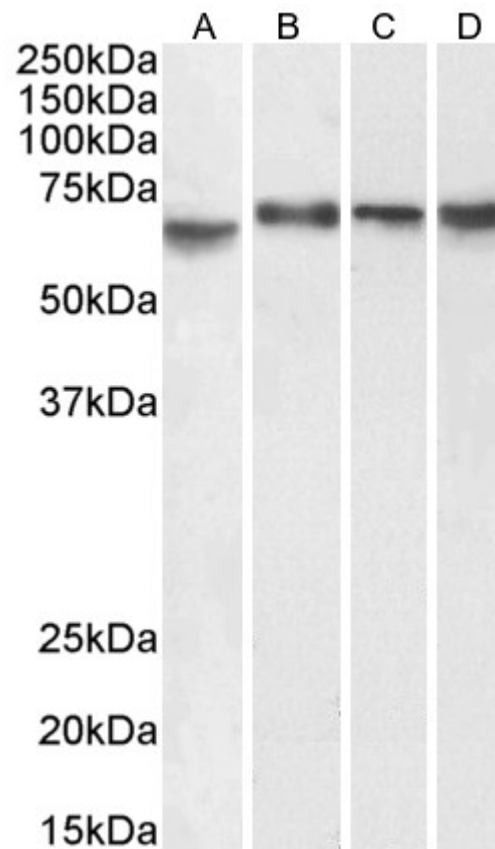
Please contact [Sales@everestbiotech.com](mailto:Sales@everestbiotech.com) for availability.

**IHC:** Paraffin embedded Human Breast. Recommended concentration: 3.75µg/ml.

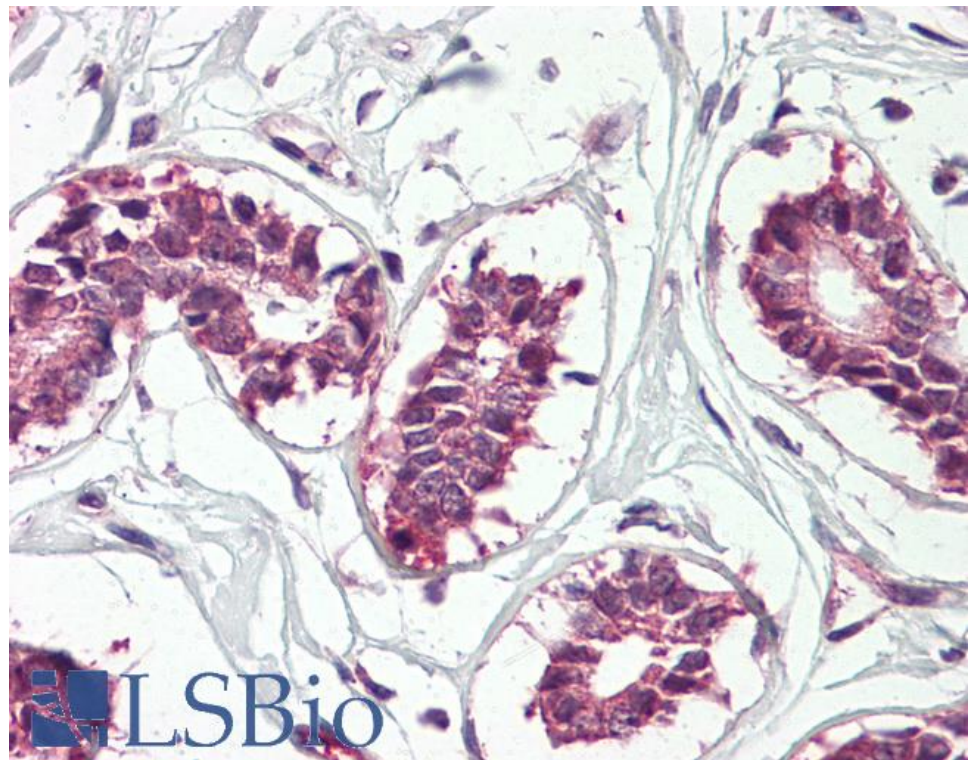
### Species Reactivity

**Tested:** Human, Mouse

**Expected from sequence similarity:** Human, Mouse, Rat, Dog, Cow



EB10067 (0.1 $\mu$ g/ml) staining of Caco-2 (A), (0.3 $\mu$ g/ml) K562 (B), nuclear HepG2 (C) and (1 $\mu$ g/ml) nuclear NIH3T3 (D) cell lysate (35 $\mu$ g protein in RIPA buffer). Detected by chemiluminescence.



EB10067 (3.75 $\mu$ g/ml) staining of paraffin embedded Human Breast. Steamed antigen retrieval with citrate buffer pH 6, AP-staining.