



UK Office

Everest Biotech Ltd

Cherwell Innovation Centre
77 Heyford Park
Upper Heyford
Oxfordshire
OX25 5HD
UK

Enquiries:

info@everestbiotech.com

Sales:

sales@everestbiotech.com

Tech support:

support@everestbiotech.com

Tel: +44 (0)1869 238326

Fax: +44 (0)1869 238327

US Office

Everest Biotech c/o Abcore

405 Maple Street, Suite A106
Ramona,
CA 92065
USA

Inquiries:

info@everestbiotech.com

Sales:

usasales@everestbiotech.com

Tech support:

support@everestbiotech.com

Tel: 888-320-4628 (toll-free)

Fax: 888-841-9041

www.everestbiotech.com

**Research Use Only. Not for
diagnostic or therapeutic use.**

EB08289 - Goat Anti-IGF2BP2 Antibody

Size: 100µg specific antibody in 200µl



Target Protein

Principal Names: IGF2BP2, insulin-like growth factor 2 mRNA binding protein 2, IMP-2, IMP2, VICKZ2, p62, IGF II mRNA binding protein 2, IGF-II mRNA-binding protein 2

Official Symbol: IGF2BP2

Accession Number(s): NP_006539.3; NP_001007226.1

Human GeneID(s): [10644](#)

Non-Human GeneID(s): 319765 (mouse)

Important Comments: This antibody is expected to recognise both reported isoforms (NP_006539.3 and NP_001007226.1).

Immunogen

Peptide with sequence C-KQREQKYPQGVASQR, from the C Terminus of the protein sequence according to NP_006539.3; NP_001007226.1.

Please note the [peptide](#) is available for sale.

Purification and Storage

Purified from goat serum by ammonium sulphate precipitation followed by antigen affinity chromatography using the immunizing peptide.

Supplied at 0.5 mg/ml in Tris saline, 0.02% sodium azide, pH7.3 with 0.5% bovine serum albumin.

Aliquot and store at -20°C. Minimize freezing and thawing.

Applications Tested

Peptide ELISA: antibody detection limit dilution 1:16000.

Western blot: Approx. 60-70kDa band observed in lysates of cell line HepG2 (calculated MW of 66.1kDa according to NP_006539.3). In transfected HEK293 transiently expressing IGF2BP2 a band of approx. 65kDa is observed. This band is not observed in the non-transfected HEK293. Recommended concentration: 1-3µg/ml.

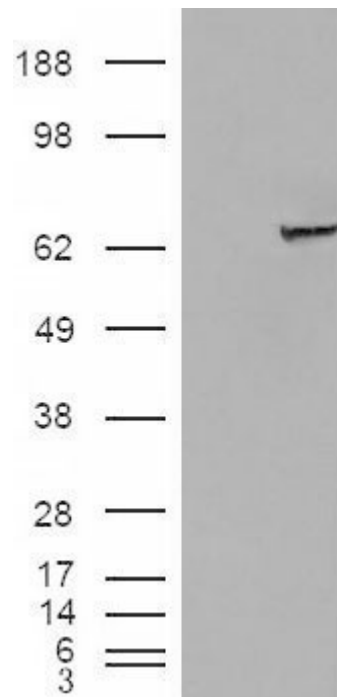
Species Reactivity

Tested: Human

Expected from sequence similarity: Human, Mouse, Dog



EB08289 (1µg/ml) staining of HepG2 cell lysate (35µg protein in RIPA buffer). Primary incubation was 1 hour.
Detected by chemiluminescence.



HEK293 overexpressing IGF2BP2 (RC205673) and probed with EB08289 (mock transfection in first lane), tested
by Origene.