



UK Office

Everest Biotech Ltd

Cherwell Innovation Centre
77 Heyford Park
Upper Heyford
Oxfordshire
OX25 5HD
UK

Enquiries:

info@everestbiotech.com

Sales:

sales@everestbiotech.com

Tech support:

support@everestbiotech.com

Tel: +44 (0)1869 238326

www.everestbiotech.com

**Research Use Only. Not for
diagnostic or therapeutic use.**

EB11950 - Goat Anti-IGFBP1 Antibody

Size: 100µg specific antibody in 200µl



Target Protein

Principal Names: IGFBP1, insulin-like growth factor binding protein 1, AFBP, IBP1, IGF-BP25, PP12, hIGFBP-1, IBP-1, IGF-binding protein 1, IGFBP-1, OTTHUMP00000159561, OTTHUMP00000207990, OTTHUMP00000214348, alpha-pregnancy-associated endometrial globulin, amniotic fluid binding protein, binding protein-25, binding protein-26, binding protein-28, growth hormone independent-binding protein, insulin-like growth factor-binding protein 1, placental protein 12

Official Symbol: IGFBP1

Accession Number(s): NP_000587.1

Human GeneID(s): [3484](#)

Immunogen

Peptide with sequence RIPGSPEIRGDPNCQ, from the C Terminus of the protein sequence according to NP_000587.1.

Please note the [peptide](#) is available for sale.

Purification and Storage

Purified from goat serum by ammonium sulphate precipitation followed by antigen affinity chromatography using the immunizing peptide.

Supplied at 0.5 mg/ml in Tris saline, 0.02% sodium azide, pH7.3 with 0.5% bovine serum albumin.

Aliquot and store at -20°C. Minimize freezing and thawing.

Applications Tested

Peptide ELISA: antibody detection limit dilution 1:128000.

Western blot: Approx 30kDa band observed in Human Placenta lysates (calculated MW of 27.9kDa according to NP_000587.1). Recommended concentration: 0.1-0.3µg/ml.

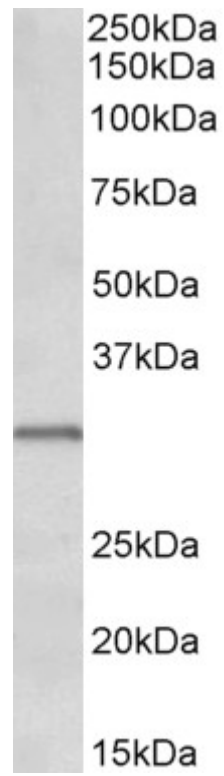
Primary incubation was 1 hour.

IHC: Paraffin embedded Human Testis. Recommended concentration: 5µg/ml.

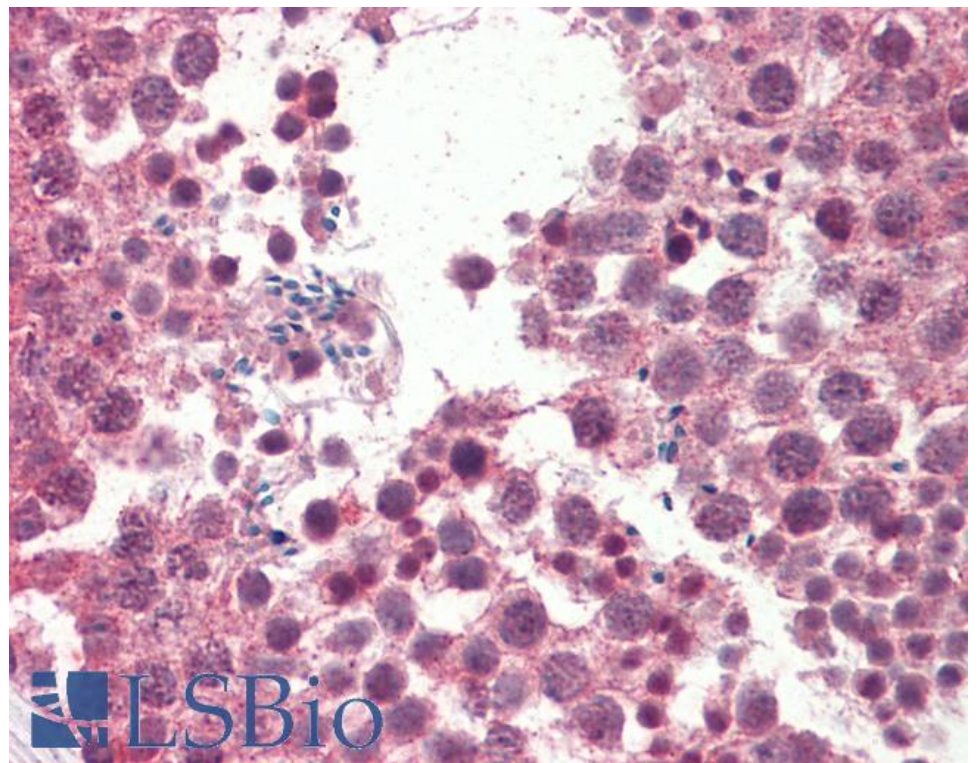
Species Reactivity

Tested: Human

Expected from sequence similarity: Human



EB11950 (0.1µg/ml) staining of Human Placenta lysate (35µg protein in RIPA buffer). Detected by chemiluminescence.



EB11950 (5µg/ml) staining of paraffin embedded Human Testis. Steamed antigen retrieval with citrate buffer pH 6, AP-staining.