



UK Office

Everest Biotech Ltd

Cherwell Innovation Centre
77 Heyford Park
Upper Heyford
Oxfordshire
OX25 5HD
UK

Enquiries:

info@everestbiotech.com

Sales:

sales@everestbiotech.com

Tech support:

support@everestbiotech.com

Tel: +44 (0)1869 238326

www.everestbiotech.com

**Research Use Only. Not for
diagnostic or therapeutic use.**

EB09317 - Goat Anti-IGFBP7 (aa145-159) Antibody

Size: 100µg specific antibody in 200µl



Target Protein

Principal Names: IGFBP7, insulin-like growth factor binding protein 7, FSTL2, IGFBP-7, IGFBP-7v, IGFBPRP1, MAC25, PSF

Official Symbol: IGFBP7

Accession Number(s): NP_001544.1

Human GeneID(s): [3490](#)

Immunogen

Peptide with sequence EKAITQVSKGTCEQG, from the internal region of the protein sequence according to NP_001544.1.

Please note the [peptide](#) is available for sale.

Purification and Storage

Purified from goat serum by ammonium sulphate precipitation followed by antigen affinity chromatography using the immunizing peptide.

Supplied at 0.5 mg/ml in Tris saline, 0.02% sodium azide, pH7.3 with 0.5% bovine serum albumin.

Aliquot and store at -20°C. Minimize freezing and thawing.

Applications Tested

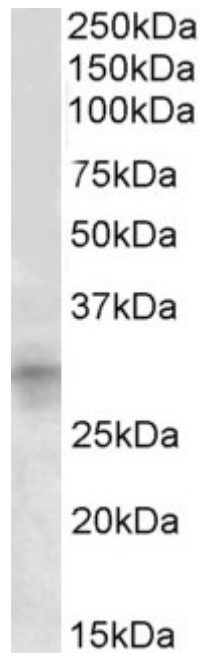
Peptide ELISA: antibody detection limit dilution 1:8000.

Western blot: Approx 30kDa band observed in Mouse Kidney lysates (calculated MW of 29.1kDa according to Human NP_001544.1 and to Mouse NP_032074.3). Recommended concentration: 1-3µg/ml. Primary incubation was 1 hour. Preliminary testing was unsuccessful on Rat and Human Heart, and Human Placenta for this particular batch.

Species Reactivity

Tested: Mouse

Expected from sequence similarity: Human, Mouse, Rat



EB09317 (1 μ g/ml) staining of Mouse Kidney lysate (35 μ g protein in RIPA buffer). Detected by chemiluminescence.