



UK Office

Everest Biotech Ltd

Cherwell Innovation Centre
77 Heyford Park
Upper Heyford
Oxfordshire
OX25 5HD
UK

Enquiries:

info@everestbiotech.com

Sales:

sales@everestbiotech.com

Tech support:

support@everestbiotech.com

Tel: +44 (0)1869 238326

www.everestbiotech.com

**Research Use Only. Not for
diagnostic or therapeutic use.**

EB09708 - Goat Anti-IKAROS / IKZF1 Antibody

Size: 100µg specific antibody in 200µl



Target Protein

Principal Names: IKZF1, IKAROS family zinc finger 1 (Ikaros), Hs.54452, IK1, IKAROS, LYF1, PRO0758, ZNFN1A1, hlk-1, CLL-associated antigen KW-6, Ikaros (zinc finger protein), zinc finger protein, subfamily 1A, 1 (Ikaros), lymphoid transcription factor LyF-1

Official Symbol: IKZF1

Accession Number(s): NP_006051.1;
NP_001278766.1;NP_001278767.1;NP_001207696.1;NP_001207697.1;
NP_001278768.1; NP_001207699.1; NP_001207700.1

Human GeneID(s): [10320](#)

Important Comments: This antibody is expected to recognise all isoforms
NP_001278766.1;NP_001278767.1;NP_001207696.1;NP_001207697.1;
NP_001278768.1; NP_001207699.1; NP_001207700.1

Immunogen

Peptide with sequence C-DTPYDSSASYEKEN, from the internal region of the protein sequence according to NP_006051.1;

NP_001278766.1;NP_001278767.1;NP_001207696.1;NP_001207697.1;
NP_001278768.1; NP_001207699.1; NP_001207700.1.

Please note the [peptide](#) is available for sale.

Purification and Storage

Purified from goat serum by ammonium sulphate precipitation followed by antigen affinity chromatography using the immunizing peptide.

Supplied at 0.5 mg/ml in Tris saline, 0.02% sodium azide, pH7.3 with 0.5% bovine serum albumin.

Aliquot and store at -20°C. Minimize freezing and thawing.

Applications Tested

Peptide ELISA: antibody detection limit dilution 1:1000.

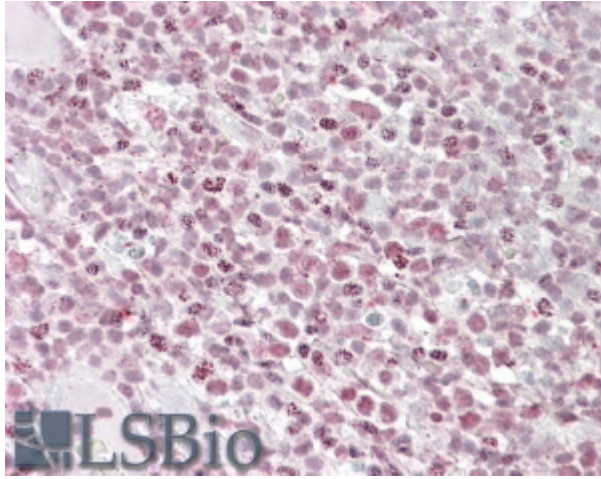
Western blot: Preliminary testing showed a band at approx. 60kDa in Human Lymph node and Peripheral Blood Monocyte lysate, after 1ug/ml antibody staining (calculated MW of 57.5kDa according to NP_006051.1). Primary incubation 1 hour at room temperature.

IHC: In paraffin embedded Human Tonsil shows textured staining in some nuclei of the lymphoid tissue. Recommended concentration: 2.5-3.8µg/ml.

Species Reactivity

Tested: Human

Expected from sequence similarity: Human, Dog, Cow



EB09708 (3.8 μ g/ml) staining of paraffin embedded Human Tonsil. Steamed antigen retrieval with citrate buffer pH 6, AP-staining.