



## UK Office

### Everest Biotech Ltd

Cherwell Innovation Centre  
77 Heyford Park  
Upper Heyford  
Oxfordshire  
OX25 5HD  
UK

Enquiries:

[info@everestbiotech.com](mailto:info@everestbiotech.com)

Sales:

[sales@everestbiotech.com](mailto:sales@everestbiotech.com)

Tech support:

[support@everestbiotech.com](mailto:support@everestbiotech.com)

Tel: +44 (0)1869 238326

Fax: +44 (0)1869 238327

## US Office

### Everest Biotech c/o Abcore

405 Maple Street, Suite A106  
Ramona,  
CA 92065  
USA

Inquiries:

[info@everestbiotech.com](mailto:info@everestbiotech.com)

Sales:

[usasales@everestbiotech.com](mailto:usasales@everestbiotech.com)

Tech support:

[support@everestbiotech.com](mailto:support@everestbiotech.com)

Tel: 888-320-4628 (toll-free)

Fax: 888-841-9041

[www.everestbiotech.com](http://www.everestbiotech.com)

**Research Use Only. Not for  
diagnostic or therapeutic use.**

## EB09708 - Goat Anti-IKAROS / IKZF1 Antibody

Size: 100µg specific antibody in 200µl



### Target Protein

**Principal Names:** IKZF1, IKAROS family zinc finger 1 (Ikaros), Hs.54452, IK1, IKAROS, LYF1, PRO0758, ZNFN1A1, hlk-1, CLL-associated antigen KW-6, Ikaros (zinc finger protein), zinc finger protein, subfamily 1A, 1 (Ikaros), lymphoid transcription factor LyF-1

**Official Symbol:** IKZF1

**Accession Number(s):** NP\_006051.1;

NP\_001278766.1;NP\_001278767.1;NP\_001207696.1;NP\_001207697.1;

NP\_001278768.1; NP\_001207699.1; NP\_001207700.1

**Human GeneID(s):** [10320](#)

**Important Comments:** This antibody is expected to recognise all isoforms

NP\_001278766.1;NP\_001278767.1;NP\_001207696.1;NP\_001207697.1;

NP\_001278768.1; NP\_001207699.1; NP\_001207700.1

### Immunogen

Peptide with sequence C-DTPYDSSASYEKEN, from the internal region of the protein sequence according to NP\_006051.1;

NP\_001278766.1;NP\_001278767.1;NP\_001207696.1;NP\_001207697.1;

NP\_001278768.1; NP\_001207699.1; NP\_001207700.1.

Please note the [peptide](#) is available for sale.

### Purification and Storage

Purified from goat serum by ammonium sulphate precipitation followed by antigen affinity chromatography using the immunizing peptide.

Supplied at 0.5 mg/ml in Tris saline, 0.02% sodium azide, pH7.3 with 0.5% bovine serum albumin.

Aliquot and store at -20°C. Minimize freezing and thawing.

### Applications Tested

**Peptide ELISA:** antibody detection limit dilution 1:1000.

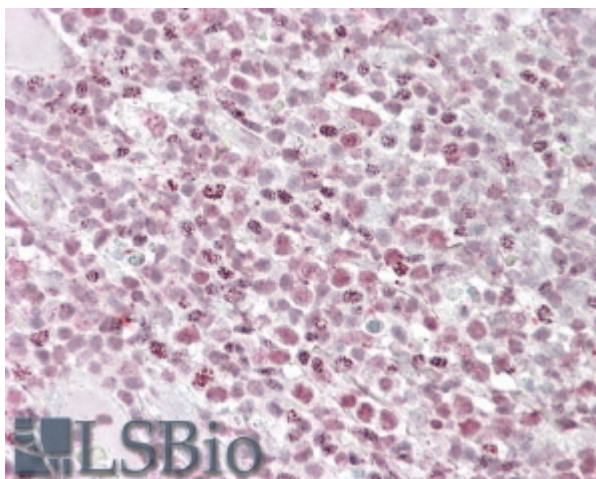
**Western blot:** Preliminary testing showed a band at approx. 60kDa in Human Lymph node and Peripheral Blood Monocyte lysate, after 1ug/ml antibody staining (calculated MW of 57.5kDa according to NP\_006051.1). Primary incubation 1 hour at room temperature.

**IHC:** In paraffin embedded Human Tonsil shows textured staining in some nuclei of the lymphoid tissue. Recommended concentration: 2.5-3.8µg/ml.

### Species Reactivity

**Tested:** Human

**Expected from sequence similarity:** Human, Dog, Cow



EB09708 (3.8µg/ml) staining of paraffin embedded Human Tonsil. Steamed antigen retrieval with citrate buffer pH 6, AP-staining.