



UK Office

Everest Biotech Ltd

Cherwell Innovation Centre
77 Heyford Park
Upper Heyford
Oxfordshire
OX25 5HD
UK

Enquiries:

info@everestbiotech.com

Sales:

sales@everestbiotech.com

Tech support:

support@everestbiotech.com

Tel: +44 (0)1869 238326

www.everestbiotech.com

**Research Use Only. Not for
diagnostic or therapeutic use.**

EB12342 - Goat Anti-IL-1 beta Antibody

Size: 100µg specific antibody in 200µl



Target Protein

Principal Names: IL1B, interleukin 1, beta, IL-1, IL1-BETA, IL1F2, IL-1 beta, catabolin, interleukin-1 beta, preinterleukin 1 beta, pro-interleukin-1-beta

Official Symbol: IL1B

Accession Number(s): NP_000567.1

Human GeneID(s): [3553](#)

Immunogen

Peptide with sequence C-QLESVDPKNYPKK, from the internal region of the protein sequence according to NP_000567.1.

Please note the [peptide](#) is available for sale.

Purification and Storage

Purified from goat serum by ammonium sulphate precipitation followed by antigen affinity chromatography using the immunizing peptide.

Supplied at 0.5 mg/ml in Tris saline, 0.02% sodium azide, pH7.3 with 0.5% bovine serum albumin.

Aliquot and store at -20°C. Minimize freezing and thawing.

Applications Tested

Peptide ELISA: antibody detection limit dilution 1:128000.

Western blot: Approx. 28kDa band observed in Human Peripheral Blood

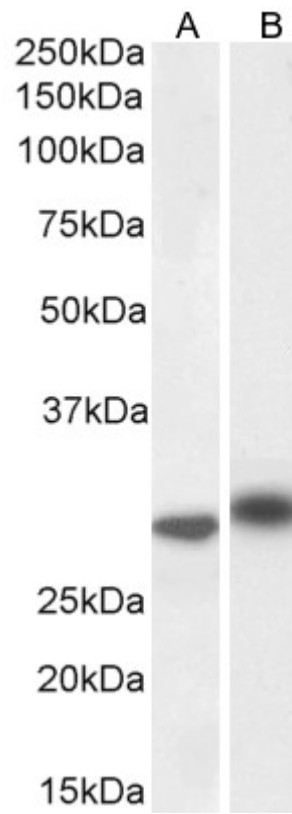
Mononucleocyte (PBM) lysates and approx. 30kDa in Human Bone Marrow lysates

(calculated MW of 30.7kDa according to NP_000567.1). Recommended concentration: 1-3µg/ml. Primary incubation 1 hour at room temperature.

Species Reactivity

Tested: Human

Expected from sequence similarity: Human



EB12342 (1 μ g/ml) staining of Human PBM (A) and Bone Marrow (B) lysate (35 μ g protein in RIPA buffer).
Detected by chemiluminescence.