

UK Office

Everest Biotech Ltd

Cherwell Innovation Centre
77 Heyford Park
Upper Heyford
Oxfordshire
OX25 5HD
UK

Enquiries:

info@everestbiotech.com

Sales:

sales@everestbiotech.com

Tech support:

support@everestbiotech.com

Tel: +44 (0)1869 238326

www.everestbiotech.com

**Research Use Only. Not for
diagnostic or therapeutic use.**

EB11758 - Goat Anti-IL-15 (aa70-82) Antibody

Size: 100µg specific antibody in 200µl



Target Protein

Principal Names: IL15, IL-15, interleukin 15, interleukin-15, MGC9721, OTTHUMP00000164616, OTTHUMP00000164617, OTTHUMP00000218093, OTTHUMP00000228804, OTTHUMP00000228805

Official Symbol: IL15

Accession Number(s): NP_000576.1; NP_751915.1

Human GeneID(s): [3600](#)

Important Comments: This antibody is expected to recognize both reported isoforms (NP_000576.1; NP_751915.1).

Immunogen

Peptide with sequence C-DATLYTESDVHPS, from the internal region of the protein sequence according to NP_000576.1; NP_751915.1.

Please note the [peptide](#) is available for sale.

Purification and Storage

Purified from goat serum by ammonium sulphate precipitation followed by antigen affinity chromatography using the immunizing peptide.

Supplied at 0.5 mg/ml in Tris saline, 0.02% sodium azide, pH7.3 with 0.5% bovine serum albumin.

Aliquot and store at -20°C. Minimize freezing and thawing.

Applications Tested

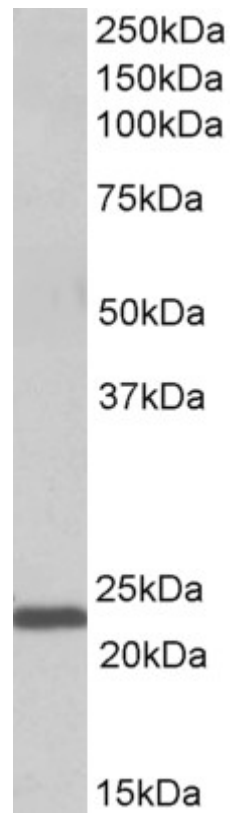
Peptide ELISA: antibody detection limit dilution 1:128000.

Western blot: Approx 23kDa band observed in Human Bone Marrow lysates (calculated MW of 18.1kDa according to NP_000576.1). The observed molecular weight corresponds to the glycosylated form. Recommended concentration: 1-3µg/ml.

Species Reactivity

Tested: Human

Expected from sequence similarity: Human



EB11758 (1 μ g/ml) staining of Human Bone Marrow lysate (35 μ g protein in RIPA buffer). Primary incubation was 1 hour. Detected by chemiluminescence.