

UK Office

Everest Biotech Ltd

Cherwell Innovation Centre
77 Heyford Park
Upper Heyford
Oxfordshire
OX25 5HD
UK

Enquiries:

info@everestbiotech.com

Sales:

sales@everestbiotech.com

Tech support:

support@everestbiotech.com

Tel: +44 (0)1869 238326

www.everestbiotech.com

**Research Use Only. Not for
diagnostic or therapeutic use.**

EB11728 - Goat Anti-IL-17A (aa126-137) Antibody

Size: 100µg specific antibody in 200µl



Target Protein

Principal Names: CTLA8, CTLA-8, cytotoxic T-lymphocyte-associated antigen 8, cytotoxic T-lymphocyte-associated protein 8, cytotoxic T-lymphocyte-associated serine esterase 8, IL17, IL-17, IL17A, IL-17A, interleukin 17 (cytotoxic T-lymp, interleukin 17A, OTTHUMP00000016597

Official Symbol: IL17A

Accession Number(s): NP_002181.1

Human GeneID(s): [3605](#)

Immunogen

Peptide with sequence PPHCPNSFRLEK, from the internal region of the protein sequence according to NP_002181.1.

Please note the [peptide](#) is available for sale.

Purification and Storage

Purified from goat serum by ammonium sulphate precipitation followed by antigen affinity chromatography using the immunizing peptide.

Supplied at 0.5 mg/ml in Tris saline, 0.02% sodium azide, pH7.3 with 0.5% bovine serum albumin.

Aliquot and store at -20°C. Minimize freezing and thawing.

Applications Tested

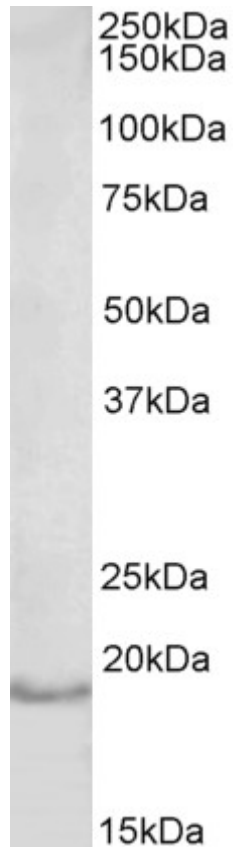
Peptide ELISA: antibody detection limit dilution 1:32000.

Western blot: Approx 19kDa band observed in Human Lymph Nodes and Thymus lysates (calculated MW of 17.5kDa according to NP_002181.1). Recommended concentration: 1-3µg/ml.

Species Reactivity

Tested: Human

Expected from sequence similarity: Human



EB11727 (1 μ g/ml) staining of Human Lymph Node lysate (35 μ g protein in RIPA buffer). Primary incubation was 1 hour. Detected by chemiluminescence.