



## UK Office

### Everest Biotech Ltd

Cherwell Innovation Centre  
77 Heyford Park  
Upper Heyford  
Oxfordshire  
OX25 5HD  
UK

Enquiries:

[info@everestbiotech.com](mailto:info@everestbiotech.com)

Sales:

[sales@everestbiotech.com](mailto:sales@everestbiotech.com)

Tech support:

[support@everestbiotech.com](mailto:support@everestbiotech.com)

Tel: +44 (0)1869 238326

[www.everestbiotech.com](http://www.everestbiotech.com)

**Research Use Only. Not for  
diagnostic or therapeutic use.**

## EB12085 - Goat Anti-IL-17D (aa55-65) Antibody

Size: 100µg specific antibody in 200µl



### Target Protein

**Principal Names:** IL17D, interleukin 17D, IL-17D, IL-22, IL-27, IL27, interleukin 27, interleukin-17D, interleukin-27

**Official Symbol:** IL17D

**Accession Number(s):** NP\_612141.1

**Human GeneID(s):** [53342](#)

**Non-Human GeneID(s):** 239114 (mouse)

### Immunogen

Peptide with sequence C-HHTLQLGPREQ, from the internal region of the protein sequence according to NP\_612141.1.

Please note the [peptide](#) is available for sale.

### Purification and Storage

Purified from goat serum by ammonium sulphate precipitation followed by antigen affinity chromatography using the immunizing peptide.

Supplied at 0.5 mg/ml in Tris saline, 0.02% sodium azide, pH7.3 with 0.5% bovine serum albumin.

Aliquot and store at -20°C. Minimize freezing and thawing.

### Applications Tested

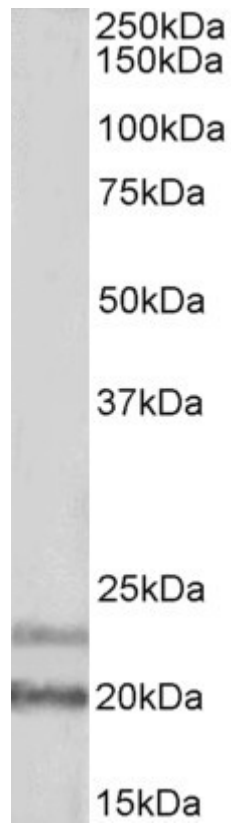
**Peptide ELISA:** antibody detection limit dilution 1:16000.

**Western blot:** Approx 20 and 23kDa bands observed in Human Brain (Frontal Cortex) lysates (calculated MW of 21.9kDa according to NP\_612141.1). The observed 23kDa band corresponds to the glycosylated form. Recommended concentration: 1-3µg/ml.

### Species Reactivity

**Tested:** Human

**Expected from sequence similarity:** Human, Mouse



EB12085 (1 $\mu$ g/ml) staining of Human Frontal Cortex lysate (35 $\mu$ g protein in RIPA buffer). Primary incubation was 1 hour. Detected by chemiluminescence.