



UK Office

Everest Biotech Ltd

Cherwell Innovation Centre
77 Heyford Park
Upper Heyford
Oxfordshire
OX25 5HD
UK

Enquiries:

info@everestbiotech.com

Sales:

sales@everestbiotech.com

Tech support:

support@everestbiotech.com

Tel: +44 (0)1869 238326

www.everestbiotech.com

**Research Use Only. Not for
diagnostic or therapeutic use.**

EB12023 - Goat Anti-IL-25 / IL-17E (aa66-79) Antibody

Size: 100µg specific antibody in 200µl



Target Protein

Principal Names: IL25, interleukin 25, IL17E, interleukin 17E, interleukin-17E, interleukin-25

Official Symbol: IL25

Accession Number(s): NP_073626.1; NP_758525.1

Human GeneID(s): [64806](#)

Important Comments: This antibody is expected to recognize both reported isoforms (NP_073626.1; NP_758525.1).

Immunogen

Peptide with sequence RPNRHPESCRASED, from the internal region of the protein sequence according to NP_073626.1; NP_758525.1.

Please note the [peptide](#) is available for sale.

Purification and Storage

Purified from goat serum by ammonium sulphate precipitation followed by antigen affinity chromatography using the immunizing peptide.

Supplied at 0.5 mg/ml in Tris saline, 0.02% sodium azide, pH7.3 with 0.5% bovine serum albumin.

Aliquot and store at -20°C. Minimize freezing and thawing.

Applications Tested

Peptide ELISA: antibody detection limit dilution 1:128000.

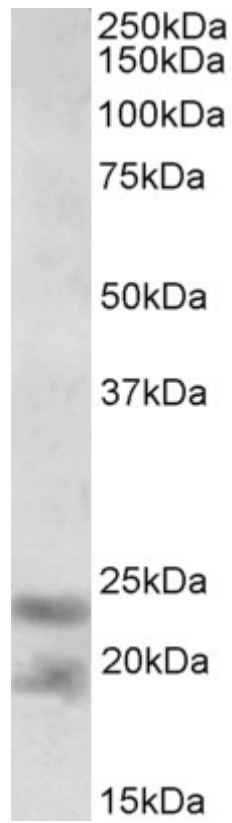
Western blot: Approx 23+19kDa bands observed in Human Prostate lysates (calculated MW of 20.3kDa according to NP_073626.1 and of 18.5kDa according to NP_758525.).

Recommended concentration: 0.3-1µg/ml.

Species Reactivity

Tested: Human

Expected from sequence similarity: Human



EB12023 (0.3µg/ml) staining of Human Prostate lysate (35µg protein in RIPA buffer). Primary incubation was 1 hour. Detected by chemiluminescence.