



## UK Office

### Everest Biotech Ltd

Cherwell Innovation Centre  
77 Heyford Park  
Upper Heyford  
Oxfordshire  
OX25 5HD  
UK

Enquiries:

[info@everestbiotech.com](mailto:info@everestbiotech.com)

Sales:

[sales@everestbiotech.com](mailto:sales@everestbiotech.com)

Tech support:

[support@everestbiotech.com](mailto:support@everestbiotech.com)

Tel: +44 (0)1869 238326

[www.everestbiotech.com](http://www.everestbiotech.com)

**Research Use Only. Not for  
diagnostic or therapeutic use.**

## EB07863 - Goat Anti-IL12b / IL12p40 (mouse) Antibody

Size: 100µg specific antibody in 200µl



### Target Protein

**Principal Names:** IL12B, IL12p40, interleukin 12B, RP23-388G23.1, IL-12b, IL-12p40, p40, IL-12 p40, IL-23 subunit p40

**Official Symbol:** IL12b

**Accession Number(s):** NP\_032378.1

**Non-Human GeneID(s):** 16160 (mouse), 64546 (rat)

### Immunogen

Peptide with sequence C-EARQQNKYENYS, from the internal region of the protein sequence according to NP\_032378.1.

Please note the [peptide](#) is available for sale.

### Purification and Storage

Purified from goat serum by ammonium sulphate precipitation followed by antigen affinity chromatography using the immunizing peptide.

Supplied at 0.5 mg/ml in Tris saline, 0.02% sodium azide, pH7.3 with 0.5% bovine serum albumin.

Aliquot and store at -20°C. Minimize freezing and thawing.

### Applications Tested

**Peptide ELISA:** antibody detection limit dilution 1:16000.

**Western blot:** Approx 38kDa band observed in Mouse and Rat Skin lysates (calculated MW of 38.2kDa according to Mouse NP\_032378.1 and 38.4kDa according to Rat NP\_072133.1). Recommended concentration: 0.3-1µg/ml. Primary incubation was 1 hour.

### Species Reactivity

**Tested:** Mouse, Rat

**Expected from sequence similarity:** Mouse, Rat

### Specific Reference

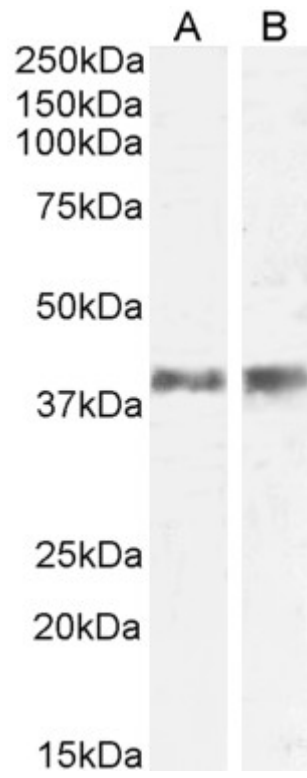
**This antibody (previous batch) has been successfully used in WB and IHC in Rat:**

Gui J, Xiong F, Yang W, Li J, Huang G.

Effects of acupuncture on LIF and IL-12 in rats of implantation failure.

Am J Reprod Immunol. 2012 May;67(5):383-90. doi: 10.1111/j.1600-0897.2011.01097.x.

PMID: 22229306



EB07863 (0.5 $\mu$ g/ml) staining of Mouse (A) and Rat (B) Skin lysate (35 $\mu$ g protein in RIPA buffer). Detected by chemiluminescence.