



## UK Office

### Everest Biotech Ltd

Cherwell Innovation Centre  
77 Heyford Park  
Upper Heyford  
Oxfordshire  
OX25 5HD  
UK

Enquiries:

[info@everestbiotech.com](mailto:info@everestbiotech.com)

Sales:

[sales@everestbiotech.com](mailto:sales@everestbiotech.com)

Tech support:

[support@everestbiotech.com](mailto:support@everestbiotech.com)

Tel: +44 (0)1869 238326

[www.everestbiotech.com](http://www.everestbiotech.com)

**Research Use Only. Not for  
diagnostic or therapeutic use.**

## EB12843 - Goat Anti-IL13RA2 (aa96-107) Antibody

Size: 100µg specific antibody in 200µl



### Target Protein

**Principal Names:** IL13RA2, interleukin 13 receptor, alpha 2, CD213A2, CT19, IL-13R, IL13BP, IL-13 receptor subunit alpha-2, IL-13R subunit alpha-2, IL-13R-alpha-2, IL-13RA2, cancer/testis antigen 19, interleukin 13 binding protein, interleukin 13 receptor alpha 2 chain, in

**Official Symbol:** IL13RA2

**Accession Number(s):** NP\_000631.1

**Human GeneID(s):** [3598](#)

### Immunogen

Peptide with sequence C-DLNKGIEAKIHT , from the internal region of the protein sequence according to NP\_000631.1.

Please note the [peptide](#) is available for sale.

### Purification and Storage

Purified from goat serum by ammonium sulphate precipitation followed by antigen affinity chromatography using the immunizing peptide.

Supplied at 0.5 mg/ml in Tris saline, 0.02% sodium azide, pH7.3 with 0.5% bovine serum albumin.

Aliquot and store at -20°C. Minimize freezing and thawing.

### Applications Tested

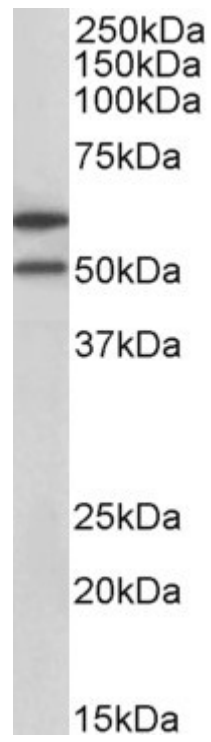
**Peptide ELISA:** antibody detection limit dilution 1:128000.

**Western blot:** Approx 50+60kDa bands observed in lysates of cell line HeLa (calculated MW of 44.2kDa according to NP\_000631.1). The observed molecular weight corresponds to earlier findings in literature with different antibodies (Kioi et al, FASEB J. 2006 Nov;20(13):2378-80. PMID: 17023392). Recommended concentration: 1-3µg/ml.

### Species Reactivity

**Tested:** Human

**Expected from sequence similarity:** Human



EB12843 (1 $\mu$ g/ml) staining of HeLa lysate (35 $\mu$ g protein in RIPA buffer). Primary incubation was 1 hour.  
Detected by chemiluminescence.