



## UK Office

### Everest Biotech Ltd

Cherwell Innovation Centre  
77 Heyford Park  
Upper Heyford  
Oxfordshire  
OX25 5HD  
UK

Enquiries:

[info@everestbiotech.com](mailto:info@everestbiotech.com)

Sales:

[sales@everestbiotech.com](mailto:sales@everestbiotech.com)

Tech support:

[support@everestbiotech.com](mailto:support@everestbiotech.com)

Tel: +44 (0)1869 238326

[www.everestbiotech.com](http://www.everestbiotech.com)

**Research Use Only. Not for  
diagnostic or therapeutic use.**

## EB12090 - Goat Anti-IL17C (aa160-172) Antibody

Size: 100µg specific antibody in 200µl



### Target Protein

**Principal Names:** IL17C, interleukin 17C, CX2, IL-17C, IL-21, cytokine CX2, interleukin-17C

**Official Symbol:** IL17C

**Accession Number(s):** NP\_037410.1

**Human GeneID(s):** [27189](#)

### Immunogen

Peptide with sequence RRPCSRDGSLPT, from the internal region of the protein sequence according to NP\_037410.1.

Please note the [peptide](#) is available for sale.

### Purification and Storage

Purified from goat serum by ammonium sulphate precipitation followed by antigen affinity chromatography using the immunizing peptide.

Supplied at 0.5 mg/ml in Tris saline, 0.02% sodium azide, pH7.3 with 0.5% bovine serum albumin.

Aliquot and store at -20°C. Minimize freezing and thawing.

### Applications Tested

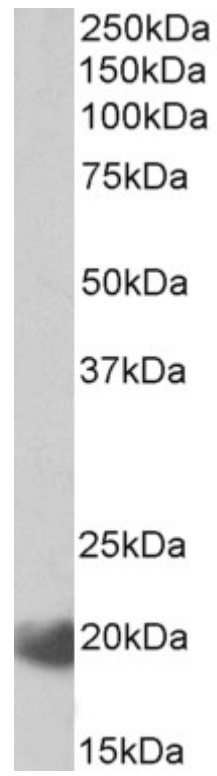
**Peptide ELISA:** antibody detection limit dilution 1:128000.

**Western blot:** Approx 20kDa band observed in Human Lymph Node lysates (calculated MW of 21.8kDa according to NP\_037410.1). Recommended concentration: 0.3-1µg/ml.

### Species Reactivity

**Tested:** Human

**Expected from sequence similarity:** Human



EB12090 (0.3 $\mu$ g/ml) staining of Human Lymph Node lysate (35 $\mu$ g protein in RIPA buffer). Primary incubation was 1 hour. Detected by chemiluminescence.