



## UK Office

### Everest Biotech Ltd

Cherwell Innovation Centre  
77 Heyford Park  
Upper Heyford  
Oxfordshire  
OX25 5HD  
UK

Enquiries:

[info@everestbiotech.com](mailto:info@everestbiotech.com)

Sales:

[sales@everestbiotech.com](mailto:sales@everestbiotech.com)

Tech support:

[support@everestbiotech.com](mailto:support@everestbiotech.com)

Tel: +44 (0)1869 238326

Fax: +44 (0)1869 238327

## US Office

### Everest Biotech c/o Abcore

405 Maple Street, Suite A106  
Ramona,  
CA 92065  
USA

Inquiries:

[info@everestbiotech.com](mailto:info@everestbiotech.com)

Sales:

[usasales@everestbiotech.com](mailto:usasales@everestbiotech.com)

Tech support:

[support@everestbiotech.com](mailto:support@everestbiotech.com)

Tel: 888-320-4628 (toll-free)

Fax: 888-841-9041

[www.everestbiotech.com](http://www.everestbiotech.com)

**Research Use Only. Not for  
diagnostic or therapeutic use.**

## EB07882 - Goat Anti-IL17ra (mouse) Antibody

Size: 100µg specific antibody in 200µl



### Target Protein

**Principal Names:** interleukin 17 receptor A, AW538159, Cdw217, IL17r, VDw217, interleukin 17 receptor

**Official Symbol:** IL17RA

**Accession Number(s):** NP\_032385.1

**Non-Human GeneID(s):** 16172 (mouse), 312679 (rat)

### Immunogen

Peptide with sequence C-DQEKHGDDSKIN, from the internal region of the protein sequence according to NP\_032385.1.

Please note the [peptide](#) is available for sale.

### Purification and Storage

Purified from goat serum by ammonium sulphate precipitation followed by antigen affinity chromatography using the immunizing peptide.

Supplied at 0.5 mg/ml in Tris saline, 0.02% sodium azide, pH7.3 with 0.5% bovine serum albumin.

Aliquot and store at -20°C. Minimize freezing and thawing.

### Applications Tested

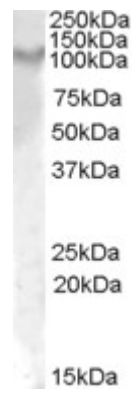
**Peptide ELISA:** antibody detection limit dilution 1:8000.

**Western blot:** Approx 110kDa band observed in Rat Kidney lysates (calculated MW of 96.1kDa according to Mouse NP\_032385.1 and of 97.9kDa according to Rat NP\_001101353.2). Recommended concentration: 1-3µg/ml.

### Species Reactivity

**Tested:** Rat

**Expected from sequence similarity:** Mouse, Rat



EB7882 (1µg/ml) staining of Rat Kidney lysate (35µg protein in RIPA buffer). Primary incubation was 1 hour.  
Detected by chemiluminescence.