



## UK Office

### Everest Biotech Ltd

Cherwell Innovation Centre  
77 Heyford Park  
Upper Heyford  
Oxfordshire  
OX25 5HD  
UK

Enquiries:

[info@everestbiotech.com](mailto:info@everestbiotech.com)

Sales:

[sales@everestbiotech.com](mailto:sales@everestbiotech.com)

Tech support:

[support@everestbiotech.com](mailto:support@everestbiotech.com)

Tel: +44 (0)1869 238326

Fax: +44 (0)1869 238327

## US Office

### Everest Biotech c/o Abcore

405 Maple Street, Suite A106  
Ramona,  
CA 92065  
USA

Inquiries:

[info@everestbiotech.com](mailto:info@everestbiotech.com)

Sales:

[usasales@everestbiotech.com](mailto:usasales@everestbiotech.com)

Tech support:

[support@everestbiotech.com](mailto:support@everestbiotech.com)

Tel: 888-320-4628 (toll-free)

Fax: 888-841-9041

[www.everestbiotech.com](http://www.everestbiotech.com)

**Research Use Only. Not for  
diagnostic or therapeutic use.**

## EB10107 - Goat Anti-IL1R2 Antibody

Size: 100µg specific antibody in 200µl



### Target Protein

**Principal Names:** antigen CDw121b, CD121b, IL1RB, interleukin 1 receptor, type II, MGC47725, type II interleukin-1 receptor, beta, IL1R2

**Official Symbol:** IL1R2

**Accession Number(s):** NP\_004624.1; NP\_001248348.1

**Human GeneID(s):** [7850](#)

**Important Comments:** This antibody is expected to cross-react with both reported isoforms (NP\_004624.1; NP\_001248348.1). Reported variants represent identical protein: NP\_775465.1, NP\_004624.1

### Immunogen

Peptide with sequence C-QYNITRSIELRIKK, from the internal region of the protein sequence according to NP\_004624.1; NP\_001248348.1.

Please note the [peptide](#) is available for sale.

### Purification and Storage

Purified from goat serum by ammonium sulphate precipitation followed by antigen affinity chromatography using the immunizing peptide.

Supplied at 0.5 mg/ml in Tris saline, 0.02% sodium azide, pH7.3 with 0.5% bovine serum albumin.

Aliquot and store at -20°C. Minimize freezing and thawing.

### Applications Tested

**Peptide ELISA:** antibody detection limit dilution 1:16000.

**Western blot:** Approx 45kDa band observed in lysates of cell lines LNCaP and MOLT-4 (calculated MW o 45.4kDa according to NP\_004624.1). Recommended concentration: 0.3-1µg/ml. Primary incubation 1 hour at room temperature.

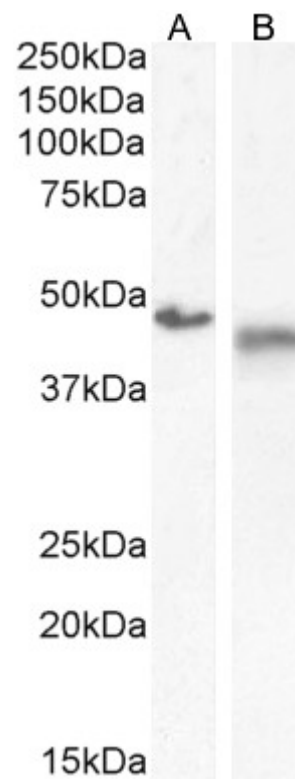
**Immunofluorescence:** Strong expression of the protein seen in the membranes and cytoplasm of A549 cells. Recommended concentration: 10µg/ml.

**Flow Cytometry:** Flow cytometric analysis of A549 cells. Recommended concentration: 10ug/ml.

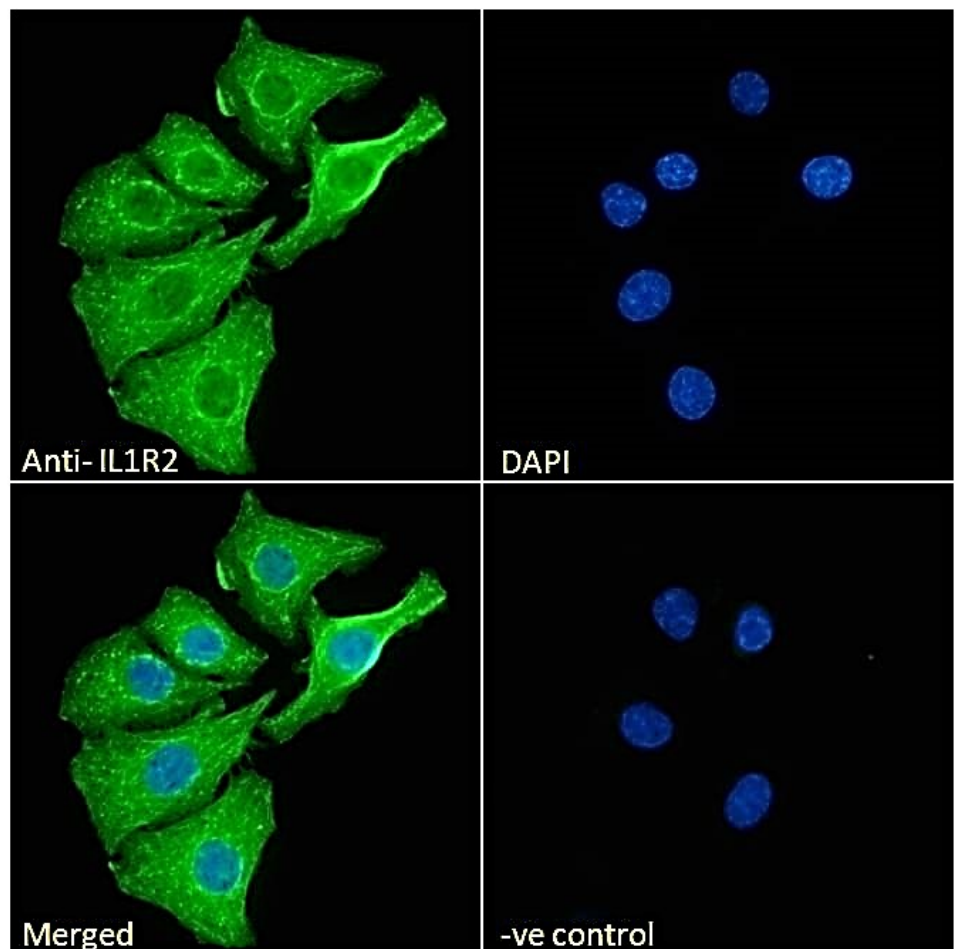
### Species Reactivity

**Tested:** Human

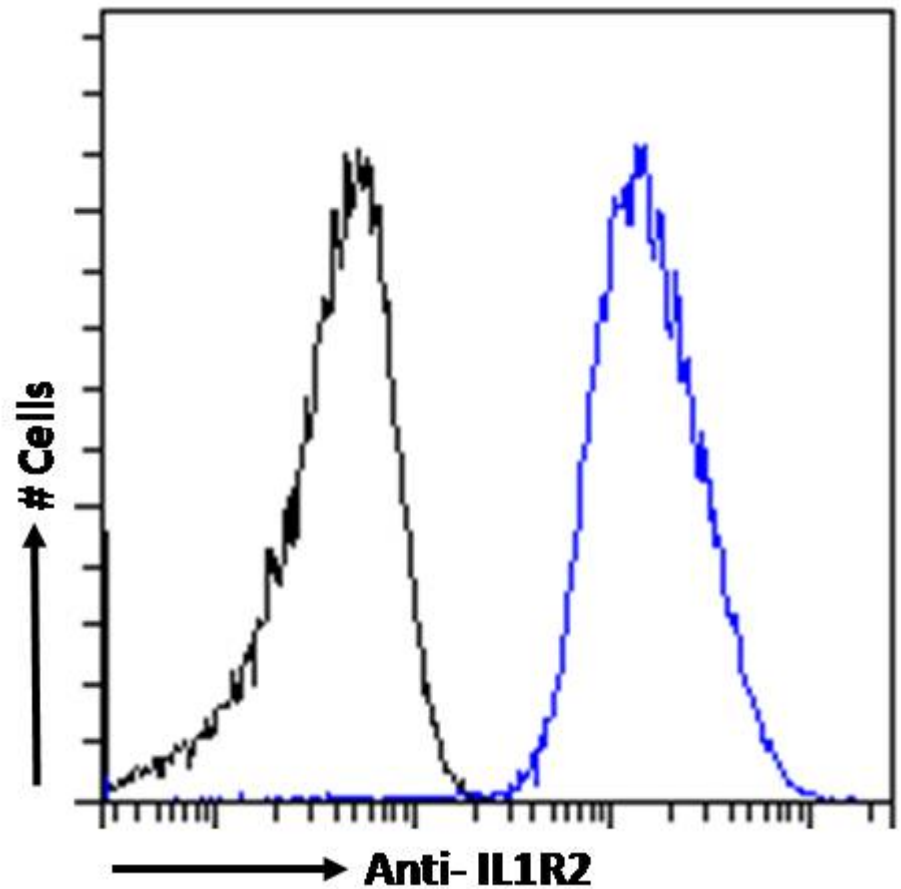
**Expected from sequence similarity:** Human



EB10107 (0.5 $\mu$ g/ml) staining of LNCaP (A) and (1 $\mu$ g/ml) MOLT-4 (B) cell- lysate (35 $\mu$ g protein in RIPA buffer).  
Detected by chemiluminescence.



EB10107 Immunofluorescence analysis of paraformaldehyde fixed A549 cells, permeabilized with 0.15% Triton. Primary incubation 1hr (10ug/ml) followed by Alexa Fluor 488 secondary antibody (2ug/ml), showing membrane and cytoplasmic staining. The nuclear stain is DAPI (blue). Negative control: Unimmunized goat IgG (10ug/ml) followed by Alexa Fluor 488 secondary antibody (2ug/ml).



EB10107 Flow cytometric analysis of paraformaldehyde fixed A549 cells (blue line), permeabilized with 0.5% Triton. Primary incubation 1hr (10ug/ml) followed by Alexa Fluor 488 secondary antibody (1ug/ml). IgG control: Unimmunized goat IgG (black line) followed by Alexa Fluor 488 secondary antibody.