



UK Office

Everest Biotech Ltd

Cherwell Innovation Centre
77 Heyford Park
Upper Heyford
Oxfordshire
OX25 5HD
UK

Enquiries:

info@everestbiotech.com

Sales:

sales@everestbiotech.com

Tech support:

support@everestbiotech.com

Tel: +44 (0)1869 238326

Fax: +44 (0)1869 238327

US Office

Everest Biotech c/o Abcore

405 Maple Street, Suite A106
Ramona,
CA 92065
USA

Inquiries:

info@everestbiotech.com

Sales:

usasales@everestbiotech.com

Tech support:

support@everestbiotech.com

Tel: 888-320-4628 (toll-free)

Fax: 888-841-9041

www.everestbiotech.com

**Research Use Only. Not for
diagnostic or therapeutic use.**

EB09502 - Goat Anti-ILF3 Antibody

Size: 100µg specific antibody in 200µl



Target Protein

Principal Names: ILF3, interleukin enhancer binding factor 3, 90kDa, DRBF, MMP4, MPHOSPH4, MPP4, NF-AT-90, NF90, NFAR, TCP80, M-phase phosphoprotein 4, dsRNA binding protein NFAR-2/MPP4, interleukin enhancer binding factor 3, nuclear factor associated with dsRNA, nuclear factor of activated T-cells, 90 kD, translational control protein 80

Official Symbol: ILF3

Accession Number(s): NP_036350.2; NP_060090.2

Human GeneID(s): [3609](#)

Important Comments: This antibody is expected to recognize isoforms a (NP_036350.2) and d (NP_060090.2).

Immunogen

Peptide with sequence C-QKPSYGSYGQSHQGQ, from the internal region of the protein sequence according to NP_036350.2; NP_060090.2.

Please note the [peptide](#) is available for sale.

Purification and Storage

Purified from goat serum by ammonium sulphate precipitation followed by antigen affinity chromatography using the immunizing peptide.

Supplied at 0.5 mg/ml in Tris saline, 0.02% sodium azide, pH7.3 with 0.5% bovine serum albumin.

Aliquot and store at -20°C. Minimize freezing and thawing.

Applications Tested

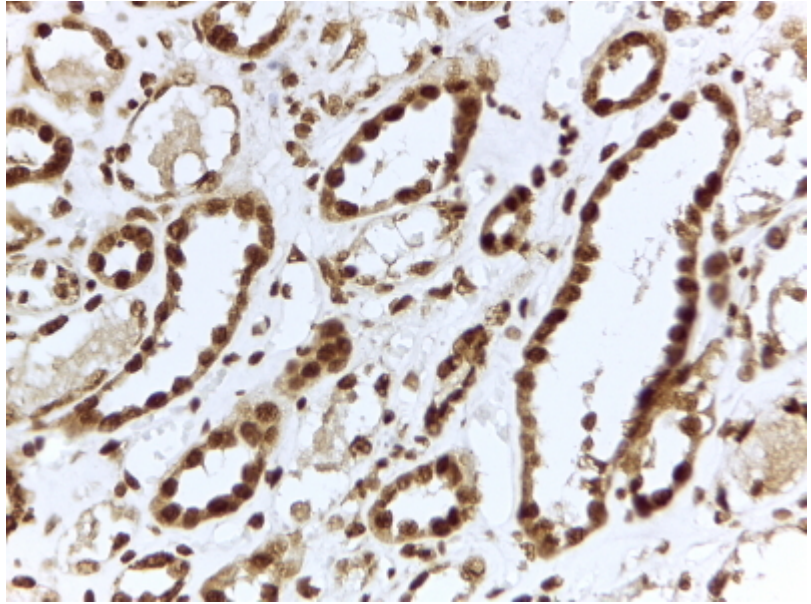
Peptide ELISA: antibody detection limit dilution 1:32000.

IHC: In paraffin embedded Human Kidney shows nuclear staining in convoluted tubules. Recommended concentration, 2-4µg/ml.

Species Reactivity

Tested: Human

Expected from sequence similarity: Human, Rat, Dog, Cow



EB09502 (2 μ g/ml) staining of paraffin embedded Human Kidney. Steamed antigen retrieval with citrate buffer pH 6, HRP-staining.