



UK Office

Everest Biotech Ltd

Cherwell Innovation Centre
77 Heyford Park
Upper Heyford
Oxfordshire
OX25 5HD
UK

Enquiries:

info@everestbiotech.com

Sales:

sales@everestbiotech.com

Tech support:

support@everestbiotech.com

Tel: +44 (0)1869 238326

Fax: +44 (0)1869 238327

US Office

Everest Biotech c/o Abcore

405 Maple Street, Suite A106
Ramona,
CA 92065
USA

Inquiries:

info@everestbiotech.com

Sales:

usasales@everestbiotech.com

Tech support:

support@everestbiotech.com

Tel: 888-320-4628 (toll-free)

Fax: 888-841-9041

www.everestbiotech.com

**Research Use Only. Not for
diagnostic or therapeutic use.**

EB10163 - Goat Anti-IMP3 Antibody

Size: 100µg specific antibody in 200µl



Target Protein

Principal Names: BRMS2, C15orf12, DKFZp586L0118, FLJ10968, IMP3, U3 small nucleolar ribonucleoprotein, IMP3, U3 small nucleolar ribonucleoprotein, homolog (yeast), MRPS4, OTTHUMP00000183524, U3 snoRNP protein 3 homolog, IMP3

Official Symbol: IMP3

Accession Number(s): NP_060755.1

Human GeneID(s): [55272](#)

Non-Human GeneID(s): 102462 (mouse), 315697 (rat)

Immunogen

Peptide with sequence C-QRREDYTRYNQLSR, from the internal region of the protein sequence according to NP_060755.1.

Please note the [peptide](#) is available for sale.

Purification and Storage

Purified from goat serum by ammonium sulphate precipitation followed by antigen affinity chromatography using the immunizing peptide.

Supplied at 0.5 mg/ml in Tris saline, 0.02% sodium azide, pH7.3 with 0.5% bovine serum albumin.

Aliquot and store at -20°C. Minimize freezing and thawing.

Applications Tested

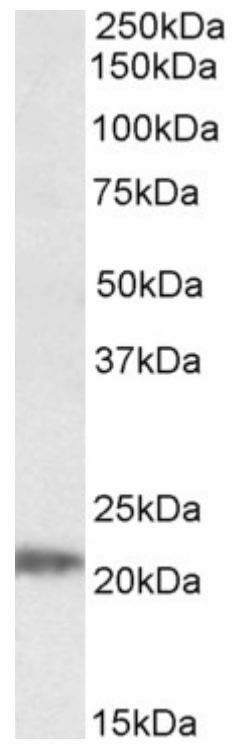
Peptide ELISA: antibody detection limit dilution 1:4000.

Western blot: Approx 22kDa band observed in Human Liver lysates (calculated MW of 21.9kDa according to NP_060755.1). Recommended concentration: 0.05-0.2µg/ml.

Species Reactivity

Tested: Human

Expected from sequence similarity: Human, Mouse, Rat, Pig, Dog, Cow



EB10163 (0.05µg/ml) staining of Human Liver lysate (35µg protein in RIPA buffer). Primary incubation was 1 hour. Detected by chemiluminescence.