



## UK Office

### Everest Biotech Ltd

Cherwell Innovation Centre  
77 Heyford Park  
Upper Heyford  
Oxfordshire  
OX25 5HD  
UK

Enquiries:

[info@everestbiotech.com](mailto:info@everestbiotech.com)

Sales:

[sales@everestbiotech.com](mailto:sales@everestbiotech.com)

Tech support:

[support@everestbiotech.com](mailto:support@everestbiotech.com)

Tel: +44 (0)1869 238326

[www.everestbiotech.com](http://www.everestbiotech.com)

**Research Use Only. Not for  
diagnostic or therapeutic use.**

## EB09548 - Goat Anti-INDOL1 Antibody

Size: 100µg specific antibody in 200µl



### Target Protein

**Principal Names:** IDO2, indoleamine 2,3-dioxygenase 2, INDOL1, indoleamine 2,3-dioxygenase-like 1 protein, indoleamine-pyrrole 2,3 dioxygenase-like 1

**Official Symbol:** IDO2

**Accession Number(s):** NP\_919270.3; NP\_001382135.1

**Human GeneID(s):** [169355](#)

### Immunogen

Peptide with sequence C-RDKTLESILHPR, from the C Terminus of the protein sequence according to NP\_919270.3; NP\_001382135.1.

Please note the [peptide](#) is available for sale.

### Purification and Storage

Purified from goat serum by ammonium sulphate precipitation followed by antigen affinity chromatography using the immunizing peptide.

Supplied at 0.5 mg/ml in Tris saline, 0.02% sodium azide, pH7.3 with 0.5% bovine serum albumin.

Aliquot and store at -20°C. Minimize freezing and thawing.

### Applications Tested

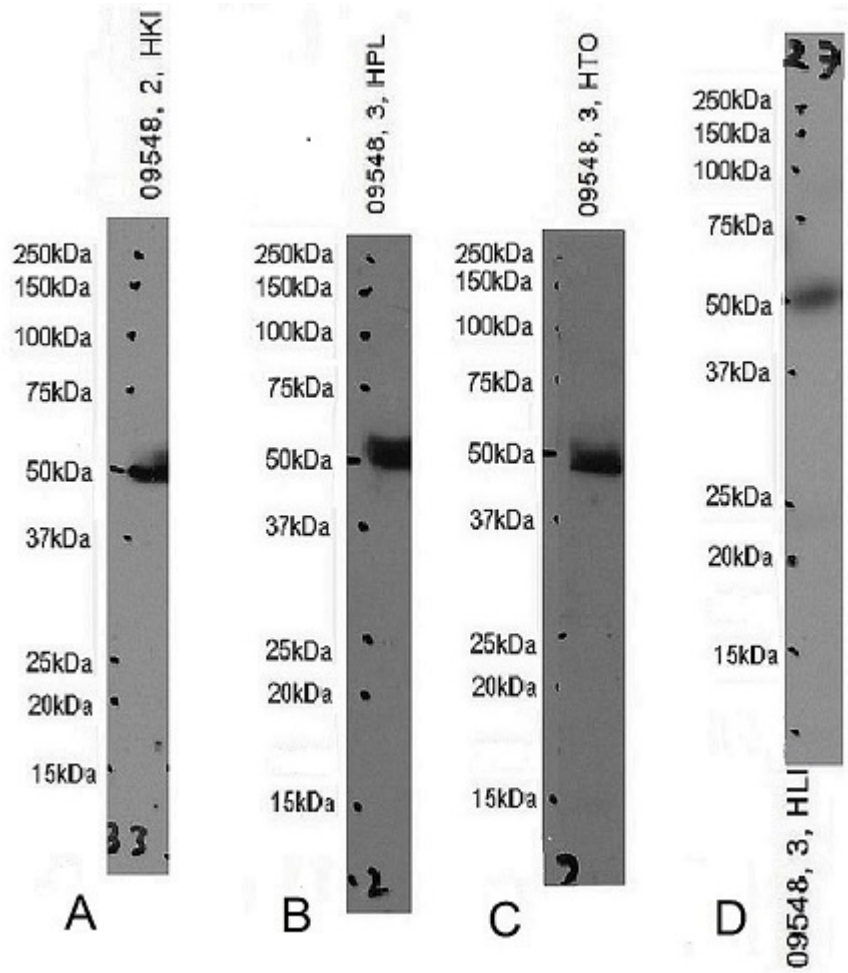
**Peptide ELISA:** antibody detection limit dilution 1:64000.

**Western blot:** Approx. 50kDa band observed in Human Kidney, Liver, Placenta and Tonsil lysates (calculated MW of 47.07kDa according to NP\_919270.3). Recommended concentration: 1-3µg/ml. Primary incubation 1 hour at room temperature.

### Species Reactivity

**Tested:** Human

**Expected from sequence similarity:** Human, Dog, Cow



EB09548 optimised QC. Primary incubation 1 hour at room temperature.  
 Image A: Human Kidney lysate at primary Ab concentration 2µg/ml, Images B, C, and D: Human Placenta, Tonsil and Liver lysate at primary Ab concentration 3µg/ml. (Loaded 35µg protein in RIPA buffer, per lane). Detected by chemiluminescence.