



UK Office

Everest Biotech Ltd

Cherwell Innovation Centre
77 Heyford Park
Upper Heyford
Oxfordshire
OX25 5HD
UK

Enquiries:

info@everestbiotech.com

Sales:

sales@everestbiotech.com

Tech support:

support@everestbiotech.com

Tel: +44 (0)1869 238326

Fax: +44 (0)1869 238327

US Office

Everest Biotech c/o Abcore

405 Maple Street, Suite A106
Ramona,
CA 92065
USA

Inquiries:

info@everestbiotech.com

Sales:

usasales@everestbiotech.com

Tech support:

support@everestbiotech.com

Tel: 888-320-4628 (toll-free)

Fax: 888-841-9041

www.everestbiotech.com

**Research Use Only. Not for
diagnostic or therapeutic use.**

EB07898 - Goat Anti-Insulysin / Insulinase Antibody

Size: 100µg specific antibody in 200µl



Target Protein

Principal Names: insulinase, insulysin, insulin-degrading enzyme, FLJ35968, INSULYSIN, IDE

Official Symbol: IDE

Accession Number(s): NP_004960.2; NP_001159418.1; NP_001309722.1;
NP_001309723.1; NP_001309724.1; NP_001309726.1

Human GeneID(s): [3416](#)

Important Comments: This antibody is expected to recognize all reported isoforms (NP_004960.2; NP_001159418.1; NP_001309722.1; NP_001309723.1; NP_001309724.1; NP_001309726.1). Reported variants represent identical protein: NP_001309725.1, NP_001309724.1

Immunogen

Peptide with sequence C-QQYNFDRDNT, from the internal region of the protein sequence according to NP_004960.2; NP_001159418.1; NP_001309722.1; NP_001309723.1; NP_001309724.1; NP_001309726.1.

Please note the [peptide](#) is available for sale.

Purification and Storage

Purified from goat serum by ammonium sulphate precipitation followed by antigen affinity chromatography using the immunizing peptide.

Supplied at 0.5 mg/ml in Tris saline, 0.02% sodium azide, pH7.3 with 0.5% bovine serum albumin.

Aliquot and store at -20°C. Minimize freezing and thawing.

Applications Tested

Peptide ELISA: antibody detection limit dilution 1:32000.

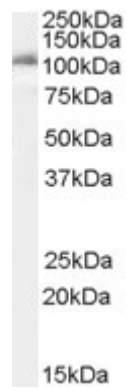
Western blot: Approx 110-120kDa band observed in lysates of cell line K562 (calculated MW of 118kDa according to NP_004960.1). Recommended concentration: 0.1-0.3µg/ml. Primary incubation was 1 hour.

IHC: Paraffin embedded Human Lung and Breast. Recommended concentration: 2.5µg/ml.

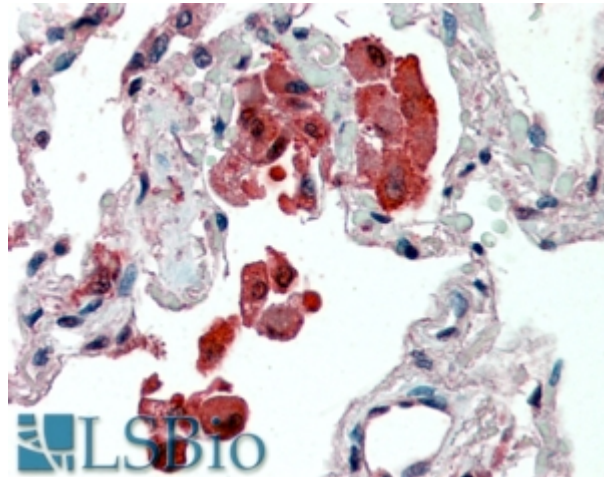
Species Reactivity

Tested: Human

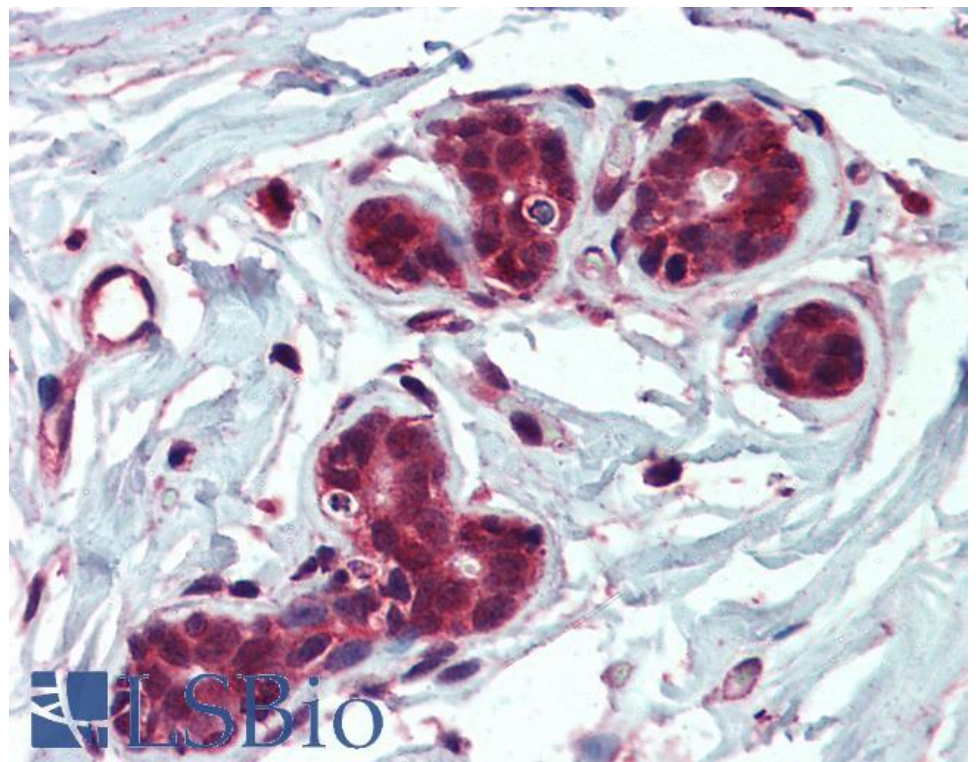
Expected from sequence similarity: Human, Dog



EB07898 (0.1µg/ml) staining of K562 cell lysate (35µg protein in RIPA buffer). Detected by chemiluminescence.



EB07898 (2.5µg/ml) staining of paraffin embedded Human Lung. Steamed antigen retrieval with citrate buffer pH 6, AP-staining.



EB07898 (2.5µg/ml) staining of paraffin embedded Human Breast. Steamed antigen retrieval with citrate buffer pH 6, AP-staining.