



UK Office

Everest Biotech Ltd

Cherwell Innovation Centre
77 Heyford Park
Upper Heyford
Oxfordshire
OX25 5HD
UK

Enquiries:

info@everestbiotech.com

Sales:

sales@everestbiotech.com

Tech support:

support@everestbiotech.com

Tel: +44 (0)1869 238326

Fax: +44 (0)1869 238327

US Office

Everest Biotech c/o Abcore

405 Maple Street, Suite A106
Ramona,
CA 92065
USA

Inquiries:

info@everestbiotech.com

Sales:

usasales@everestbiotech.com

Tech support:

support@everestbiotech.com

Tel: 888-320-4628 (toll-free)

Fax: 888-841-9041

www.everestbiotech.com

**Research Use Only. Not for
diagnostic or therapeutic use.**

EB06651 - Goat Anti-Integrin beta 5 Antibody

Size: 100µg specific antibody in 200µl



Target Protein

Principal Names: ITGB5, integrin, beta 5, FLJ26658

Official Symbol: ITGB5

Accession Number(s): NP_002204.2

Human GeneID(s): [3693](#)

Non-Human GeneID(s): 16419 (mouse)

Immunogen

Peptide with sequence C-TFNKFNKSYNGTVD, from the C Terminus of the protein sequence according to NP_002204.2.

Please note the [peptide](#) is available for sale.

Purification and Storage

Purified from goat serum by ammonium sulphate precipitation followed by antigen affinity chromatography using the immunizing peptide.

Supplied at 0.5 mg/ml in Tris saline, 0.02% sodium azide, pH7.3 with 0.5% bovine serum albumin.

Aliquot and store at -20°C. Minimize freezing and thawing.

Applications Tested

Peptide ELISA: antibody detection limit dilution 1:16000.

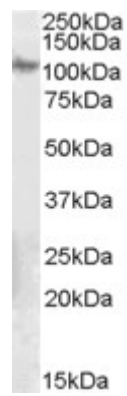
Western blot: Approx 110kDa band observed in Human Ovary and Mouse Eye lysates (calculated MW of 88.1kDa according to NP_002204.2). Recommended concentration: 0.1-0.3µg/ml.

Customer feedback: observed 110kDa in Mouse Eye was confirmed and not present in knock-out mouse.

Species Reactivity

Tested: Human, Mouse

Expected from sequence similarity: Human, Mouse, Rat, Dog, Pig, Cow



EB06651 (0.1µg/ml) staining of Human Ovary lysate (35µg protein in RIPA buffer). Primary incubation was 1 hour. Detected by chemiluminescence.