

UK Office

Everest Biotech Ltd

Cherwell Innovation Centre
77 Heyford Park
Upper Heyford
Oxfordshire
OX25 5HD
UK

Enquiries:

info@everestbiotech.com

Sales:

sales@everestbiotech.com

Tech support:

support@everestbiotech.com

Tel: +44 (0)1869 238326

www.everestbiotech.com

**Research Use Only. Not for
diagnostic or therapeutic use.**

EB12694 - Goat Anti-IP6K3 Antibody

Size: 100µg specific antibody in 200µl



Target Protein

Principal Names: IP6K3, inositol hexakisphosphate kinase 3, IHPK3, INSP6K3, ATP:1D-myo-inositol-hexakisphosphate phosphotransferase, InsP6 kinase 3, inositol hexaphosphate kinase 3

Official Symbol: IP6K3

Accession Number(s): NP_473452.2

Human GeneID(s): [117283](#)

Important Comments: This antibody is expected to recognize. Reported variants represent identical protein: NP_001136355.1, NP_473452.2

Immunogen

Peptide with sequence C-KESQEPFKVSTES, from the internal region of the protein sequence according to NP_473452.2.

Please note the [peptide](#) is available for sale.

Purification and Storage

Purified from goat serum by ammonium sulphate precipitation followed by antigen affinity chromatography using the immunizing peptide.

Supplied at 0.5 mg/ml in Tris saline, 0.02% sodium azide, pH7.3 with 0.5% bovine serum albumin.

Aliquot and store at -20°C. Minimize freezing and thawing.

Applications Tested

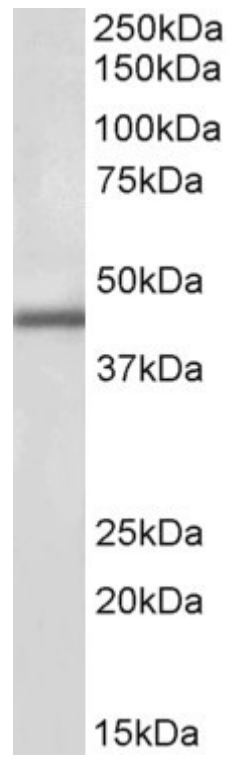
Peptide ELISA: antibody detection limit dilution 1:128000.

Western blot: Approx 45kDa band observed in Human Kidney lysates (calculated MW of 46.4kDa according to NP_473452.2). Recommended concentration: 1-3µg/ml.

Species Reactivity

Tested: Human

Expected from sequence similarity: Human



EB12694 (1 μ g/ml) staining of Human Kidney lysate (35 μ g protein in RIPA buffer). Primary incubation was 1 hour. Detected by chemiluminescence.