



UK Office

Everest Biotech Ltd

Cherwell Innovation Centre
77 Heyford Park
Upper Heyford
Oxfordshire
OX25 5HD
UK

Enquiries:

info@everestbiotech.com

Sales:

sales@everestbiotech.com

Tech support:

support@everestbiotech.com

Tel: +44 (0)1869 238326

www.everestbiotech.com

**Research Use Only. Not for
diagnostic or therapeutic use.**

EB10697 - Goat Anti-IRF2BP1 (aa109-122) Antibody

Size: 100µg specific antibody in 200µl



Target Protein

Principal Names: IRF2BP1, interferon regulatory factor 2 binding protein 1, DKFZp434M154

Official Symbol: IRF2BP1

Accession Number(s): NP_056464.1

Human GeneID(s): [26145](#)

Immunogen

Peptide with sequence C-QDRYDRATSSGRLP, from the internal region of the protein sequence according to NP_056464.1.

Please note the [peptide](#) is available for sale.

Purification and Storage

Purified from goat serum by ammonium sulphate precipitation followed by antigen affinity chromatography using the immunizing peptide.

Supplied at 0.5 mg/ml in Tris saline, 0.02% sodium azide, pH7.3 with 0.5% bovine serum albumin.

Aliquot and store at -20°C. Minimize freezing and thawing.

Applications Tested

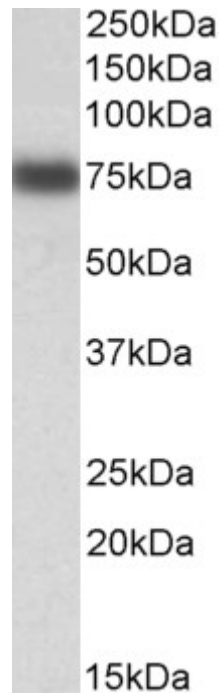
Peptide ELISA: antibody detection limit dilution 1:32000.

Western blot: Approx 75kDa band observed in lysates of cell line HepG2 and 80kDa in nuclear lysates of cell line NIH3T3 (calculated MW of 61.7kDa according to NP_056464.1). Recommended concentration: 0.1-0.3µg/ml.

Species Reactivity

Tested: Human, Mouse

Expected from sequence similarity: Human, Mouse, Rat, Dog



EB10697 (0.1µg/ml) staining of HepG2 lysate (35µg protein in RIPA buffer). Primary incubation was 1 hour. Detected by chemiluminescence.



EB10697 (0.3µg/ml) staining of nuclear NIH3T3 lysate (35µg protein in RIPA buffer). Primary incubation was 1 hour. Detected by chemiluminescence.